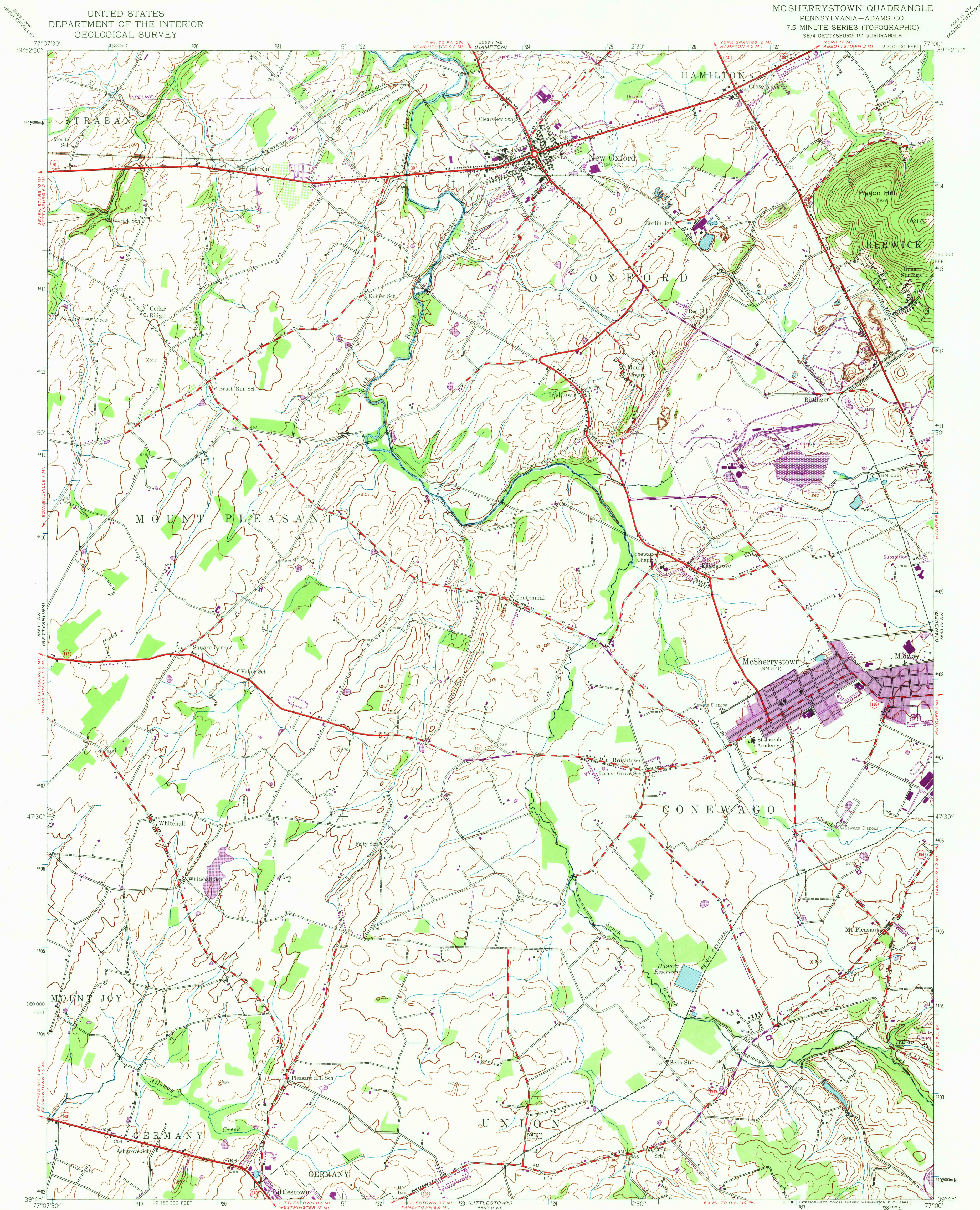
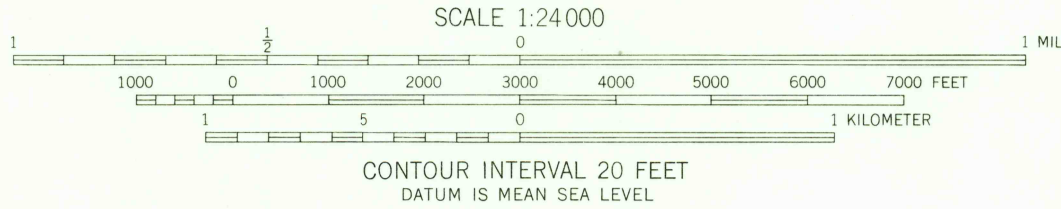
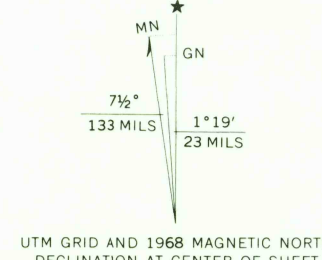


UNITED STATES  
DEPARTMENT OF THE INTERIOR  
GEOLOGICAL SURVEY

MC SHERRYSTOWN QUADRANGLE  
PENNSYLVANIA—ADAMS CO.  
7.5 MINUTE SERIES (TOPOGRAPHIC)  
SE 1/4 GETTYSBURG 15' QUADRANGLE



Map by the Army Map Service  
Published for civil use by the Geological Survey  
Control by USGS, USC&GS, and USFS  
Topography from aerial photographs by photogrammetric methods  
Aerial photographs taken 1943. Field check 1944  
Polyconic projection. 1927 North American datum  
10,000-foot grid based on Pennsylvania coordinate system, south zone  
1000-meter Universal Transverse Mercator grid ticks,  
zone 18, shown in blue  
Revisions shown in purple compiled by Geological Survey in  
cooperation with State of Pennsylvania agencies, from aerial  
photographs taken 1968. This information not field checked  
Purple tint indicates urban areas



U.S.G.S.  
TOPOGRAPHIC DIVISION  
FILE COPY

MC SHERRYSTOWN, PA.  
SE 1/4 GETTYSBURG 15' QUADRANGLE  
N3945-W7700/7.5  
1944  
PHOTOREVISED 1968  
AMS 5563 1 SE—SERIES V831

2475  
MAY 2 6 1969