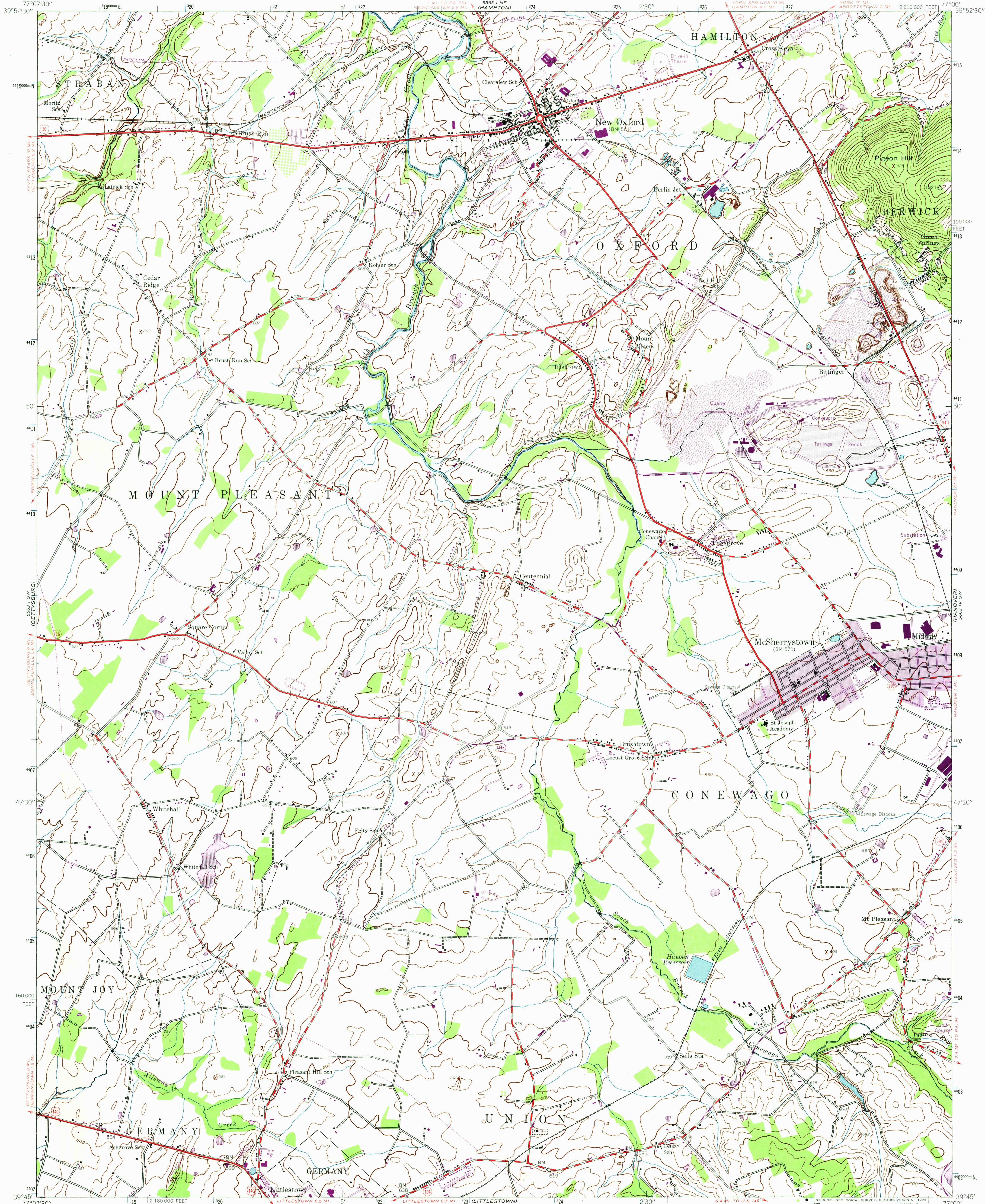
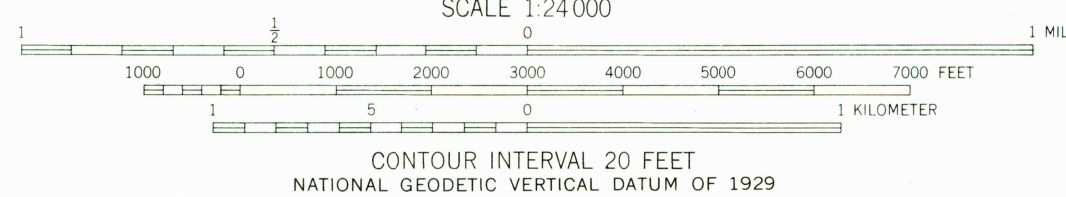
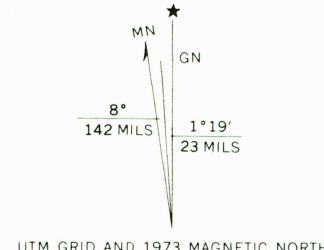


UNITED STATES
DEPARTMENT OF THE INTERIOR
GEOLOGICAL SURVEY

MC SHERRYSTOWN QUADRANGLE
PENNSYLVANIA—ADAMS CO.
7.5 MINUTE SERIES (TOPOGRAPHIC)
SE/4 GETTYSBURG 15' QUADRANGLE



Mapped by the Army Map Service
Published for civil use by the Geological Survey
Control by USGS, USC&GS, and USFS
Topography from aerial photographs by photogrammetric methods
Aerial photographs taken 1943. Field check 1944
Polyconic projection. 1927 North American datum
10,000-foot grid based on Pennsylvania coordinate system, south zone
1000-meter Universal Transverse Mercator grid ticks,
zone 18, shown in blue
Revisions shown in purple compiled by the Geological Survey in
cooperation with State of Pennsylvania agencies from aerial
photographs taken 1968 and 1973. This information not field checked



ROAD CLASSIFICATION	
Heavy-duty	Light-duty
Medium-duty	Unimproved dirt
U.S. Route	State Route

USGS
Historical File
Topographic Division

MC SHERRYSTOWN, PA.
SE/4 GETTYSBURG 15' QUADRANGLE
N3945-W7700/7.5
1944
PHOTOREVISED 1968 AND 1973
AMS 5563 I SE—SERIES V831

THIS MAP COMPLIES WITH NATIONAL MAP ACCURACY STANDARDS
FOR SALE BY U.S. GEOLOGICAL SURVEY, RESTON, VIRGINIA 22092
A FOLDER DESCRIBING TOPOGRAPHIC MAPS AND SYMBOLS IS AVAILABLE ON REQUEST

JAN 24 1975
2700