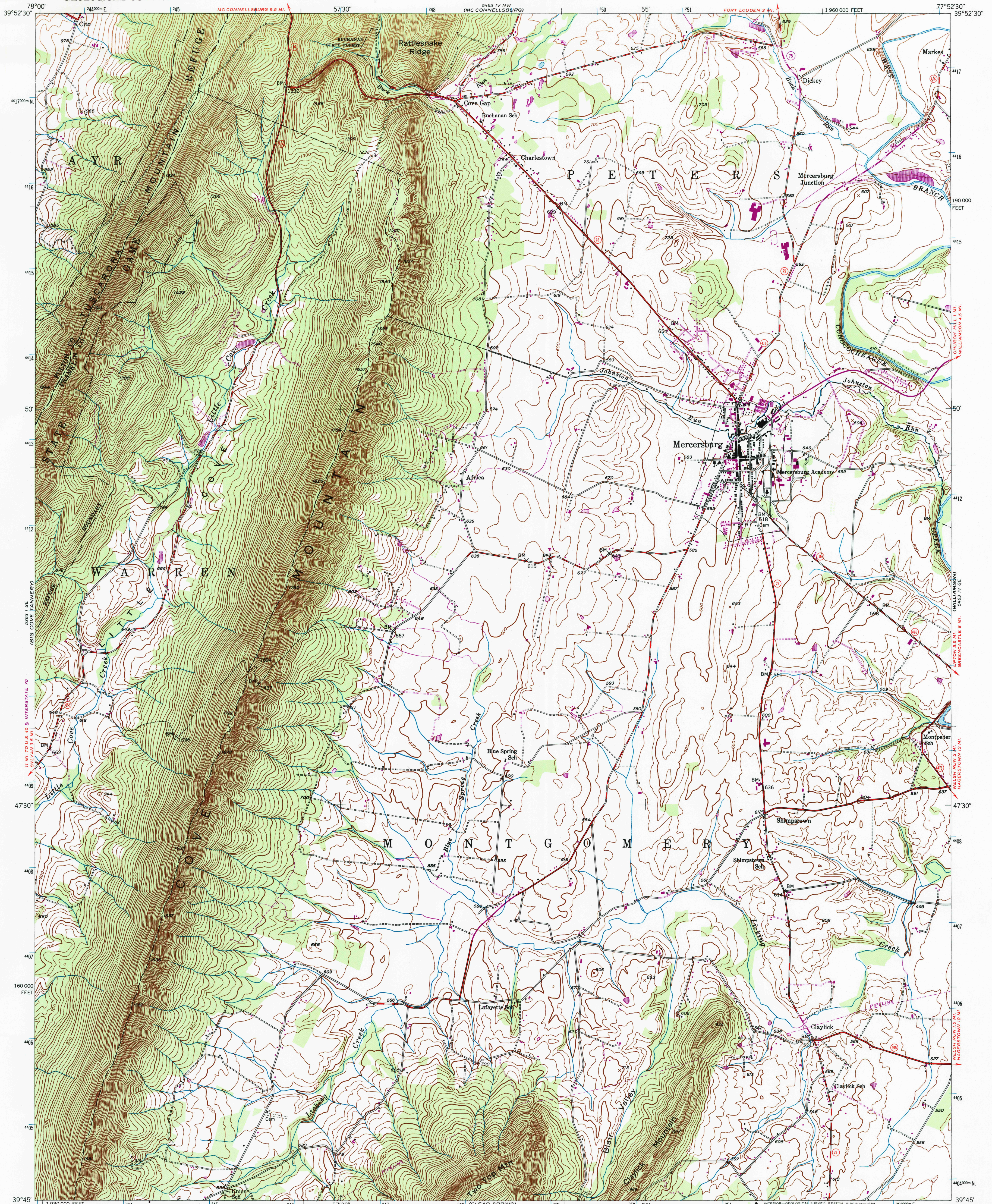
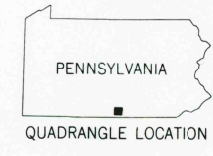
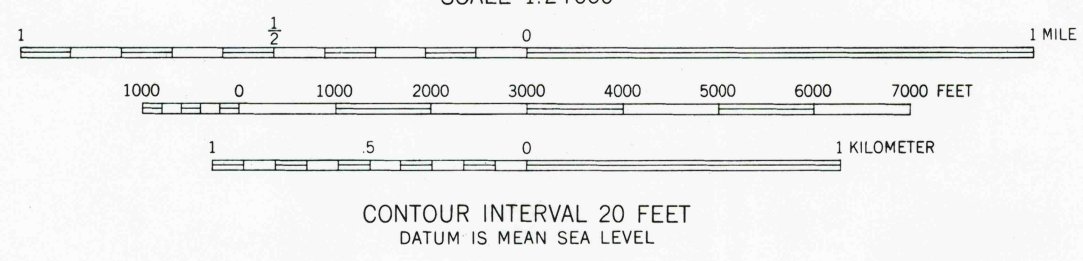
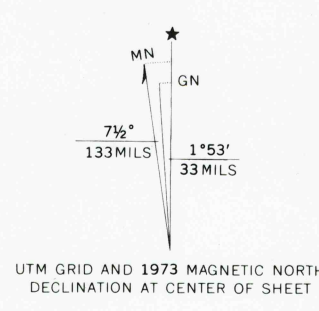


UNITED STATES
DEPARTMENT OF THE INTERIOR
GEOLOGICAL SURVEY

MERCERSBURG QUADRANGLE
PENNSYLVANIA
7.5 MINUTE SERIES (TOPOGRAPHIC)



Mapped by the Army Map Service
Published for civil use by the Geological Survey
Control by USGS, USC&GS, and USFS
Topography from aerial photographs by KEK plotter
Aerial photographs taken 1943. Field check 1943
Polyconic projection. 1927 North American datum
10,000-foot grid based on Pennsylvania coordinate system,
south zone
No distinction is made between dwellings, barns,
commercial and industrial buildings
1000-meter Universal Transverse Mercator grid ticks,
zone 18, shown in blue
Revisions shown in purple compiled by the Geological Survey in
cooperation with State of Pennsylvania agencies, from aerial
photographs taken 1968 and 1973. This information not field checked



ROAD CLASSIFICATION			
Heavy-duty	Light-duty	Unimproved dirt	
Medium-duty			
U.S. Route	State Route		

MERCERSBURG, PA.

N3945-W7752.5/7.5
1943

PHOTOREVISED 1968 AND 1973
AMS 5463 IV SW-SERIES V831

THIS MAP COMPLIES WITH NATIONAL MAP ACCURACY STANDARDS
FOR SALE BY U. S. GEOLOGICAL SURVEY, RESTON, VIRGINIA 22092
A FOLDER DESCRIBING TOPOGRAPHIC MAPS AND SYMBOLS IS AVAILABLE ON REQUEST

RETURN TO:
USGS NHD HISTORICAL MAP ARCHIVES