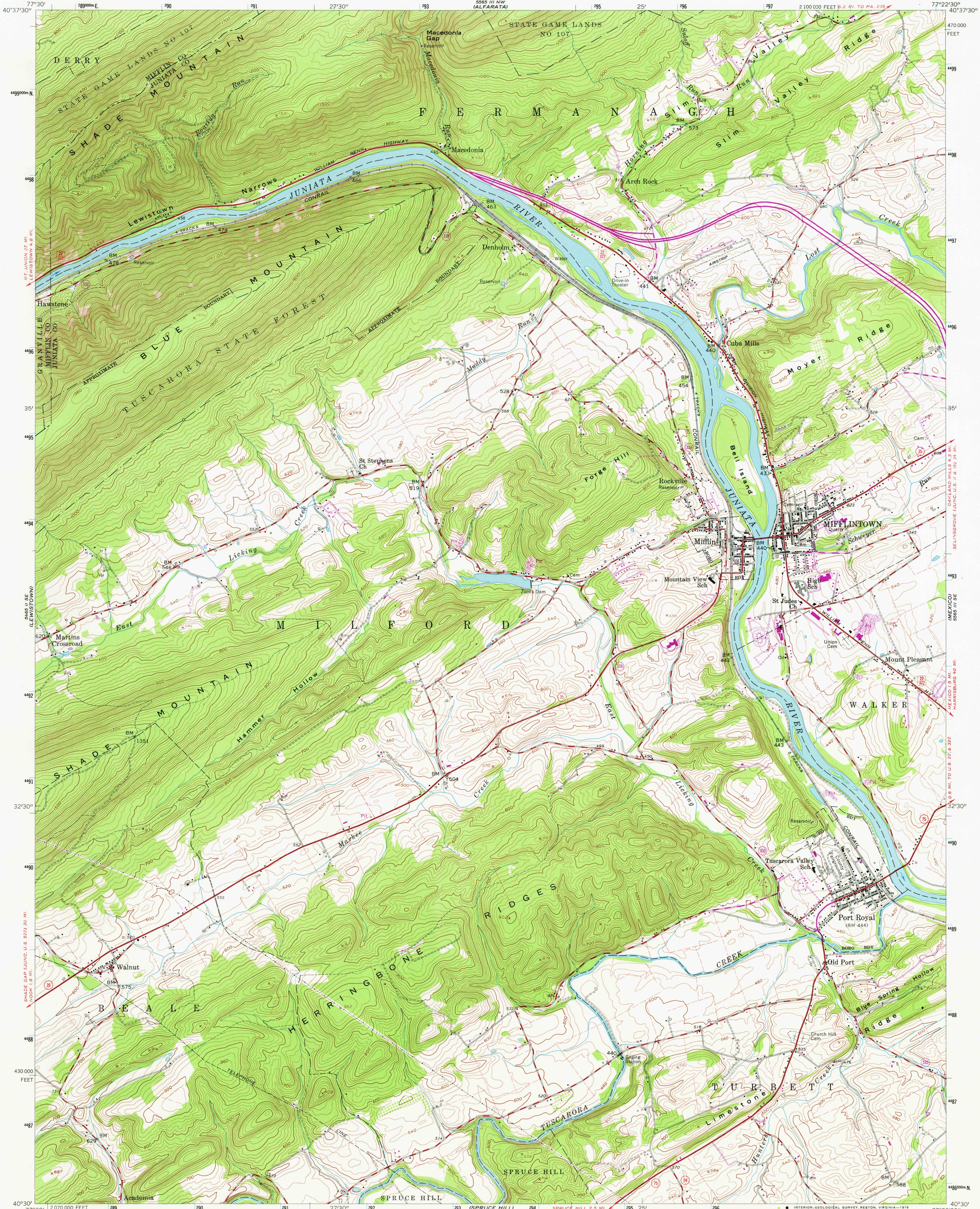
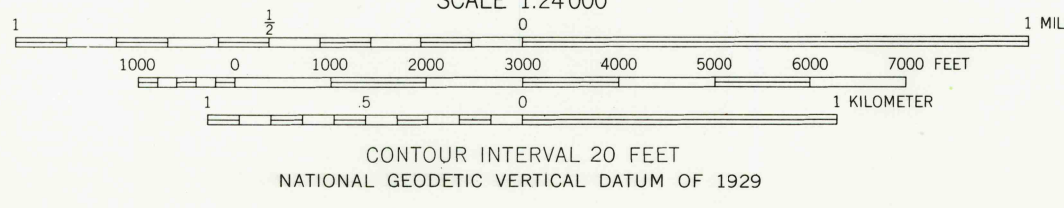
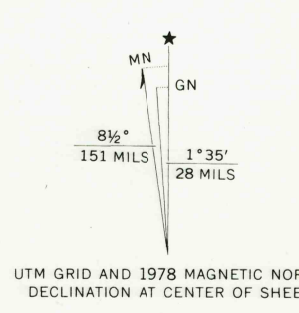


UNITED STATES
DEPARTMENT OF THE INTERIOR
GEOLOGICAL SURVEY

MIFFLINTOWN QUADRANGLE
PENNSYLVANIA
7.5 MINUTE SERIES (TOPOGRAPHIC)
SW 1/4 MIFFLINTOWN 15' QUADRANGLE



Mapped, edited, and published by the Geological Survey
Control by USGS and USC&GS
Topography from aerial photographs by photogrammetric methods
Aerial photographs taken 1958. Field check 1959
Polyconic projection, 1927 North American datum
10,000-foot grid based on Pennsylvania coordinate system,
south zone
1000-meter Universal Transverse Mercator grid ticks,
zone 18, shown in blue
Fine red dashed lines indicate selected fence and field lines
visible on aerial photographs. This information is unchecked
There may be private inholdings within the boundaries of
the National or State reservations shown on this map



THIS MAP COMPLIES WITH NATIONAL MAP ACCURACY STANDARDS
FOR SALE BY U. S. GEOLOGICAL SURVEY, RESTON, VIRGINIA 22092
A FOLDER DESCRIBING TOPOGRAPHIC MAPS AND SYMBOLS IS AVAILABLE ON REQUEST

Revisions shown in purple compiled in cooperation with State of
Pennsylvania agencies from aerial photographs taken 1977 and
other source data. This information not field checked.
Map edited 1978

ROAD CLASSIFICATION
Heavy-duty ——— Light-duty ———
Medium-duty ——— Unimproved dirt ———
U. S. Route ——— State Route ———



USGS
Historical File
Topographic Division

MIFFLINTOWN, PA.
SW 1/4 MIFFLINTOWN 15' QUADRANGLE
N 4030—W 7722.5/7.5

1959
PHOTOGRAPHED 1978
AMS 5565 III SW-SERIES V851

MAR 14 1979
3200