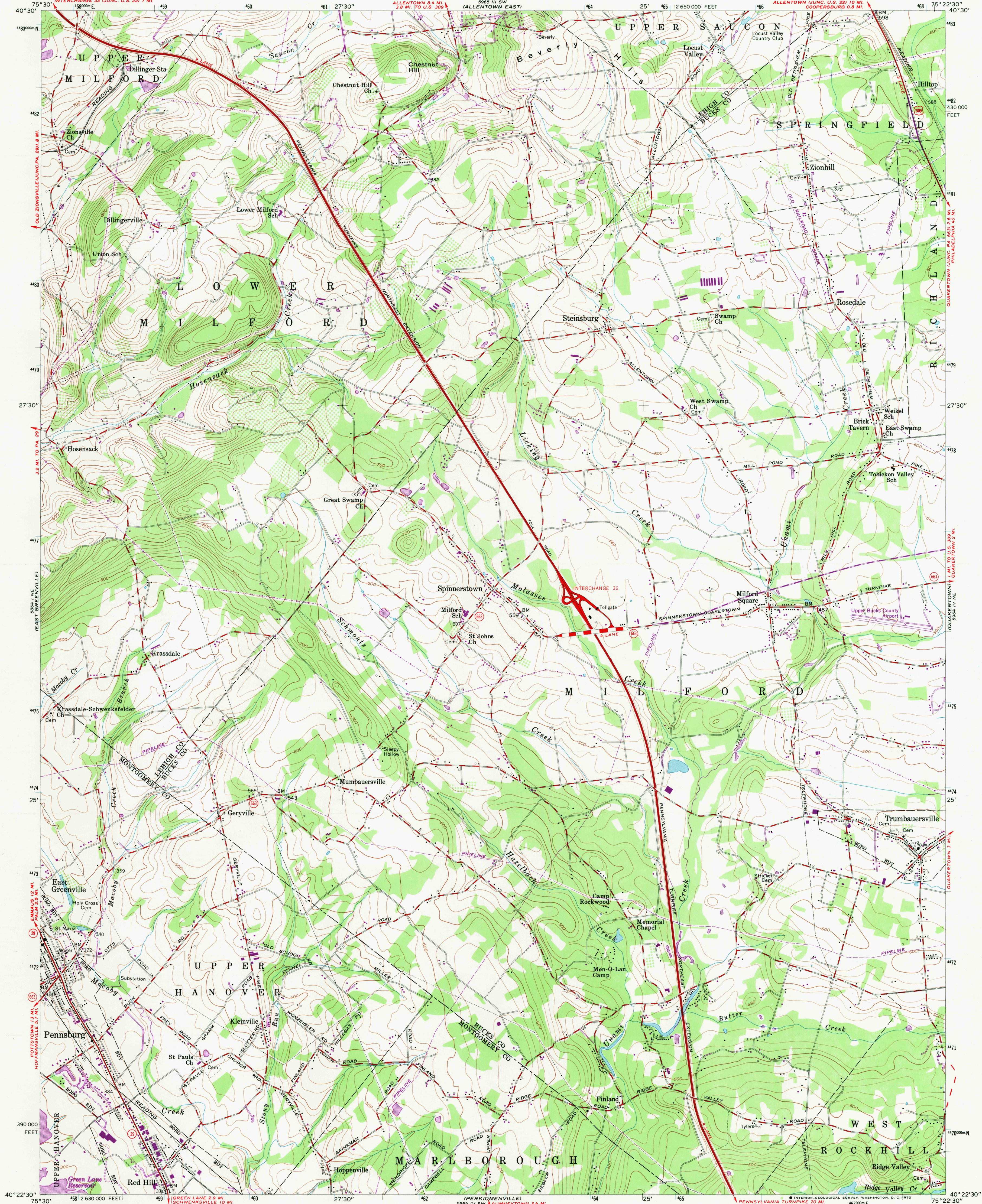


UNITED STATES  
DEPARTMENT OF THE INTERIOR  
GEOLOGICAL SURVEY

MILFORD SQUARE QUADRANGLE  
PENNSYLVANIA  
7.5 MINUTE SERIES (TOPOGRAPHIC)



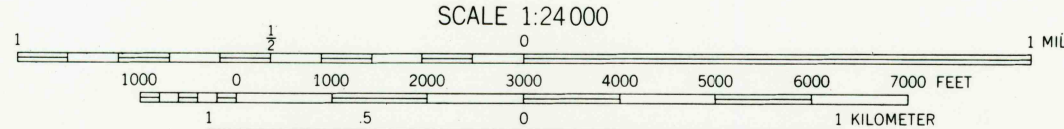
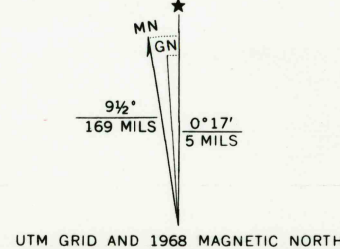
Mapped by the Army Map Service  
Edited and published by the Geological Survey

Control by USGS and USC&GS

Topography from aerial photographs by photogrammetric methods, 1943  
Culture revised by the Geological Survey, 1957

Polyconic projection. 1927 North American datum.  
10,000-foot grid based on Pennsylvania coordinate system,  
south zone.  
1000-meter Universal Transverse Mercator grid ticks,  
zone 18, shown in blue.

Revisions shown in purple compiled by Geological Survey in  
cooperation with State of Pennsylvania agencies, from aerial  
photographs taken 1968. This information not field checked.



CONTOUR INTERVAL 20 FEET  
DATUM IS MEAN SEA LEVEL

THIS MAP COMPLIES WITH NATIONAL MAP ACCURACY STANDARDS  
FOR SALE BY U. S. GEOLOGICAL SURVEY, WASHINGTON, D. C. 20242  
A FOLDER DESCRIBING TOPOGRAPHIC MAPS AND SYMBOLS IS AVAILABLE ON REQUEST

USGS  
Historical File  
Topographic Division

ROAD CLASSIFICATION  
Heavy-duty ——— Light-duty ———  
Medium-duty ——— Unimproved dirt ———  
U. S. Route ——— State Route ———

U.S.G.S.  
FILE COPY  
TOPOGRAPHIC DIVISION

MILFORD SQUARE, PA.  
NW/4 QUAKERTOWN 15' QUADRANGLE  
N4022.5—W7522.5/7.5

1957  
PHOTOREVISED 1968  
AMS 5964 IV NW—SERIES V831

SEP 2 1969