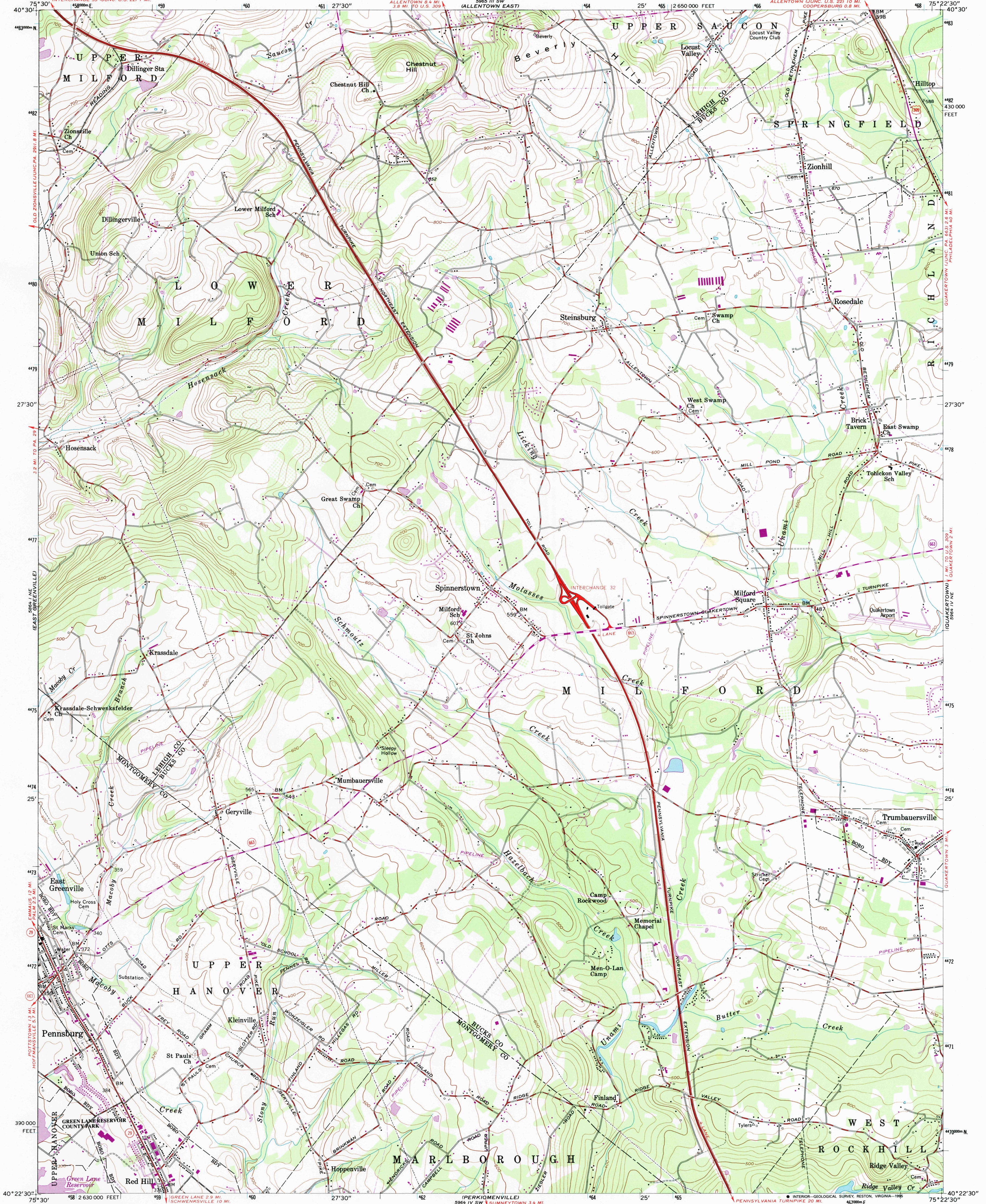
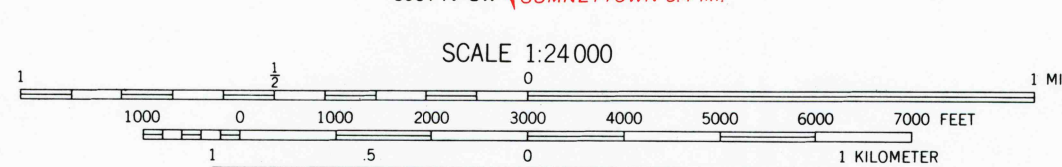
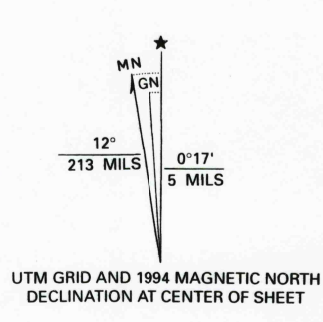


UNITED STATES
DEPARTMENT OF THE INTERIOR
GEOLOGICAL SURVEY

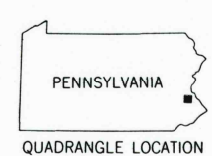
MILFORD SQUARE QUADRANGLE
PENNSYLVANIA
7.5 MINUTE SERIES (TOPOGRAPHIC)



Map by the Army Map Service
Edited and published by the U.S. Geological Survey
Control by USGS and NOS/NOAA
Compiled from imagery dated 1943. Revised from imagery dated 1957. Photospect using imagery dated 1992, no major culture or drainage changes observed. Boundaries and names revised 1994.
North American Datum of 1927 (NAD 27). Projection and 10 000-foot ticks: Pennsylvania coordinate system, south zone (Lambert conformal conic).
Blue 1000-meter Universal Transverse Mercator grid ticks, zone 18.
North American Datum of 1983 (NAD 83) is shown by dashed corner ticks. The values of the shift between NAD 27 and NAD 83 for 7.5-minute intersections are obtainable from National Geodetic Survey NADCON software.
Revisions shown in purple compiled by the Geological Survey in cooperation with State of Pennsylvania agencies from aerial photographs taken 1968 and 1973. This information not field checked.



CONTOUR INTERVAL 20 FEET
NATIONAL GEODETIC VERTICAL DATUM OF 1929
THIS MAP COMPLIES WITH NATIONAL MAP ACCURACY STANDARDS
FOR SALE BY U.S. GEOLOGICAL SURVEY
DENVER, COLORADO 80225, OR RESTON, VIRGINIA 22092
A FOLDER DESCRIBING TOPOGRAPHIC MAPS AND SYMBOLS IS AVAILABLE ON REQUEST



ROAD CLASSIFICATION
Primary highway, hard surface
Secondary highway, hard surface
Unimproved road
Interstate Route
U. S. Route
State Route
Light-duty road, hard or improved surface
Unimproved road
Interstate Route
U. S. Route
State Route

MILFORD SQUARE, PA.
40075-04 TF-024
1992

DMA 5964 IV NW-SERIES V831

