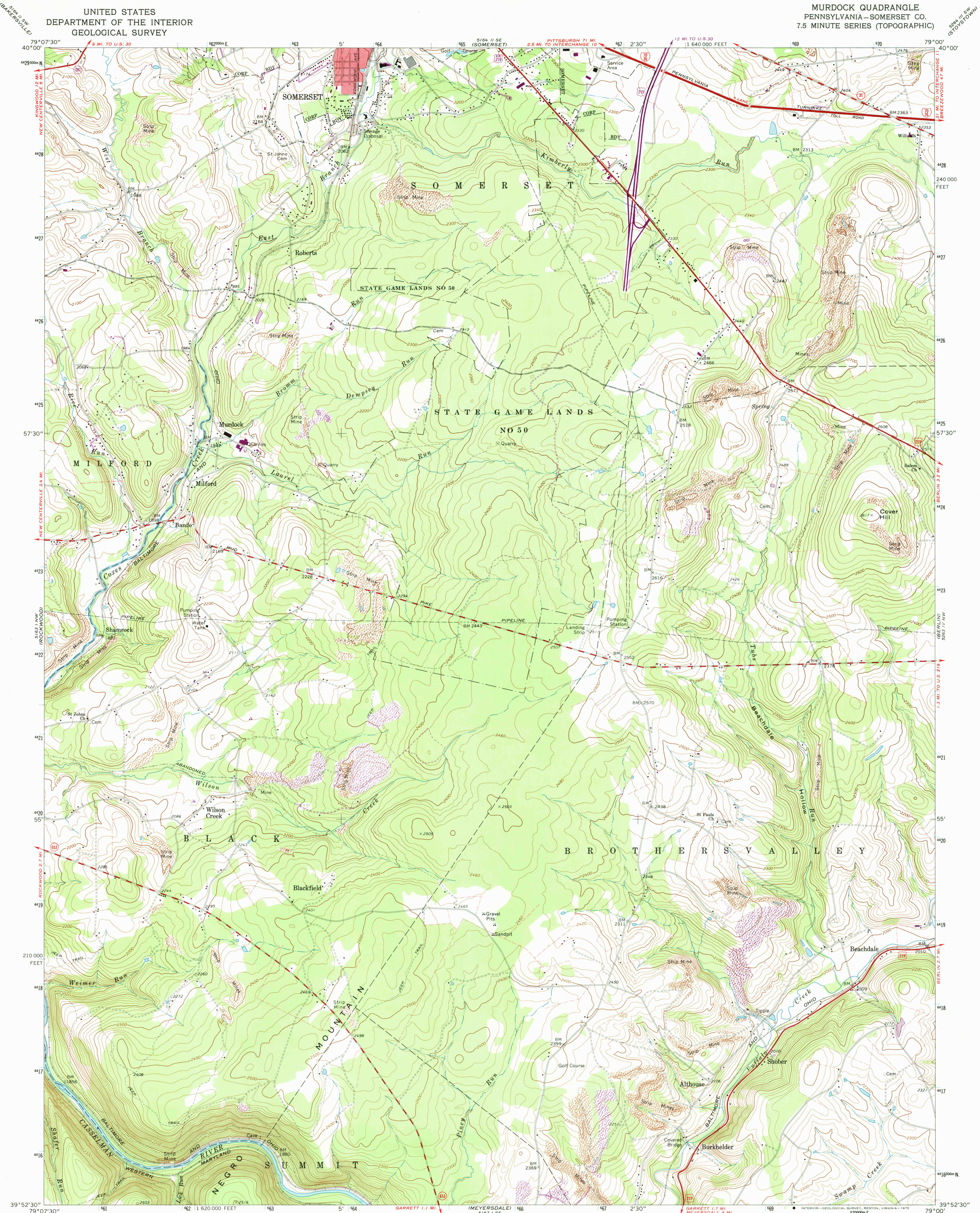


UNITED STATES
DEPARTMENT OF THE INTERIOR
GEOLOGICAL SURVEY

MURDOCK QUADRANGLE
PENNSYLVANIA—SOMERSET CO.
7.5 MINUTE SERIES (TOPOGRAPHIC)



Mapped, edited, and published by the Geological Survey

Control by USGS and USC&GS

Topography by photogrammetric methods from aerial

photographs taken 1966. Field checked 1968

Polyconic projection. 1927 North American datum

10,000-foot grid based on Pennsylvania coordinate system,

south zone

1000-meter Universal Transverse Mercator grid ticks,

zone 17, shown in blue

Fine red dashed lines indicate selected fence and field lines where

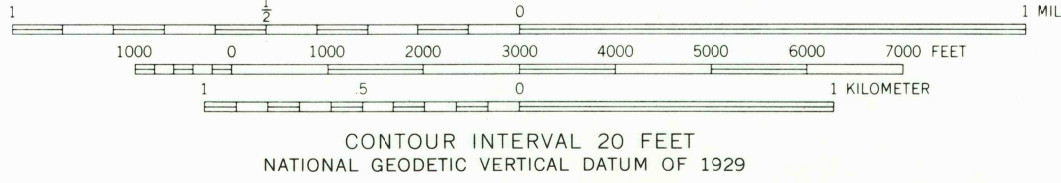
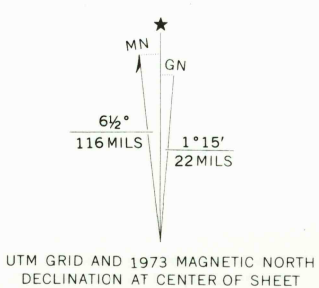
generally visible on aerial photographs. This information is unchecked

Red tint indicates area in which only landmark buildings are shown

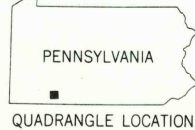
Revisions shown in purple compiled in cooperation with

State of Pennsylvania agencies from aerial photographs

taken 1973. This information not field checked



THIS MAP COMPLIES WITH NATIONAL MAP ACCURACY STANDARDS
FOR SALE BY U.S. GEOLOGICAL SURVEY, RESTON, VIRGINIA 22092
A FOLDER DESCRIBING TOPOGRAPHIC MAPS AND SYMBOLS IS AVAILABLE ON REQUEST



ROAD CLASSIFICATION	
Primary highway, all weather, hard surface	Light-duty road, all weather, improved surface
Secondary highway, all weather, hard surface	Unimproved road, fair or dry weather
Interstate Route	U. S. Route
State Route	

MURDOCK, PA.

N3952.5—W7900/7.5

1968

PHOTOREVISED 1973

AMS 5163 1 NE—SERIES V831

3110
FEB 14 1975