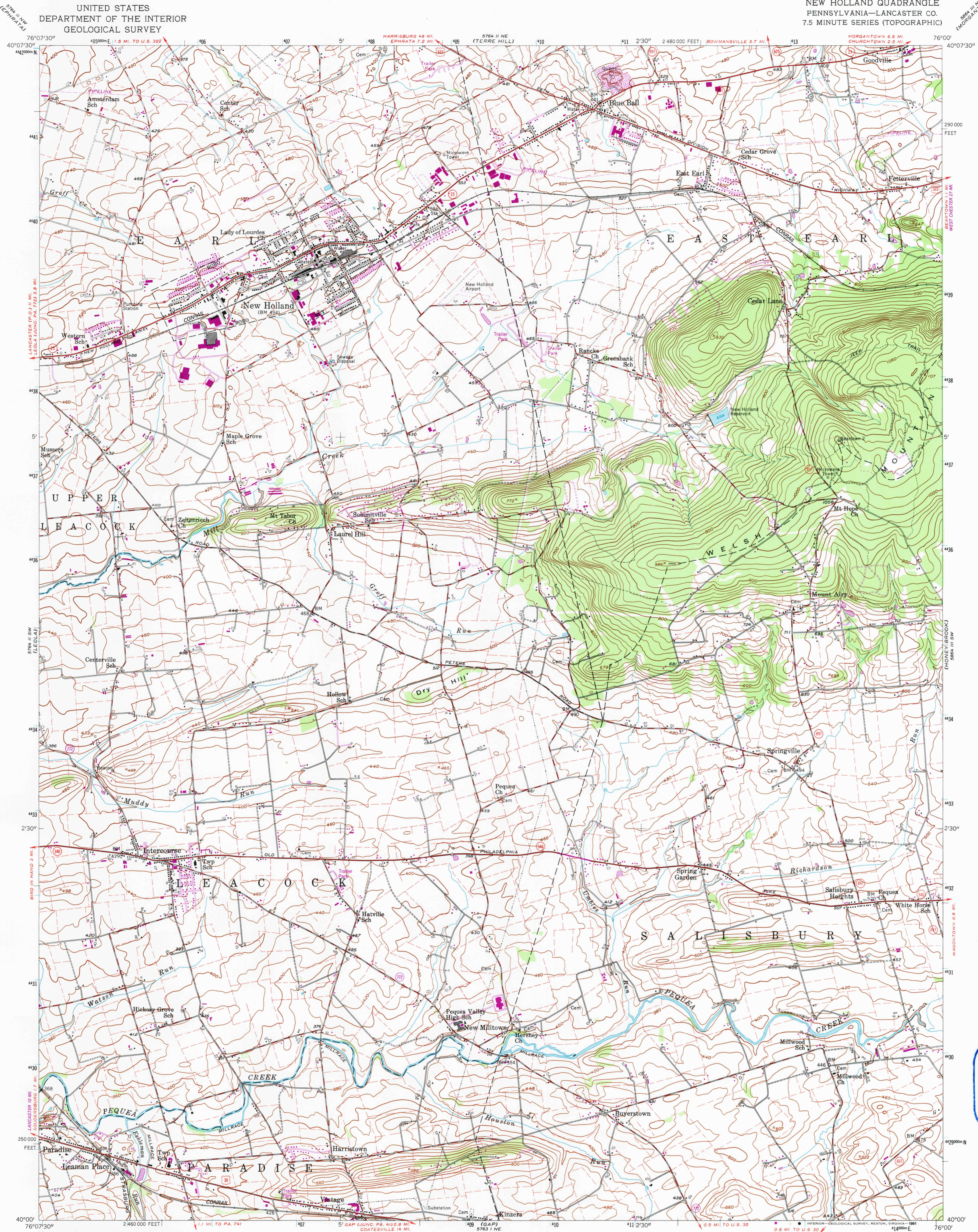
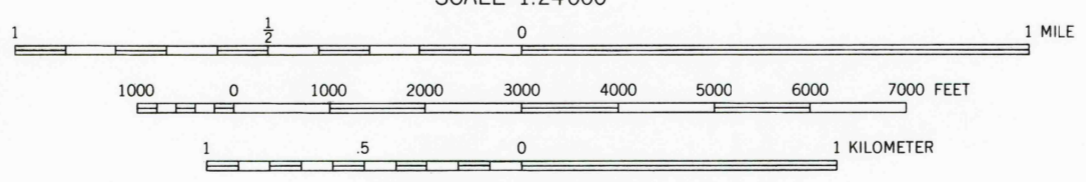
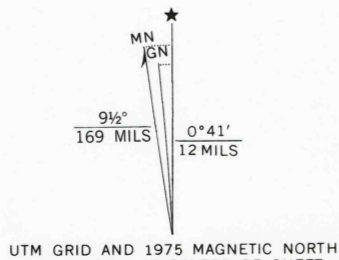


UNITED STATES  
DEPARTMENT OF THE INTERIOR  
GEOLOGICAL SURVEY

NEW HOLLAND QUADRANGLE  
PENNSYLVANIA—LANCASTER CO.  
7.5 MINUTE SERIES (TOPOGRAPHIC)

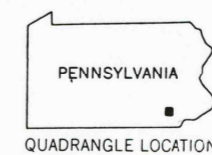


Mapped, edited, and published by the Geological Survey  
Control by USGS, USC&GS, and USSCS  
Topography from aerial photographs by Wild A-5  
Aerial photographs taken 1951. Field check 1956  
Polyconic projection. 1927 North American datum  
10,000-foot grid based on Pennsylvania coordinate system,  
south zone  
1000-meter Universal Transverse Mercator grid ticks,  
zone 18, shown in blue  
Unchecked elevations are shown in brown  
Fine red dashed lines indicate selected fence and field lines  
visible on aerial photographs. This information is unchecked  
Map photoinspected 1984  
No major culture or drainage changes observed



CONTOUR INTERVAL 20 FEET  
NATIONAL GEODETIC VERTICAL DATUM OF 1929

THIS MAP COMPLIES WITH NATIONAL MAP ACCURACY STANDARDS  
FOR SALE BY U.S. GEOLOGICAL SURVEY  
DENVER, COLORADO 80225, OR RESTON, VIRGINIA 22092  
A FOLDER DESCRIBING TOPOGRAPHIC MAPS AND SYMBOLS IS AVAILABLE ON REQUEST



ROAD CLASSIFICATION  
Heavy-duty ——— Light-duty ———  
Medium-duty ——— Unimproved dirt ———  
U.S. Route ——— State Route ———

NEW HOLLAND, PA.

N4000—W7600/7.5  
PHOTOINSPECTED 1984  
1956  
PHOTOREVISED 1969 AND 1975  
AMS 5764 II SE—SERIES V831

Revisions shown in purple compiled in cooperation with State of  
Pennsylvania agencies from aerial photographs taken 1969 and 1975.  
This information not field checked

