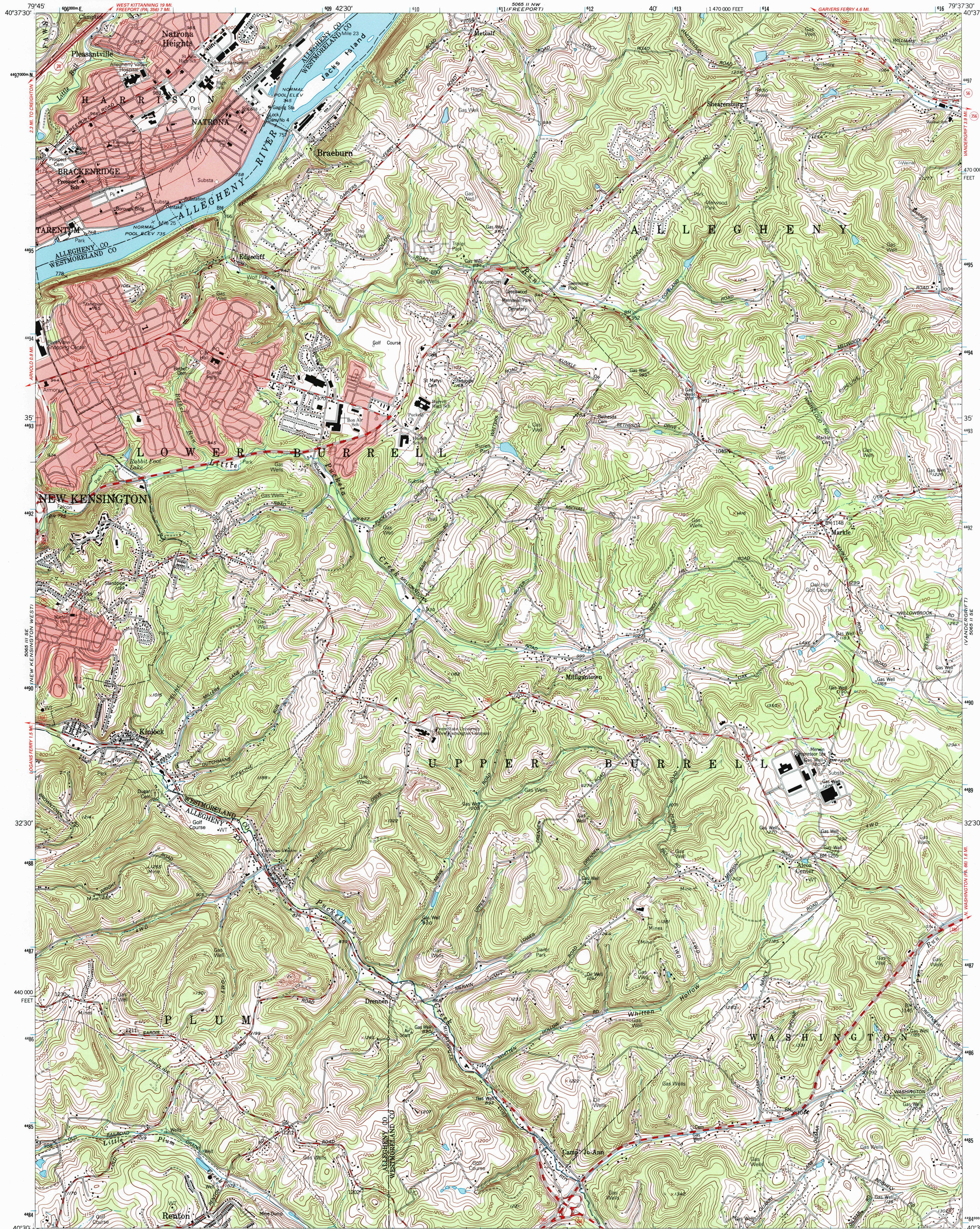
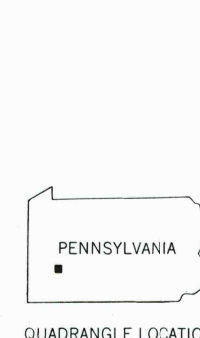
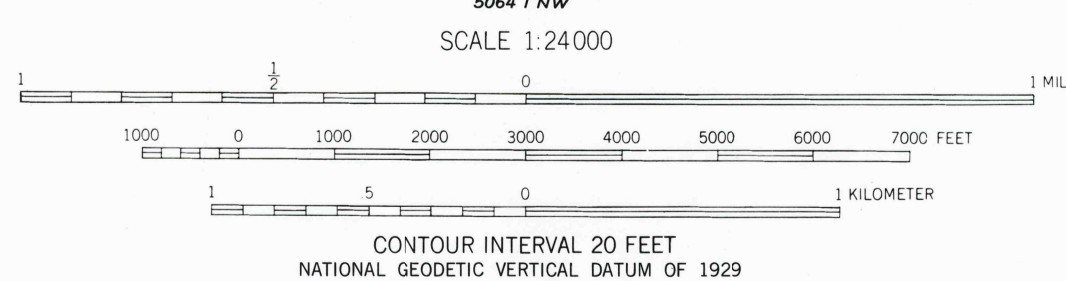
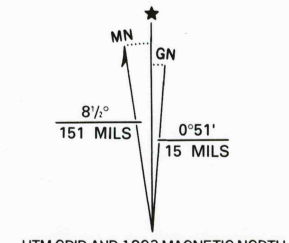


UNITED STATES
DEPARTMENT OF THE INTERIOR
GEOLOGICAL SURVEY

NEW KENSINGTON EAST QUADRANGLE
PENNSYLVANIA
7.5 MINUTE SERIES (TOPOGRAPHIC)



Produced by the United States Geological Survey
in cooperation with Commonwealth of Pennsylvania agencies
Control by USGS and NOS/NOAA
Topography by photogrammetric methods from aerial photographs
taken 1952. Field checked 1953. Revised from aerial photographs
taken 1990-91. Field checked 1992. Map edited 1993
Projection and 10,000-foot grid ticks: Pennsylvania coordinate system,
south zone (Lambert conformal conic)
1000-meter Universal Transverse Mercator grid ticks, zone 17, shown in blue
1927 North American Datum (NAD 27)
North American Datum of 1983 (NAD 83) is shown by dashed corner ticks
The values of the shift between NAD 27 and NAD 83 for 7.5-minute
intersections are given in USGS Bulletin 1875
Red tint indicates areas in which only landmark buildings are shown



ROAD CLASSIFICATION
Primary highway, hard surface
Secondary highway, hard surface
Unimproved road
Interstate Route
U. S. Route
State Route
Light-duty road, hard or improved surface
Unimproved road

NEW KENSINGTON EAST, PA.
40079-E6-TF-024

1993

DMA 5065 II SW-SERIES V831

THIS MAP COMPLIES WITH NATIONAL MAP ACCURACY STANDARDS
FOR SALE BY U.S. GEOLOGICAL SURVEY, DENVER, COLORADO 80225, OR RESTON, VIRGINIA 22092
A FOLDER DESCRIBING TOPOGRAPHIC MAPS AND SYMBOLS IS AVAILABLE ON REQUEST