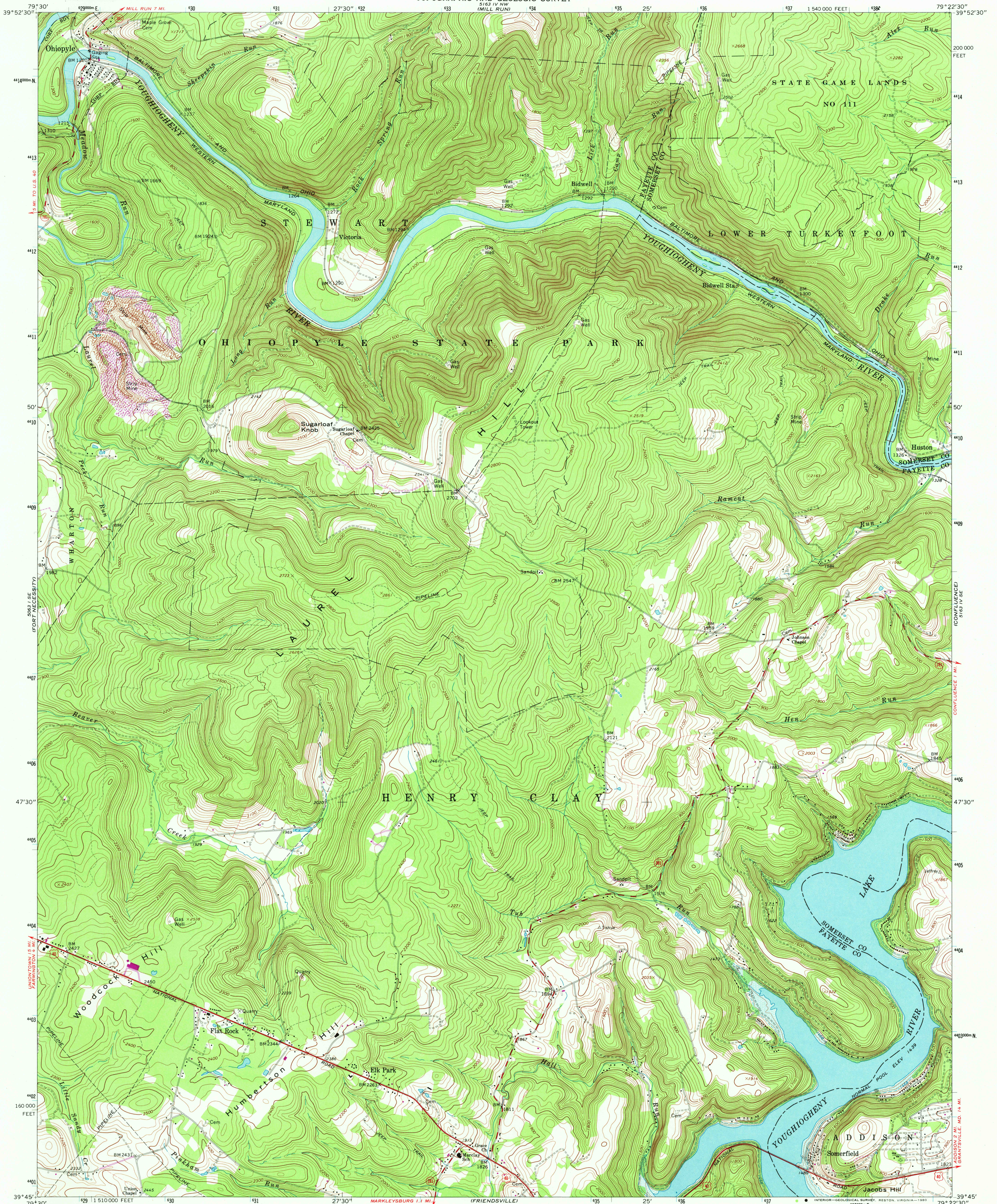


UNITED STATES
DEPARTMENT OF THE INTERIOR
GEOLOGICAL SURVEY

COMMONWEALTH OF PENNSYLVANIA
DEPARTMENT OF ENVIRONMENTAL RESOURCES
TOPOGRAPHIC AND GEOLOGIC SURVEY

OHIOPYLE QUADRANGLE
PENNSYLVANIA
7.5 MINUTE SERIES (TOPOGRAPHIC)



Mapped, edited, and published by the Geological Survey

Control by USGS and USC&GS

Topography by photogrammetric methods from aerial photographs taken 1966. Field checked 1967

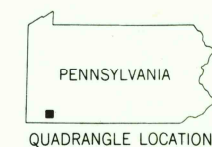
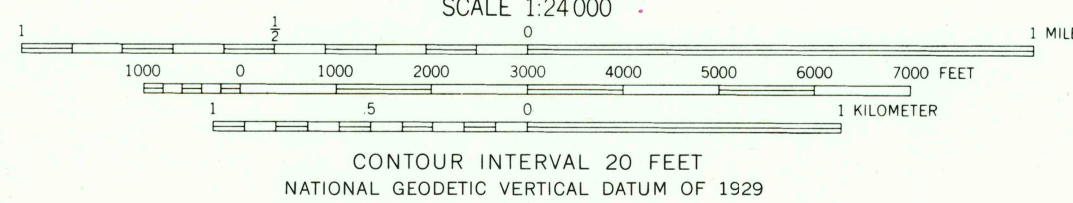
Polyconic projection. 10,000-foot grid ticks based on Pennsylvania coordinate system, south zone 1000-meter Universal Transverse Mercator grid ticks, zone 17, shown in blue. 1927 North American Datum To place on the predicted North American Datum 1983 move the projection lines 5 meters south and 20 meters west as shown by dashed corner ticks

Fine red dashed lines indicate selected fence and field lines where generally visible on aerial photographs This information is unchecked

Areas covered by dashed light-blue pattern are subject to controlled inundation

There may be private inholdings within the boundaries of the National or State reservations shown on this map

Revision shown in purple compiled in cooperation with Commonwealth of Pennsylvania agencies from aerial photographs taken 1973. This information not field checked



Map photoinspected 1977
No major culture or drainage changes observed

ROAD CLASSIFICATION
Primary highway, all weather, hard surface
Secondary highway, all weather, hard surface
Light-duty road, all weather, improved surface
Unimproved road, fair or dry weather
U. S. Route
State Route

USGS
Historical File
Topographic Division

OHIOPYLE, PA.

N 3945—W 7922.5/7.5

PHOTOINSPECTED 1977

1967

PHOTOREVISED 1973
DMA 5163 IV SW—SERIES V831

2259
FEB 3 1981