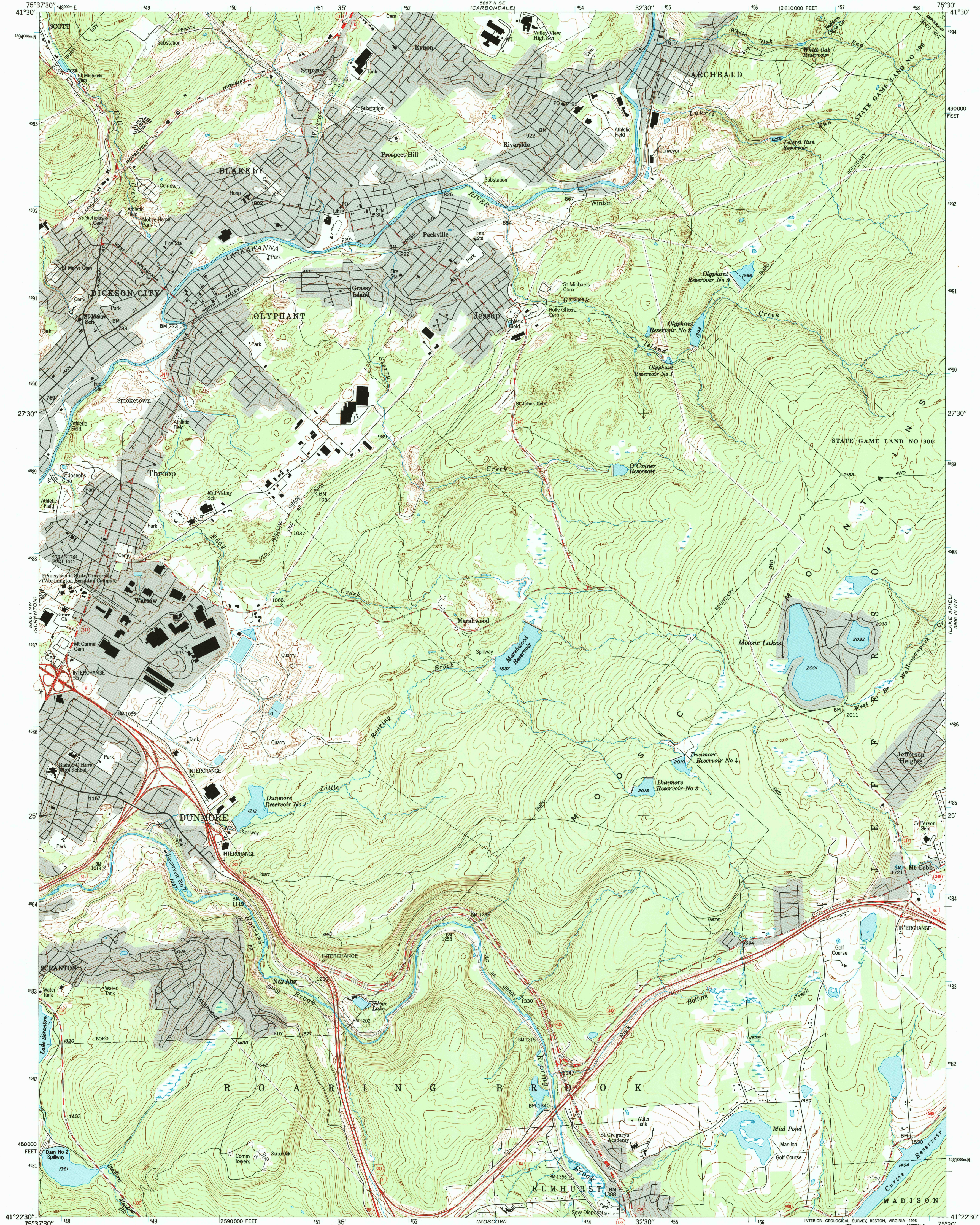


UNITED STATES
DEPARTMENT OF THE INTERIOR
GEOLOGICAL SURVEY

OLYPHANT QUADRANGLE
PENNSYLVANIA-LACKAWANNA CO.
7.5 MINUTE SERIES (TOPOGRAPHIC)



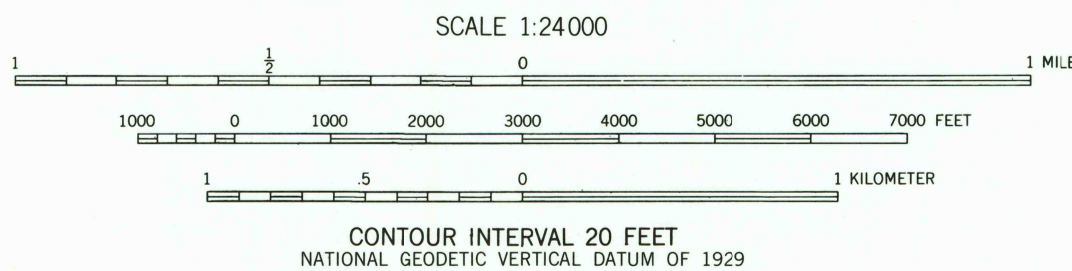
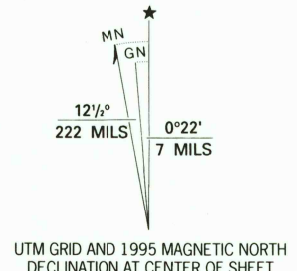
Produced by the United States Geological Survey
in cooperation with Commonwealth of Pennsylvania agencies

Compiled by photogrammetric methods from imagery dated 1942
Field checked 1946. Revised from imagery dated 1992 and
other sources. Field checked 1994. Map edited 1995

North American Datum of 1927 (NAD 27). Projection and
10 000-foot ticks: Pennsylvania coordinate system, north zone
(Lambert conformal conic)

Blue 1000-meter Universal Transverse Mercator ticks, zone 18
North American Datum of 1983 (NAD 83) is shown by dashed
corner ticks. The values of the shift between NAD 27 and NAD 83
for 7.5-minute intersections are obtainable from National Geodetic
Survey NADCON software

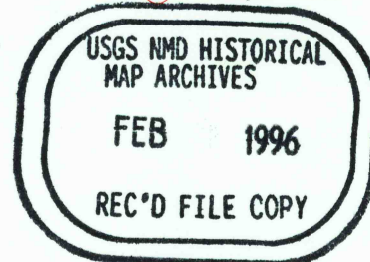
There may be private inholdings within the boundaries of
the National or State reservations shown on this map



FOR SALE BY U.S. GEOLOGICAL SURVEY, DENVER, COLORADO 80225, OR RESTON, VIRGINIA 22092
A FOLDER DESCRIBING TOPOGRAPHIC MAPS AND SYMBOLS IS AVAILABLE ON REQUEST



ROAD CLASSIFICATION	
Primary highway, hard surface	Light-duty road, hard or improved surface
Secondary highway, hard surface	Unimproved road
Interstate Route	U. S. Route
	State Route



OLYPHANT, PA
41075-05-TF-024

1994

DMA 5866 1 NE-SERIES V831

