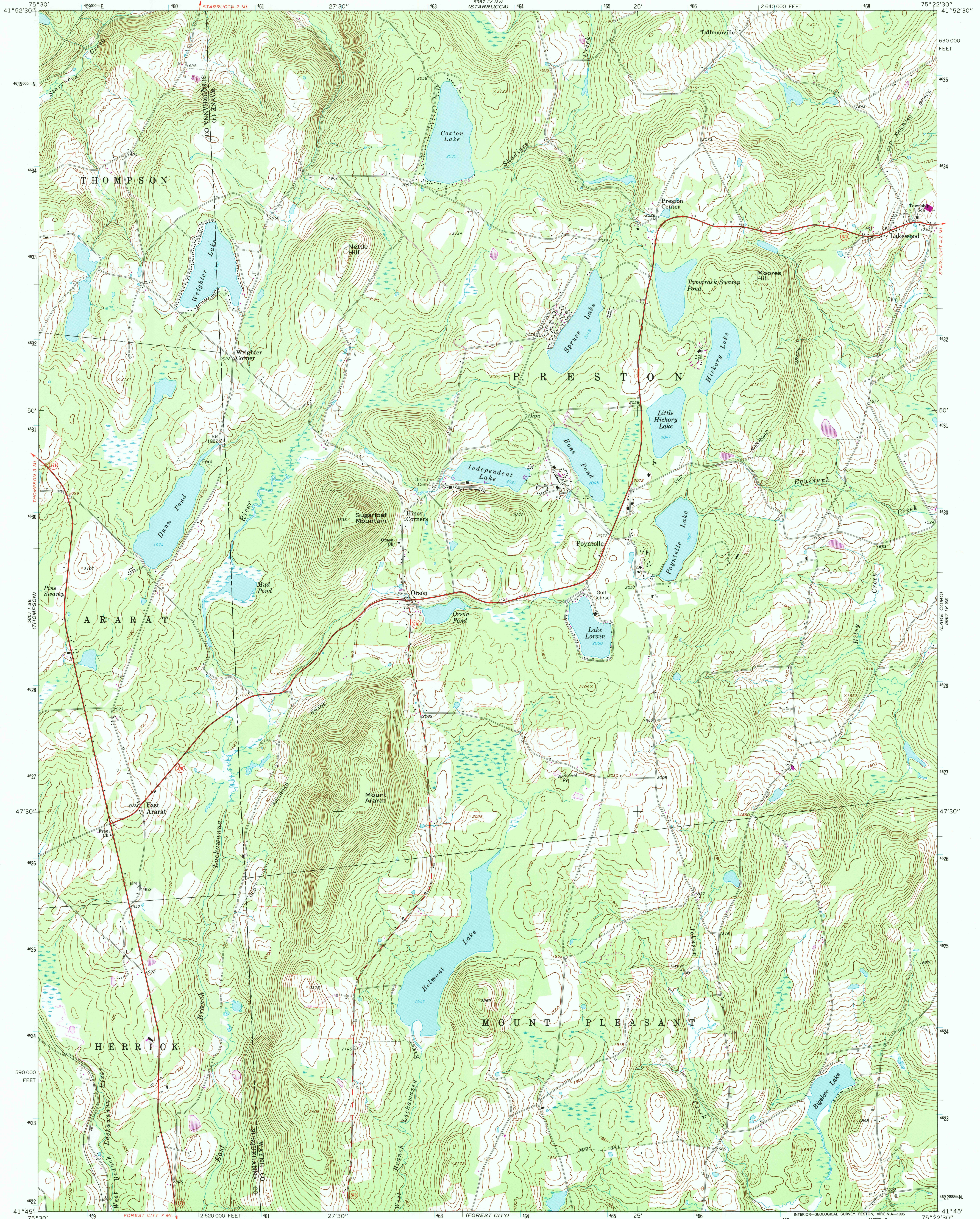


UNITED STATES  
DEPARTMENT OF THE INTERIOR  
GEOLOGICAL SURVEY

ORSON QUADRANGLE  
PENNSYLVANIA  
7.5 MINUTE SERIES (TOPOGRAPHIC)



Produced by the U. S. Geological Survey

Compiled by photogrammetric methods from imagery dated 1966  
Field checked 1968  
Photorevised using imagery dated 1992, no major culture or drainage  
changes observed. Boundaries and names revised 1995

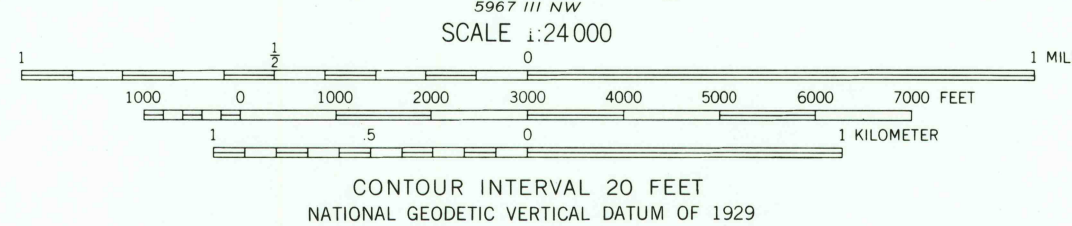
North American Datum of 1927 (NAD 27). Projection and  
10 000-foot ticks: Pennsylvania coordinate system, north zone  
(Lambert conformal conic)  
Blue 1000-meter Universal Transverse Mercator grid ticks, zone 18

North American Datum of 1983 (NAD 83) is shown by dashed  
corner ticks. The values of the shift between NAD 27 and NAD 83  
for 7.5-minute intersections are obtainable from National Geodetic  
Survey NADCON software.

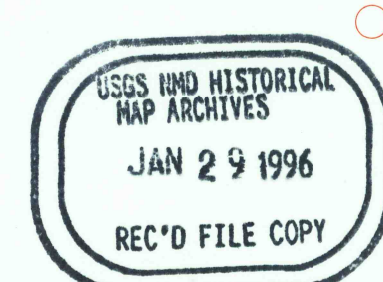
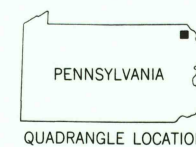
There may be private inholdings within the boundaries of  
the National or State reservations shown on this map

UTM GRID AND 1995 MAGNETIC NORTH  
DECLINATION AT CENTER OF SHEET  
Revisions shown in purple compiled in cooperation with  
Commonwealth of Pennsylvania agencies from imagery  
dated 1976. This information not field checked  
Map edited 1978

THIS MAP COMPLIES WITH NATIONAL MAP ACCURACY STANDARDS  
FOR SALE BY U.S. GEOLOGICAL SURVEY  
DENVER, COLORADO 80225, OR RESTON, VIRGINIA 22092  
A FOLDER DESCRIBING TOPOGRAPHIC MAPS AND SYMBOLS IS AVAILABLE ON REQUEST



ROAD CLASSIFICATION			
Primary highway, all weather, hard surface	Light-duty road, all weather, improved surface		
Secondary highway, all weather, hard surface	Unimproved road, fair or dry weather		
	State Route		



ORSON, PA  
41075-G4-TF-024  
1992

DMA 5967 IV SW-SERIES V831

