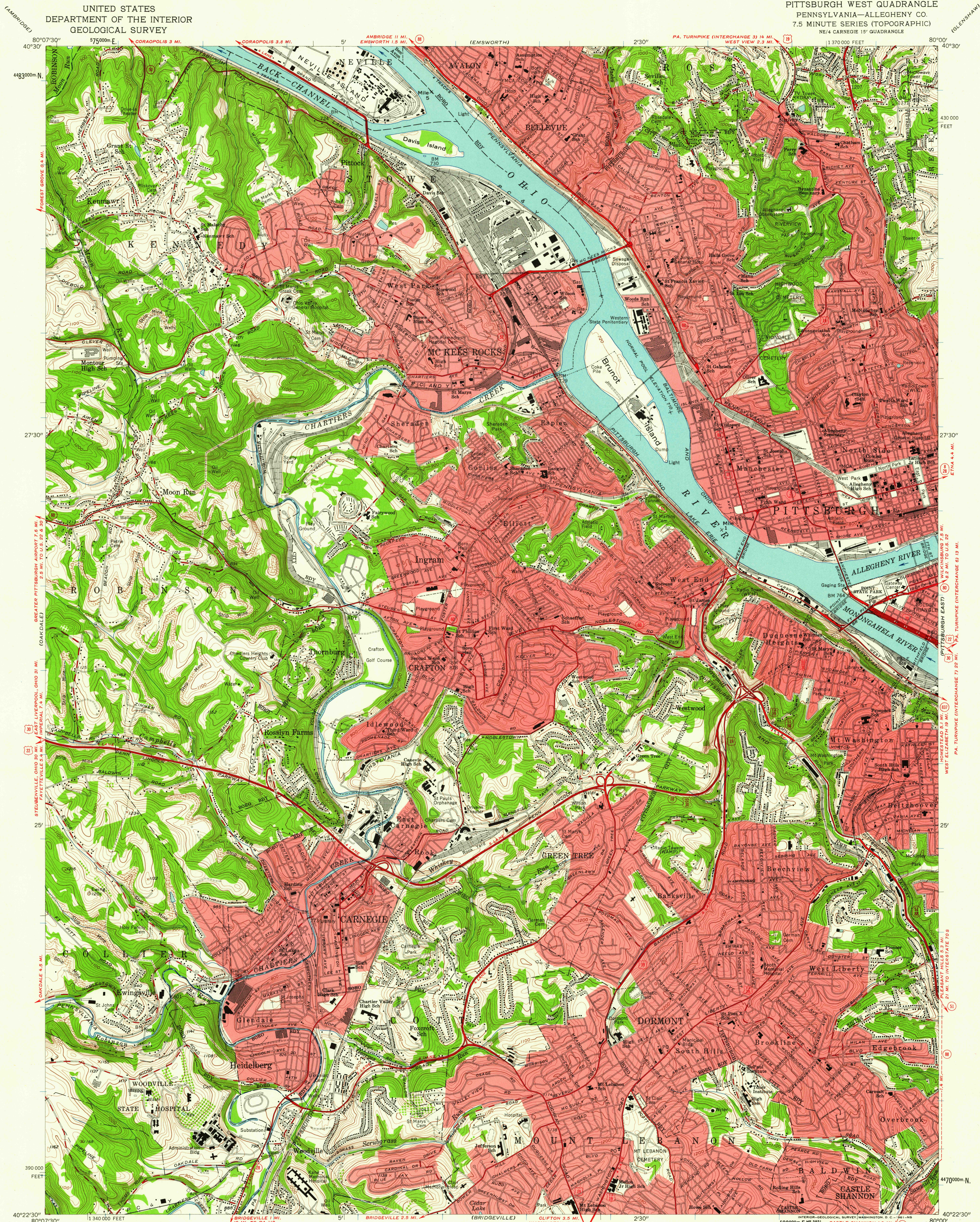
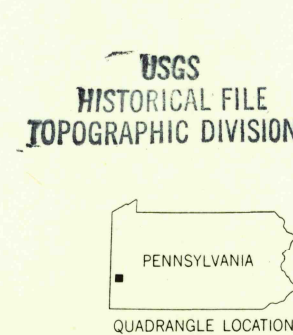
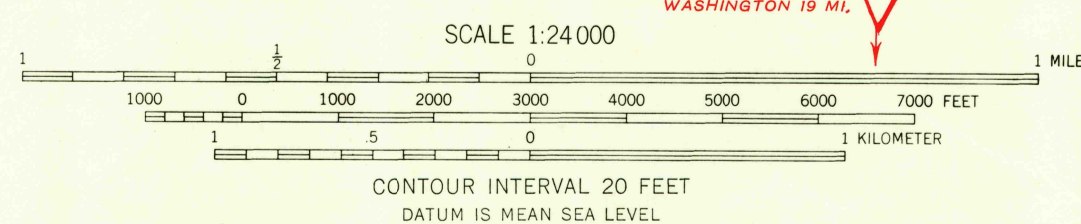


UNITED STATES
DEPARTMENT OF THE INTERIOR
GEOLOGICAL SURVEY

PITTSBURGH WEST QUADRANGLE
PENNSYLVANIA—ALLEGHENY CO.
7.5 MINUTE SERIES (TOPOGRAPHIC)
NE/4 CARNEGIE 15' QUADRANGLE



Maped, edited, and published by the Geological Survey
Control by USGS, USCGS, USCE, and the City of Pittsburgh
Topography by planetable surveys 1925-1941, and 1948
Revised 1960
Polyconic projection. 1927 North American datum
10,000-foot grid based on Pennsylvania coordinate system, south zone
1000-meter Universal Transverse Mercator grid ticks,
zone 17, shown in blue
Red tint indicates areas in which only landmark buildings are shown



ROAD CLASSIFICATION
Heavy-duty ——— Light-duty ———
Medium-duty ——— Unimproved dirt ———
Interstate Route U.S. Route State Route

PITTSBURGH WEST, PA.
NE/4 CARNEGIE 15' QUADRANGLE
N4022.5—W8000/7.5

THIS MAP COMPLIES WITH NATIONAL MAP ACCURACY STANDARDS
FOR SALE BY U.S. GEOLOGICAL SURVEY, WASHINGTON 25, D. C.
A FOLDER DESCRIBING TOPOGRAPHIC MAPS AND SYMBOLS IS AVAILABLE ON REQUEST

