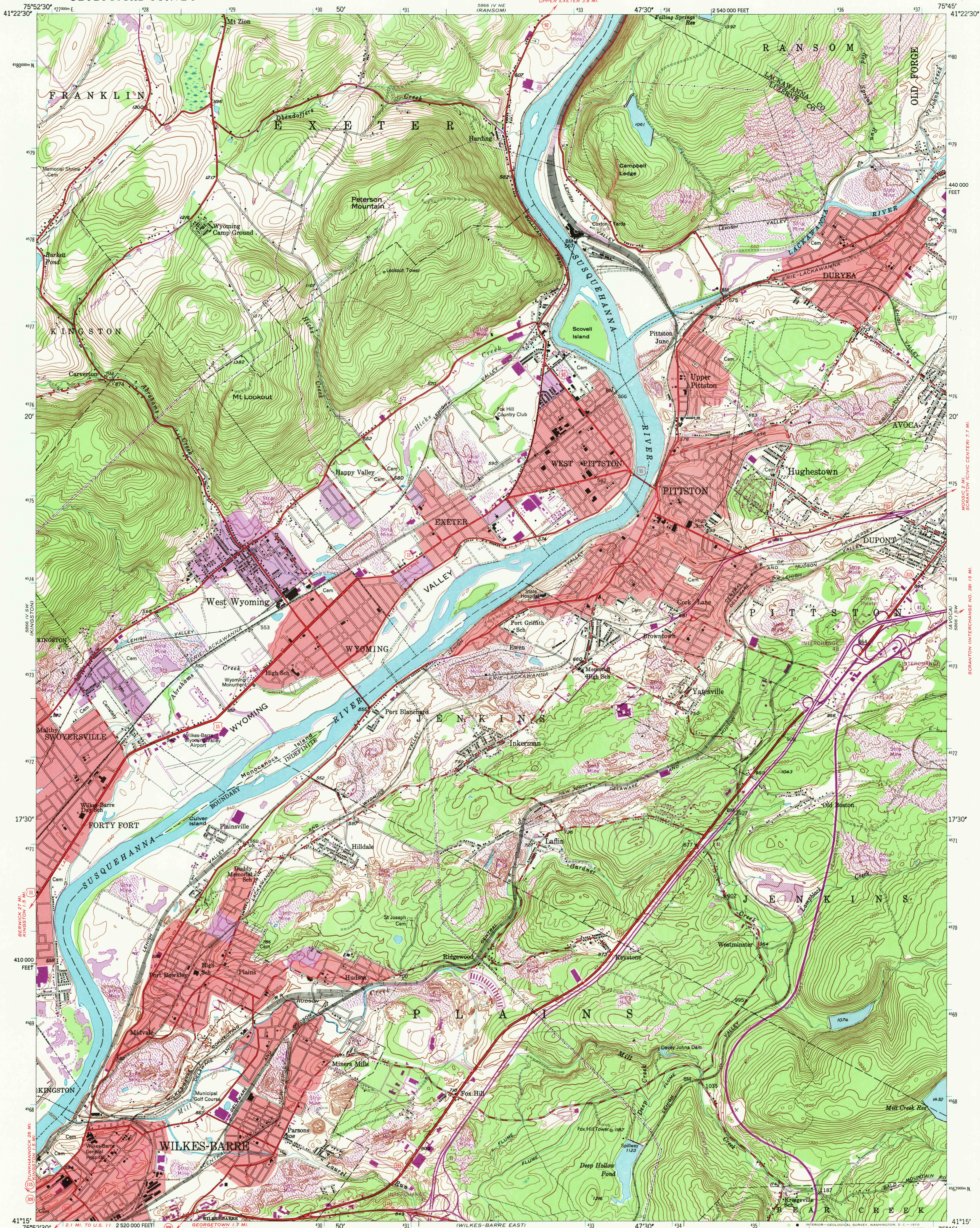


UNITED STATES
DEPARTMENT OF THE INTERIOR
GEOLOGICAL SURVEY

PITTSBURGH QUADRANGLE
PENNSYLVANIA
7.5 MINUTE SERIES (TOPOGRAPHIC)



Maped, edited, and published by the Geological Survey

Control by USGS, USC&GS, and USCE

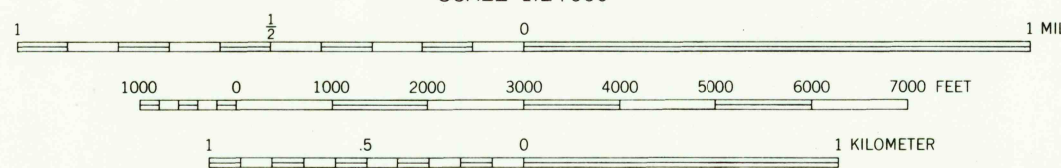
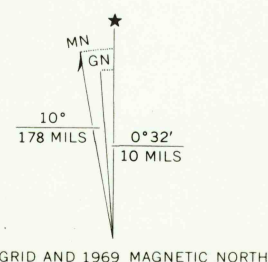
Topography by photogrammetric methods from aerial photographs taken 1942. Field checked 1947

Polyconic projection, 1927 North American datum
10,000-foot grid based on Pennsylvania coordinate system, north zone
1000-meter Universal Transverse Mercator grid ticks, zone 18, shown in blue

Red tint indicates areas in which only landmark buildings are shown

Revisions shown in purple compiled in cooperation with State of Pennsylvania agencies, from aerial photographs taken 1969
This information not field checked

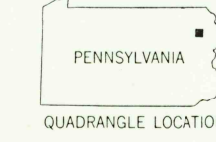
Purple tint indicates extension of urban areas



CONTOUR INTERVAL 20 FEET
DATUM IS MEAN SEA LEVEL

THIS MAP COMPLIES WITH NATIONAL MAP ACCURACY STANDARDS
FOR SALE BY U.S. GEOLOGICAL SURVEY, WASHINGTON, D. C. 20242
A FOLDER DESCRIBING TOPOGRAPHIC MAPS AND SYMBOLS IS AVAILABLE ON REQUEST

USGS
HISTORICAL FILE
TOPOGRAPHIC DIVISION



QUADRANGLE LOCATION

ROAD CLASSIFICATION
Heavy-duty ——— Light-duty ———
Medium-duty ——— Unimproved dirt ———
Interstate Route ——— U.S. Route ——— State Route ———

U.S.G.S.

FILE COPY
TOPOGRAPHIC DIVISION

PITTSBURGH, PA.

N4115-W7545/7.5

1947
PHOTOREVISED 1969
AMS 5866 IV SE-SERIES V831

MAR 12 1970