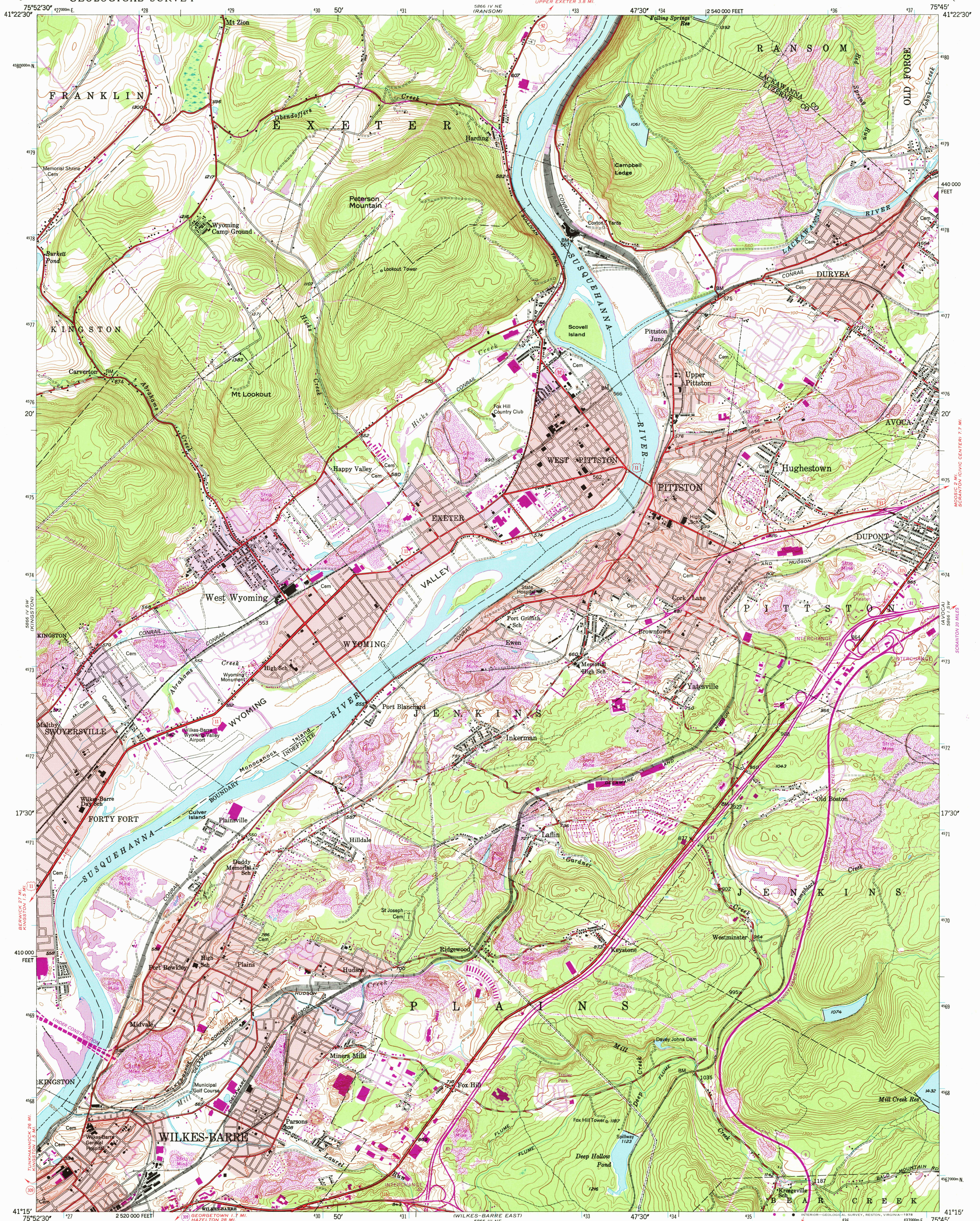
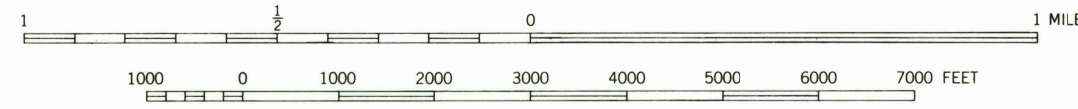
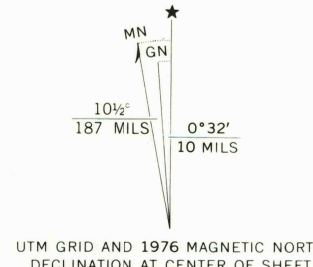


UNITED STATES  
DEPARTMENT OF THE INTERIOR  
GEOLOGICAL SURVEY

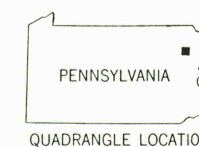
PITTSTON QUADRANGLE  
PENNSYLVANIA  
7.5 MINUTE SERIES (TOPOGRAPHIC)



Mapped, edited, and published by the Geological Survey  
Control by USGS, USC&GS, and USCE  
Topography by photogrammetric methods from aerial photographs  
taken 1942. Field checked 1947  
Polyconic projection. 1927 North American datum  
10,000-foot grid based on Pennsylvania coordinate system, north zone  
1000-meter Universal Transverse Mercator grid ticks, zone 18,  
shown in blue  
Red tint indicates areas in which only landmark buildings are shown  
Revisions shown in purple compiled in cooperation with  
State of Pennsylvania agencies, from aerial photographs  
taken 1969 and 1976. This information not field checked  
Purple tint indicates extension of urban areas



CONTOUR INTERVAL 20 FEET  
NATIONAL GEODETIC VERTICAL DATUM OF 1929  
THIS MAP COMPLIES WITH NATIONAL MAP ACCURACY STANDARDS  
FOR SALE BY U.S. GEOLOGICAL SURVEY, RESTON, VIRGINIA 22092  
A FOLDER DESCRIBING TOPOGRAPHIC MAPS AND SYMBOLS IS AVAILABLE ON REQUEST



ROAD CLASSIFICATION  
Heavy-duty ——— Light-duty ———  
Medium-duty ——— Unimproved dirt ———  
Interstate Route U.S. Route State Route

USGS  
Historical File  
Topographic Division

PITTSTON, PA. AUG 17 1978  
N4115-W7545/7.5  
1947  
PHOTOREVISED 1969 AND 1976  
AMS 5866 IV SE—SERIES V831