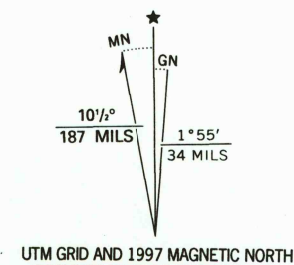
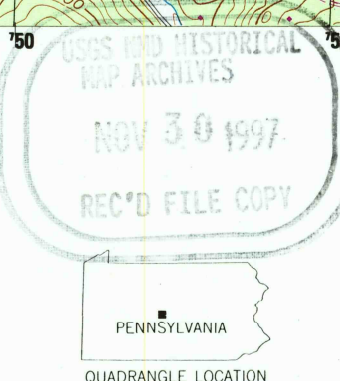


Produced by the United States Geological Survey
Topography compiled 1957. Planimetry derived from imagery taken 1977. Photomaps used imagery dated 1994; no major culture or drainage changes observed. Survey control current as of 1959. Boundaries, other than corporate, revised 1997.
North American Datum of 1927 (NAD 27). Projection and 10 000-foot ticks: Pennsylvania coordinate system, north zone (Lambert conformal conic).
1000-meter Universal Transverse Mercator grid, zone 17.
North American Datum of 1983 (NAD 83) is shown by dashed corner ticks. The values of the shift between NAD 27 and NAD 83 for 7.5-minute intersections are obtainable from National Geodetic Survey NADCON software.
There may be private inholdings within the boundaries of the National or State reservations shown on this map.
Information shown in purple may not meet USGS content standards and may conflict with previously mapped contours.



SCALE 1:24 000
CONTOUR INTERVAL 20 FEET
NATIONAL GEODETIC VERTICAL DATUM OF 1929
TO CONVERT FROM FEET TO METERS, MULTIPLY BY 0.3048

THIS MAP COMPLIES WITH NATIONAL MAP ACCURACY STANDARDS
FOR SALE BY U.S. GEOLOGICAL SURVEY, P.O. BOX 25286, DENVER, COLORADO 80225
A FOLDER DESCRIBING TOPOGRAPHIC MAPS AND SYMBOLS IS AVAILABLE ON REQUEST



ROAD CLASSIFICATION
Primary highway, hard surface
Secondary highway, hard surface
Light-duty road, hard or improved surface
Unimproved road
Interstate Route
U.S. Route
State Route

PORT MATILDA, PA.

1994

DMA 5365 I SE-SERIES V831

