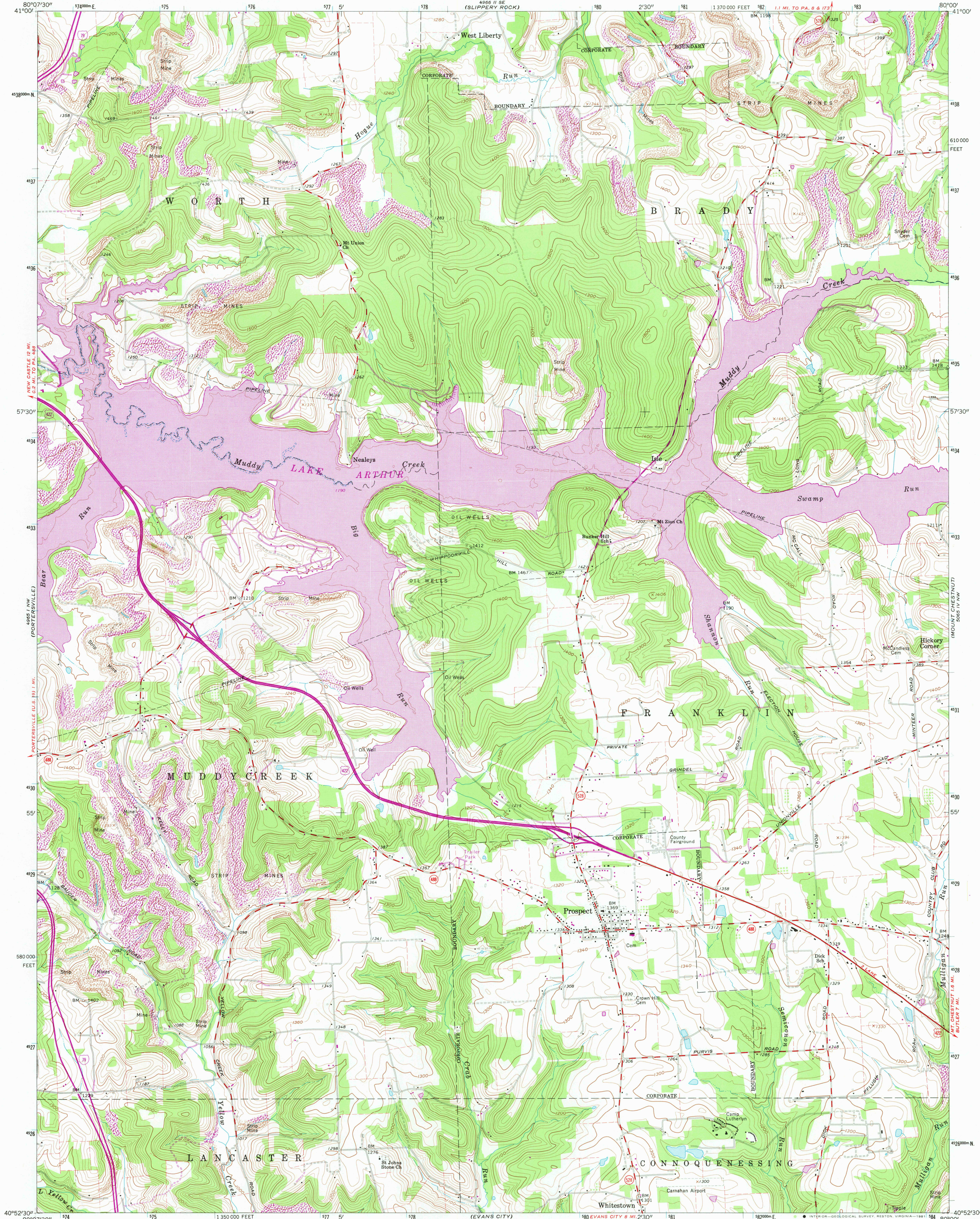


UNITED STATES  
DEPARTMENT OF THE INTERIOR  
GEOLOGICAL SURVEY

PROSPECT QUADRANGLE  
PENNSYLVANIA—BUTLER CO.  
7.5 MINUTE SERIES (TOPOGRAPHIC)



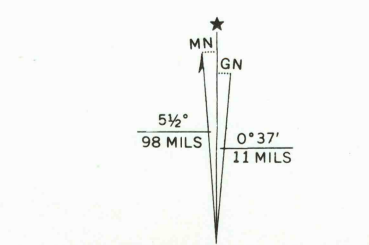
Mapped, edited, and published by the Geological Survey

Control by USGS and NOS/NOAA  
Topography by photogrammetric methods from aerial  
photographs taken 1958. Field checked 1961

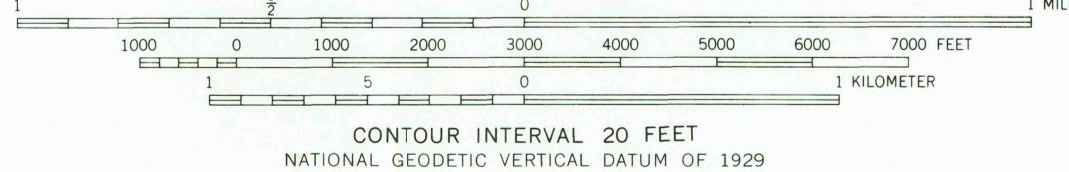
Polyconic projection. 10,000-foot grid ticks based on  
Pennsylvania coordinate system, south zone.  
1000-meter Universal Transverse Mercator grid ticks,  
zone 17, shown in blue. 1927 North American Datum  
To place on the predicted North American Datum 1983  
move the projection lines 3 meters south and  
18 meters west as shown by dashed corner ticks

Fine red dashed lines indicate selected fence and field lines where  
generally visible on aerial photographs. This information is unchecked

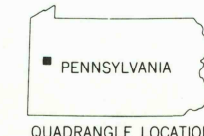
Revisions shown in purple compiled in cooperation with  
Commonwealth of Pennsylvania agencies from aerial  
photographs taken 1970. This information not field checked



Map photorevised 1977  
No major culture or drainage changes observed



THIS MAP COMPLIES WITH NATIONAL MAP ACCURACY STANDARDS  
FOR SALE BY U.S. GEOLOGICAL SURVEY, RESTON, VIRGINIA 22092  
A FOLDER DESCRIBING TOPOGRAPHIC MAPS AND SYMBOLS IS AVAILABLE ON REQUEST



ROAD CLASSIFICATION	
Heavy-duty	Light-duty
Medium-duty	Unimproved dirt
U.S. Route	State Route
Interstate Route	

PROSPECT, PA.

N4052.5—W8000/7.5  
PHOTOINSPECTED 1977  
1961  
PHOTOREVISED 1970  
DMA 4965 1 NE—SERIES V831

NOV 9 1981