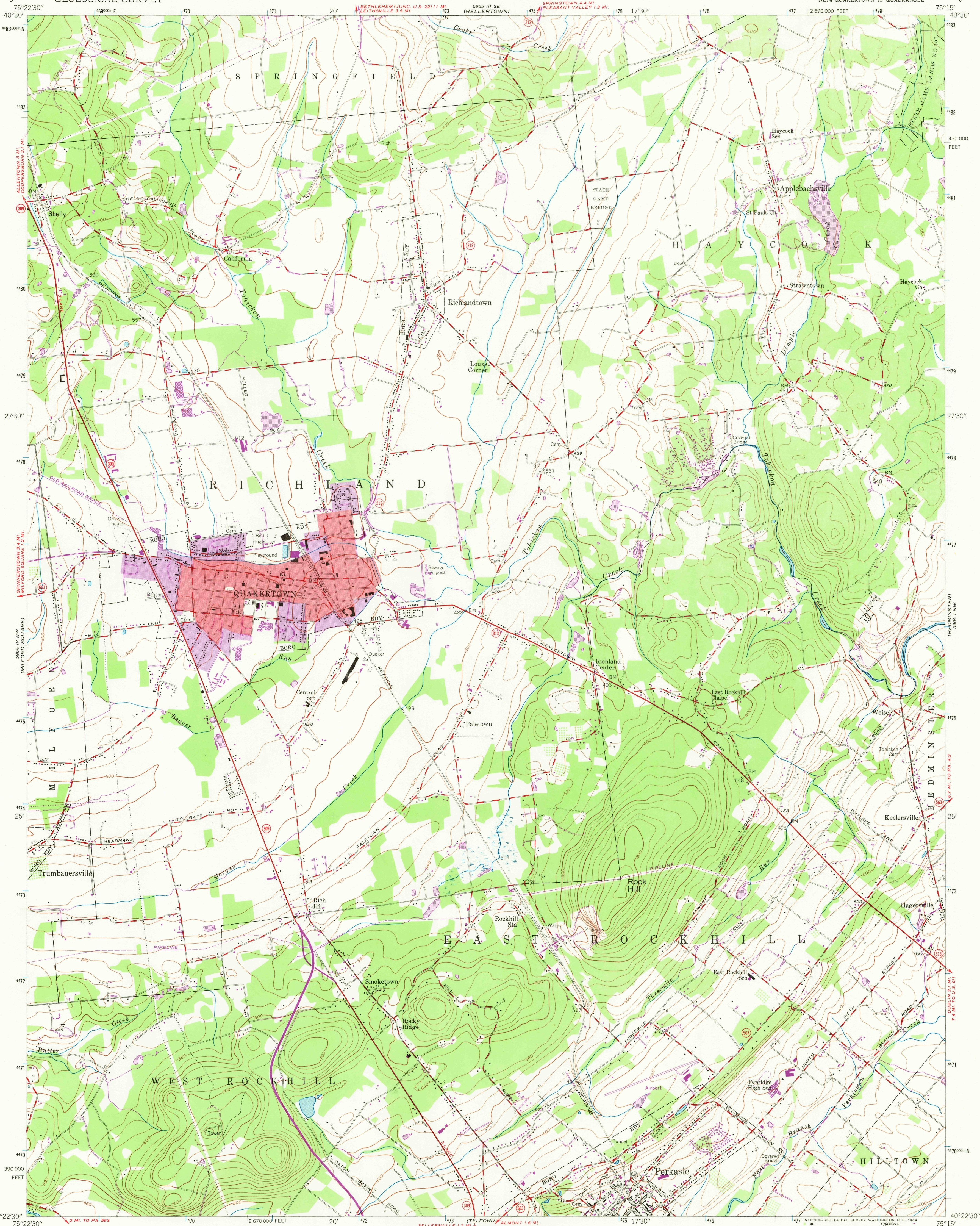


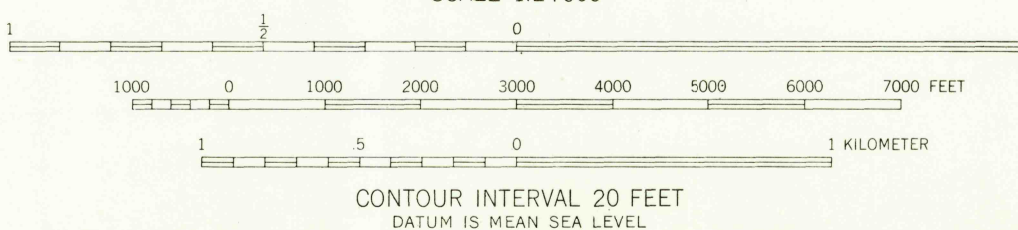
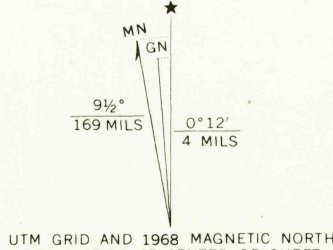
UNITED STATES  
DEPARTMENT OF THE INTERIOR  
GEOLOGICAL SURVEY

QUAKERTOWN QUADRANGLE  
PENNSYLVANIA—BUCKS CO.  
7.5 MINUTE SERIES (TOPOGRAPHIC)  
NE/4 QUAKERTOWN 15' QUADRANGLE



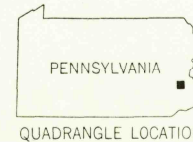
Mapped by the Army Map Service  
Edited and published by the Geological Survey  
Control by USGS and USC&GS

Topography from aerial photographs by photogrammetric methods. Field check 1943  
Culture revised by the Geological Survey 1957  
Polyconic projection. 1927 North American datum  
10,000-foot grid based on Pennsylvania coordinate system,  
south zone  
1000-meter Universal Transverse Mercator grid ticks,  
zone 18, shown in blue  
Red tint indicates area in which only  
landmark buildings are shown



THIS MAP COMPLIES WITH NATIONAL MAP ACCURACY STANDARDS  
FOR SALE BY U.S. GEOLOGICAL SURVEY, WASHINGTON, D.C. 20242  
A FOLDER DESCRIBING TOPOGRAPHIC MAPS AND SYMBOLS IS AVAILABLE ON REQUEST

USGS  
HISTORICAL FILE  
TOPOGRAPHIC DIVISION



ROAD CLASSIFICATION

Heavy-duty  
Light-duty  
Unimproved dirt  
State Route

FILE COPY  
TOPOGRAPHIC DIVISION

QUAKERTOWN, PA.  
NE/4 QUAKERTOWN 15' QUADRANGLE  
N4022.5-W7515/7.5

Revisions shown in purple compiled by Geological Survey in  
cooperation with State of Pennsylvania agencies, from aerial  
photographs taken 1968. This information not field checked  
Purple tint indicates extension of urban areas

1957  
PHOTOGRAPHED 1968  
AMS 5964 IV NE—SERIES V-851

3555  
JUL 28 1969