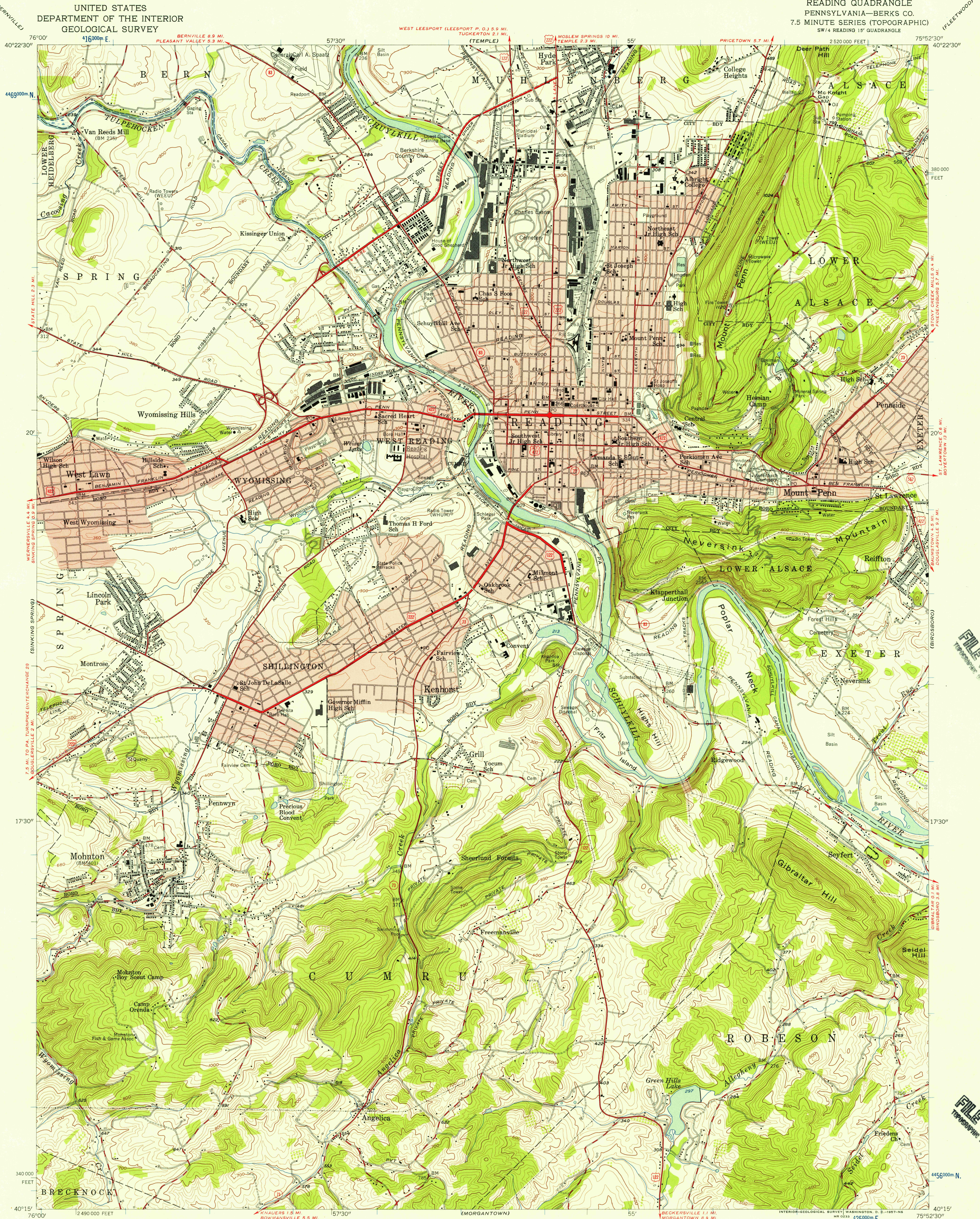


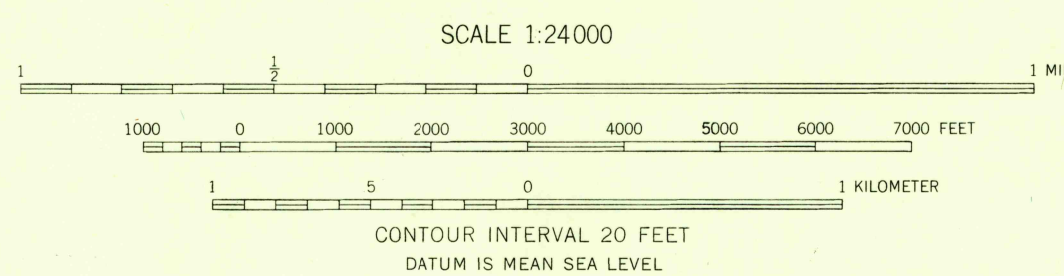
UNITED STATES
DEPARTMENT OF THE INTERIOR
GEOLOGICAL SURVEY

READING QUADRANGLE
PENNSYLVANIA—BERKS CO.
7.5 MINUTE SERIES (TOPOGRAPHIC)
SW 1/4 READING 15' QUADRANGLE

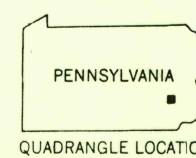


Mapped, edited, and published by the Geological Survey
Control by USGS, USC&GS, and USCE
Topography from aerial photographs by multiplex methods
Aerial photographs taken 1947. Field check 1956
Polyconic projection. 1927 North American datum
10,000-foot grid based on Pennsylvania coordinate system,
south zone
1,000-meter Universal Transverse Mercator grid ticks
zone 18, shown in blue
Red tint indicates areas in which only
landmark buildings are shown

APPROXIMATE MEAN
DECLINATION, 1956



USGS
HISTORICAL FILE
TOPOGRAPHIC DIVISION



ROAD CLASSIFICATION
Heavy-duty ——— Light-duty ———
Medium-duty ——— Unimproved dirt ———
U. S. Route ——— State Route ———

READING, PA.
SW 1/4 READING 15' QUADRANGLE
N4015-W7552.5/7.5

1956

USGS
HISTORICAL FILE
TOPOGRAPHIC DIVISION

OCT 15 1957

31/4