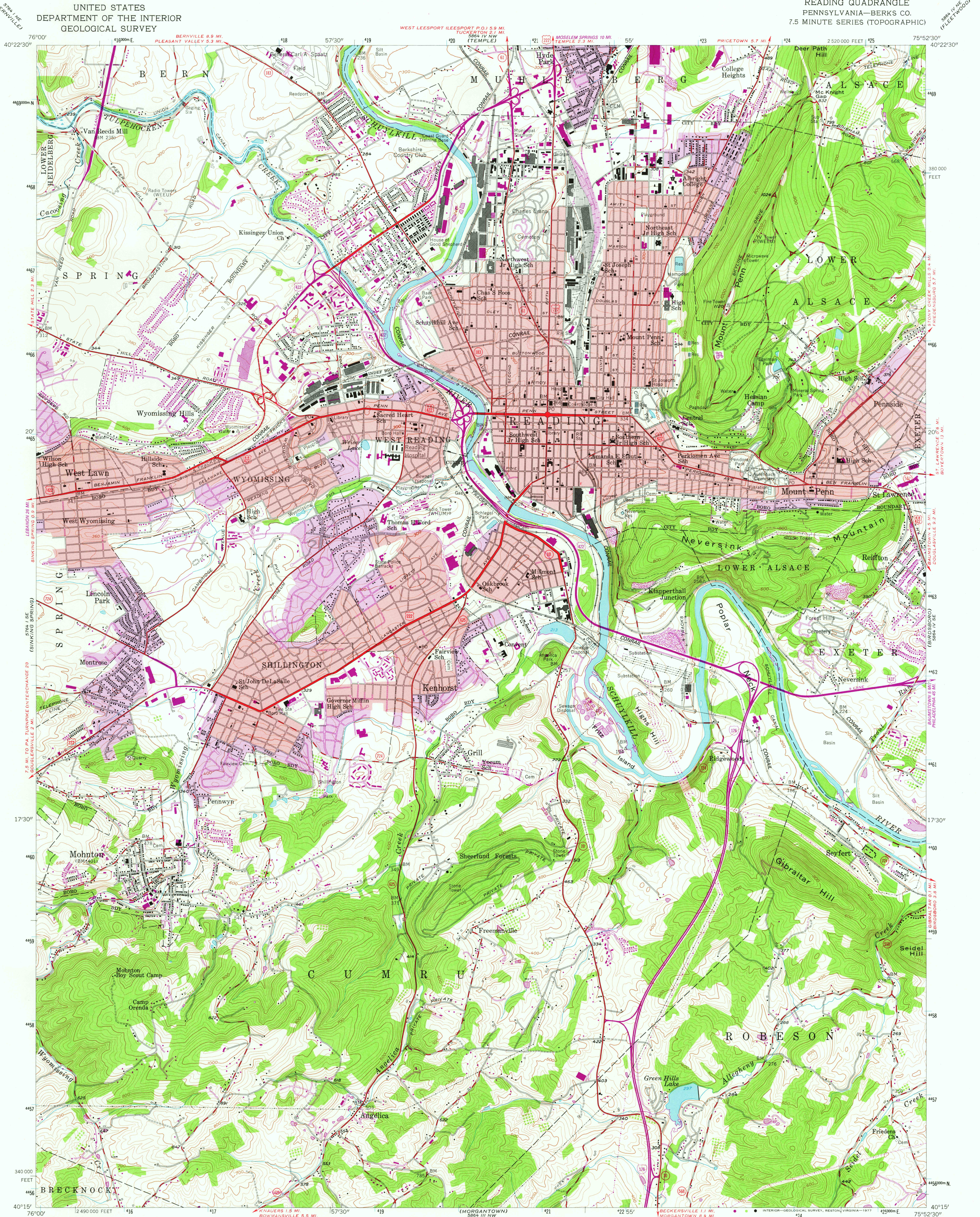
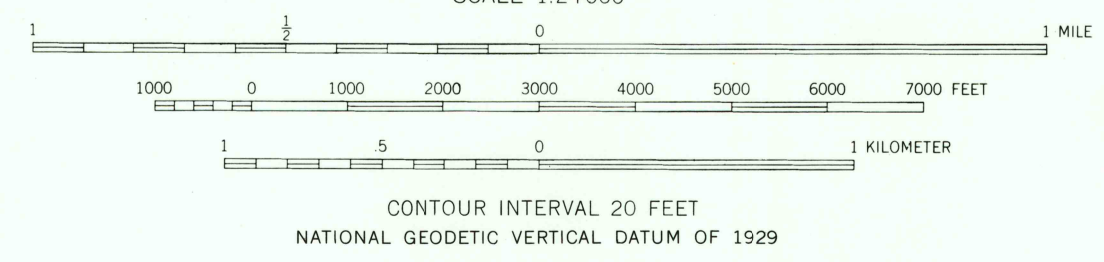
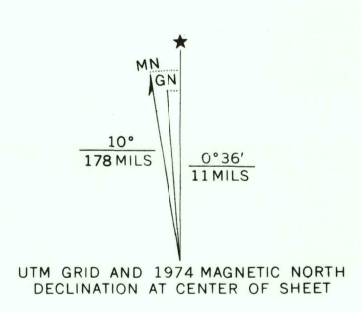


UNITED STATES
DEPARTMENT OF THE INTERIOR
GEOLOGICAL SURVEY

READING QUADRANGLE
PENNSYLVANIA—BERKS CO.
7.5 MINUTE SERIES (TOPOGRAPHIC)



Mapped, edited, and published by the Geological Survey
Control by USGS, USC&GS, and USCE
Topography from aerial photographs by multiplex methods
Aerial photographs taken 1947. Field check 1956
Polyconic projection. 1927 North American datum
10,000-foot grid based on Pennsylvania coordinate system,
south zone
1,000-meter Universal Transverse Mercator grid ticks
zone 18, shown in blue
Red tint indicates areas in which only
landmark buildings are shown
Revisions shown in purple compiled in cooperation with State of
Pennsylvania agencies from aerial photographs taken 1968 and 1974
This information not field checked
Purple tint indicates urban areas



ROAD CLASSIFICATION

Heavy-duty	Light-duty
Medium-duty	Unimproved dirt
Interstate Route	U.S. Route
	State Route

USGS
Historical File
Topographic Division

READING, PA.
N4015-W7552.5/7.5
1956
PHOTOREVISED 1968 AND 1974
AMS 5864 IV SW-SERIES V831

APR 06 1978
6450

THIS MAP COMPLIES WITH NATIONAL MAP ACCURACY STANDARDS
FOR SALE BY U.S. GEOLOGICAL SURVEY, RESTON, VIRGINIA 22092
A FOLDER DESCRIBING TOPOGRAPHIC MAPS AND SYMBOLS IS AVAILABLE ON REQUEST