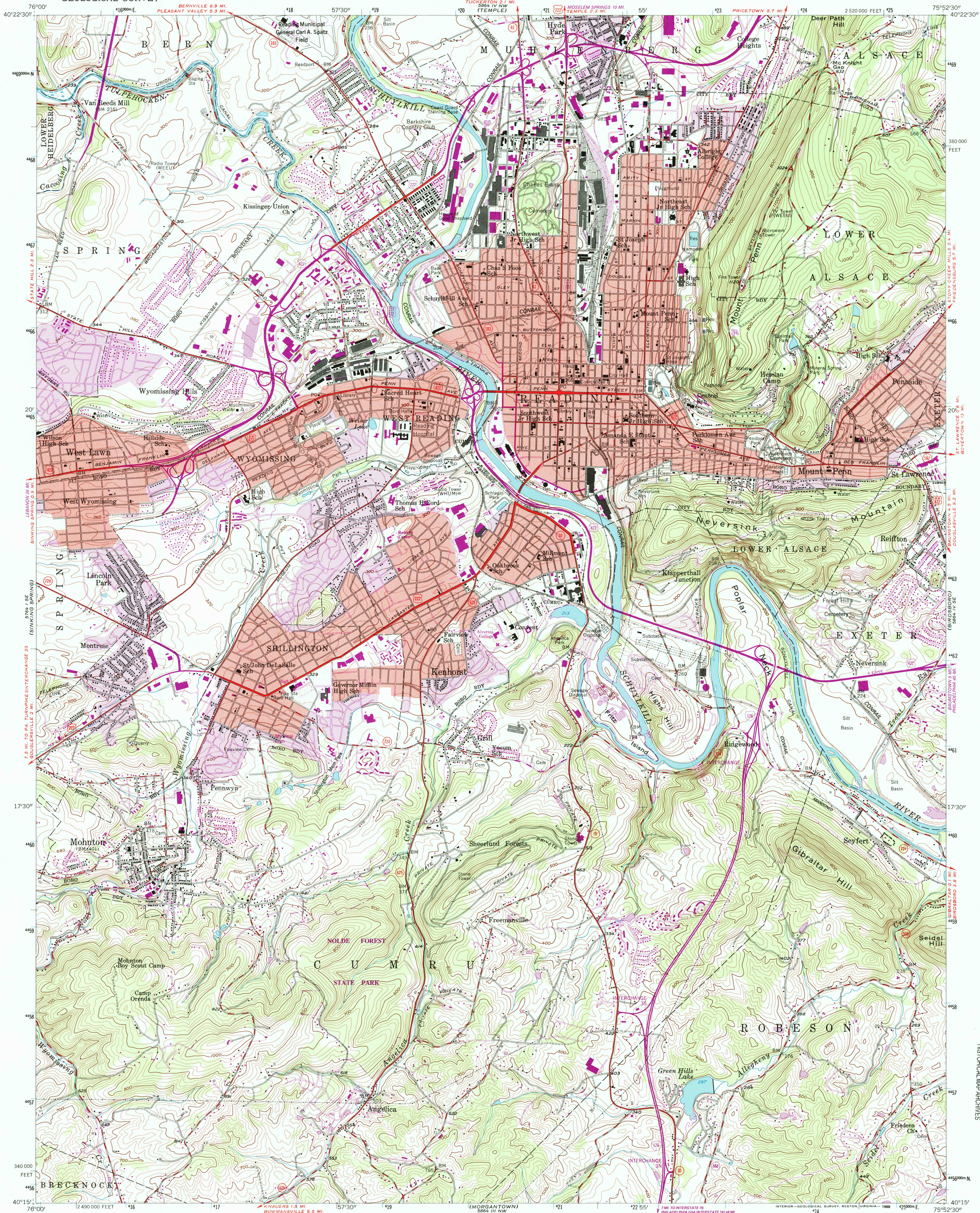


UNITED STATES
DEPARTMENT OF THE INTERIOR
GEOLOGICAL SURVEY

READING QUADRANGLE
PENNSYLVANIA—BERKS CO.
7.5 MINUTE SERIES (TOPOGRAPHIC)



Mapped, edited, and published by the Geological Survey

Control by USGS, NOS/NOAA, and USCE

Topography by photogrammetric methods from aerial photographs taken 1947. Field checked 1956

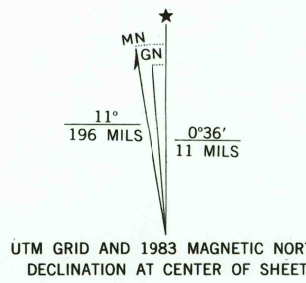
Polyconic projection. 10,000-foot grid ticks based on Pennsylvania coordinate system, south zone. 1000-meter Universal Transverse Mercator grid ticks, zone 18, shown in blue

1927 North American Datum

To place on the predicted North American Datum 1983 move the projection lines 6 meters south and 30 meters west as shown by dashed corner ticks

Red tint indicates areas in which only landmark buildings are shown

There may be private inholdings within the boundaries of the National or State reservations shown on this map



SCALE 1:24,000

CONTOUR INTERVAL 20 FEET
NATIONAL GEODETIC VERTICAL DATUM OF 1929

THIS MAP COMPLIES WITH NATIONAL MAP ACCURACY STANDARDS
FOR SALE BY U. S. GEOLOGICAL SURVEY
DENVER, COLORADO 80225, OR RESTON, VIRGINIA 22092
A FOLDER DESCRIBING TOPOGRAPHIC MAPS AND SYMBOLS IS AVAILABLE ON REQUEST



ROAD CLASSIFICATION
Heavy-duty ——— Light-duty ———
Medium-duty ——— Unimproved dirt ———
Interstate Route U.S. Route State Route

READING, PA.
40075-C8-TF-024

1956
PHOTOREVISED 1983
DMA 5864 IV SW—SERIES V851

Revisions shown in purple and woodland compiled in cooperation with Commonwealth of Pennsylvania agencies from aerial photographs taken 1981 and other sources. This information not field checked
Map edited 1983
Purple tint indicates extension of urban areas

RECEIVED
DEC 3 1 1998
USGS M&D
HISTORICAL MAP ARCHIVES

