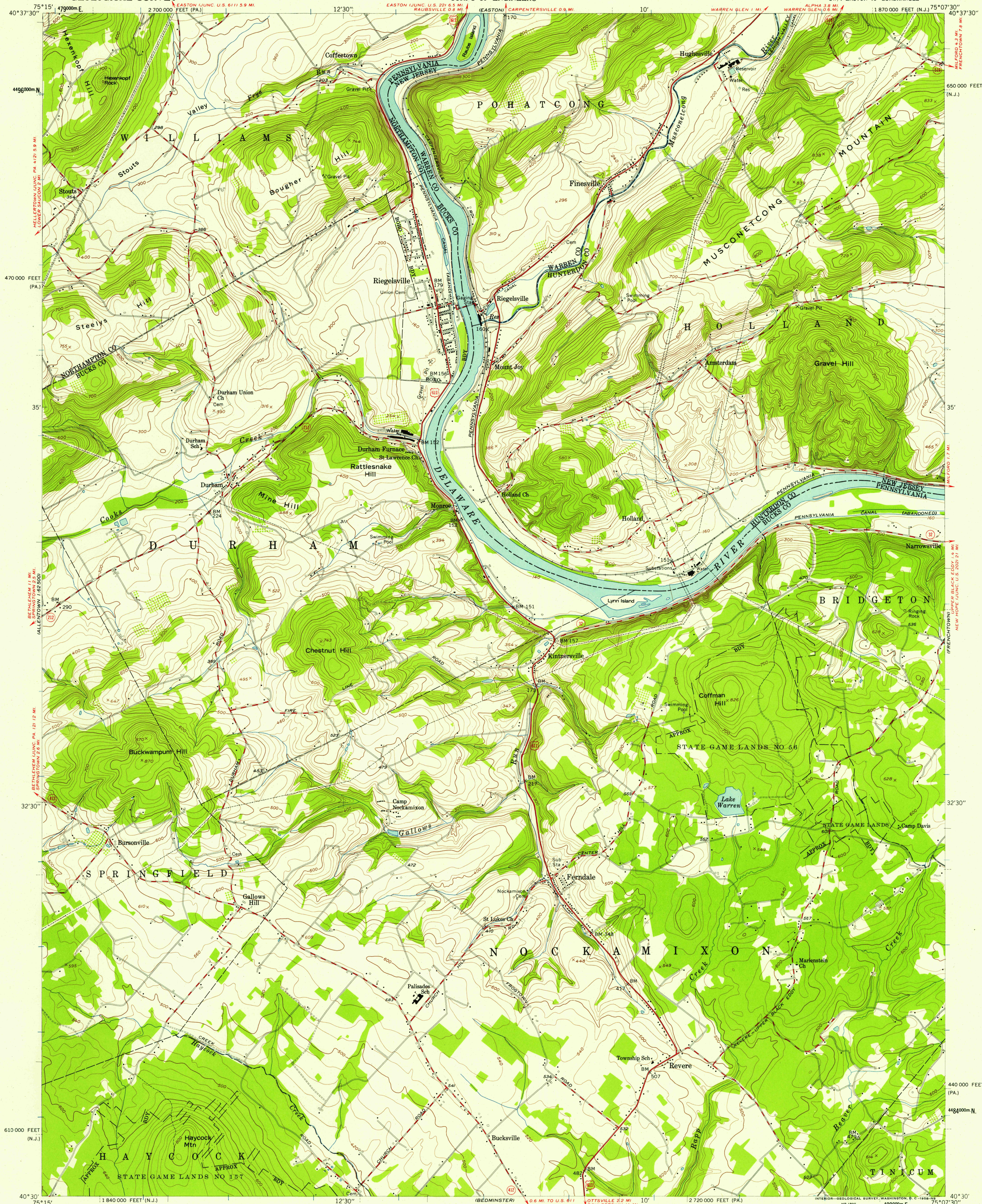


UNITED STATES
DEPARTMENT OF THE INTERIOR
GEOLOGICAL SURVEY

UNITED STATES
DEPARTMENT OF THE ARMY
CORPS OF ENGINEERS

RIEGELSVILLE QUADRANGLE
PENNSYLVANIA-NEW JERSEY
7.5 MINUTE SERIES (TOPOGRAPHIC)
SW/4 EASTON 15' QUADRANGLE



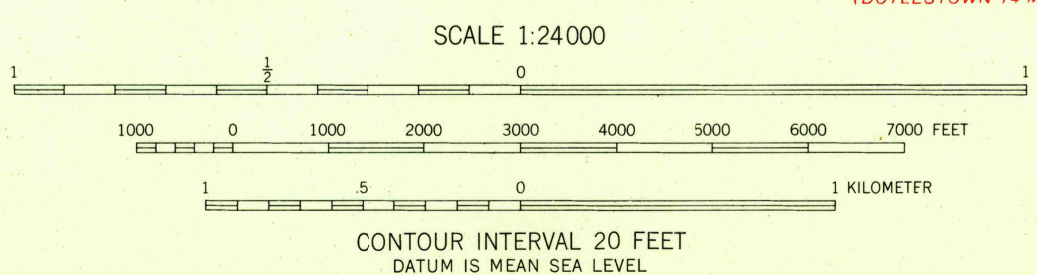
Maped by the Army Map Service
Edited and published by the Geological Survey
Control by USGS and USC&GS

Topography from aerial photographs by photogrammetric methods
Field check 1942. Culture revised by the Geological Survey 1956

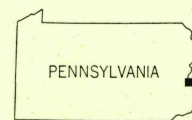
Polyconic projection. 1927 North American datum
10,000-foot grids based on Pennsylvania coordinate system,
south zone, and New Jersey coordinate system
1000-meter Universal Transverse Mercator grid ticks,
zone 18, shown in blue

Unchecked elevations are shown in brown

APPROXIMATE MEAN
DECLINATION, 1956



USGS
HISTORICAL FILE
TOPOGRAPHIC DIVISION



ROAD CLASSIFICATION
Heavy-duty ——— Light-duty ———
Medium-duty ——— Unimproved dirt ———
U.S. Route ——— State Route ———

RIEGELSVILLE, PA.—N. J.
SW/4 EASTON 15' QUADRANGLE
N4030—W7507.5/7.5

1956

U.S.G.S.
FILE COPY
TOPOGRAPHIC DIVISION

MAR 26 1958

3360