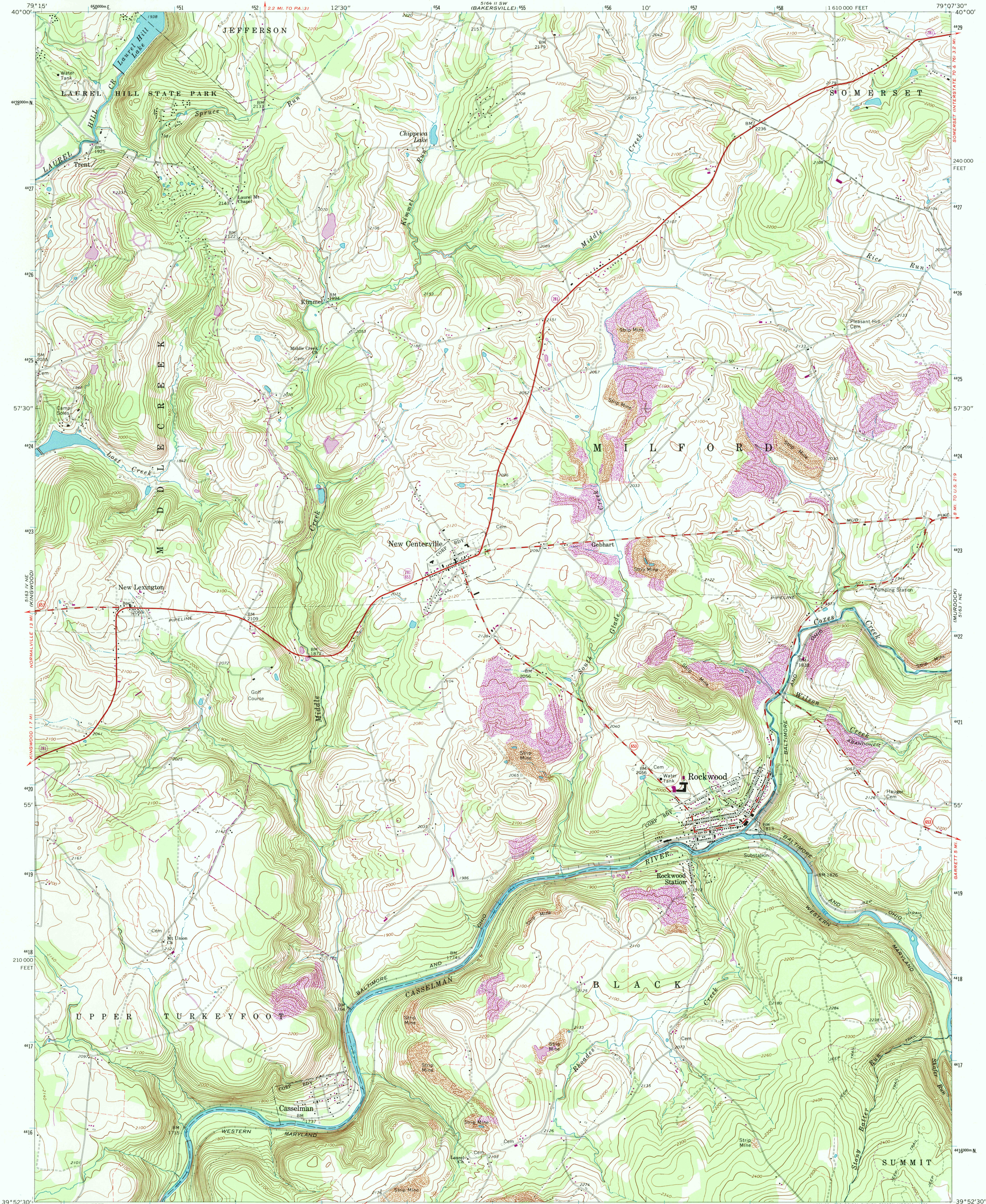
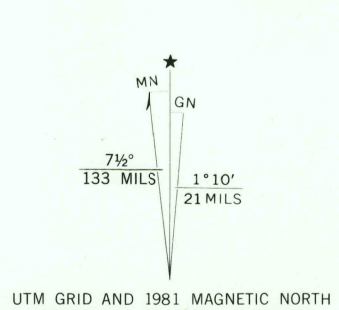


UNITED STATES
DEPARTMENT OF THE INTERIOR
GEOLOGICAL SURVEY

ROCKWOOD QUADRANGLE
PENNSYLVANIA—SOMERSET CO.
7.5 MINUTE SERIES (TOPOGRAPHIC)



Mapped, edited, and published by the Geological Survey
Control by USGS and NOS/NOAA
Topography by photogrammetric methods from aerial
photographs taken 1966. Field checked 1968
Polyconic projection. 10,000-foot grid ticks based on Pennsylvania
coordinate system, south zone. 1000-meter Universal Transverse
Mercator grid ticks, zone 17, shown in blue. 1927 North American
Datum. To place on the predicted North American Datum 1983
move the projection lines 5 meters south and 20 meters
west as shown by dashed corner ticks
Fine red dashed lines indicate selected fence and field lines where
generally visible on aerial photographs. This information is unchecked
There may be private holdings within the boundaries of
the National or State reservations shown on this map



SCALE 1:24,000
CONTOUR INTERVAL 20 FEET
NATIONAL GEODETIC VERTICAL DATUM OF 1929
THIS MAP COMPLIES WITH NATIONAL MAP ACCURACY STANDARDS
FOR SALE BY U.S. GEOLOGICAL SURVEY, RESTON, VIRGINIA 22092
A FOLDER DESCRIBING TOPOGRAPHIC MAPS AND SYMBOLS IS AVAILABLE ON REQUEST

USGS AND HISTORICAL
MAP ARCHIVES
JUL 16 1996
REC'D FILE COPY

ROAD CLASSIFICATION
Primary highway, all weather, Light duty road, all weather,
hard surface improved surface
Secondary highway, all weather, Unimproved road, fair or dry
hard surface weather
State Route

ROCKWOOD, PA.
N3952.5—W7907.5/7.5
1968
PHOTOREVISED 1981
DMA 5163 1 NW—SERIES V831

