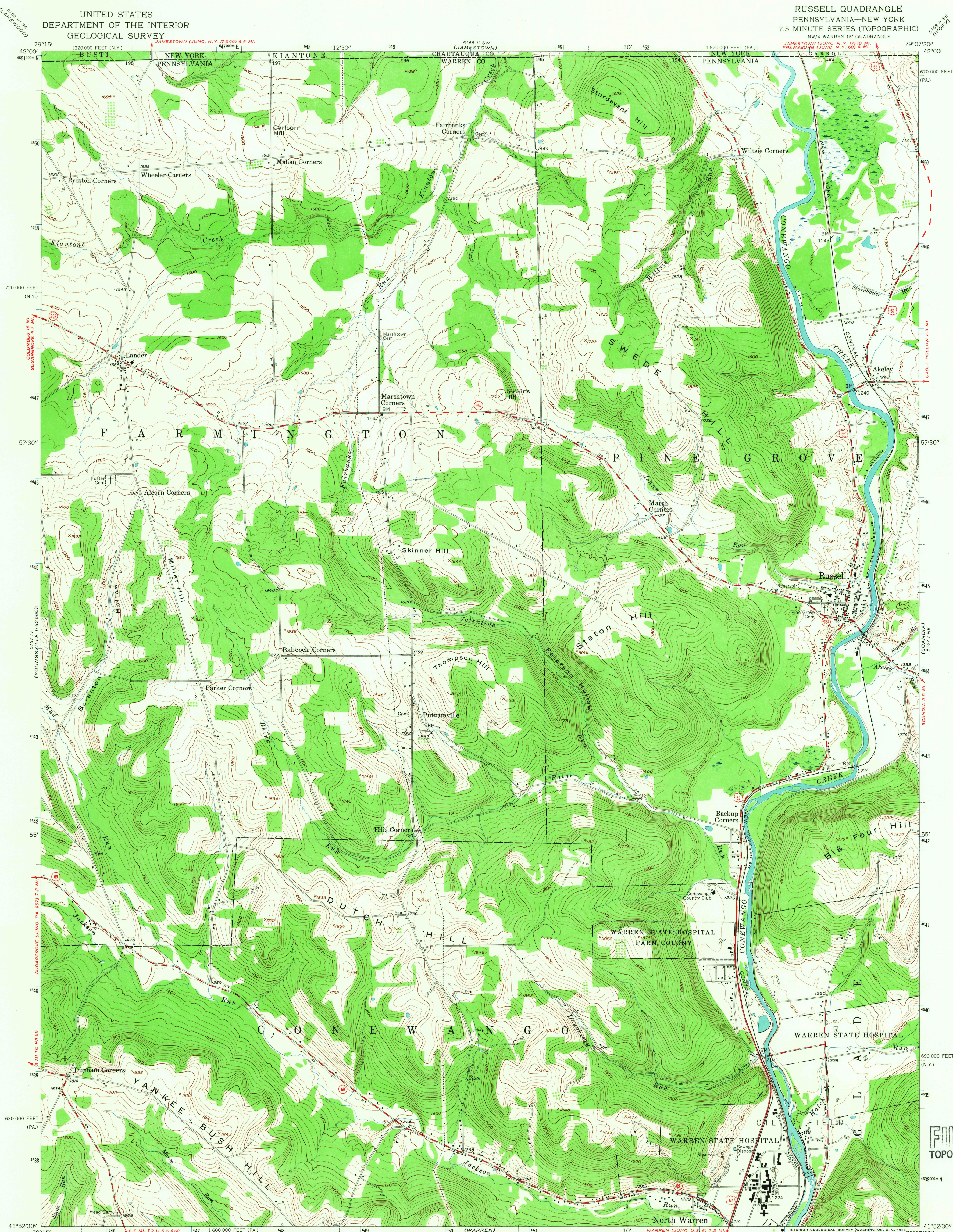


UNITED STATES  
DEPARTMENT OF THE INTERIOR  
GEOLOGICAL SURVEY

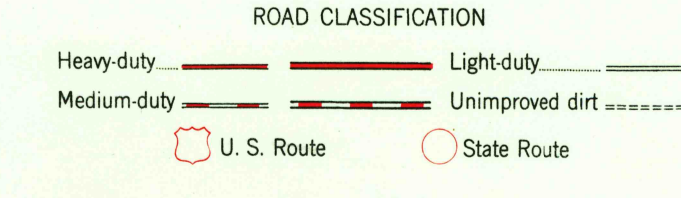
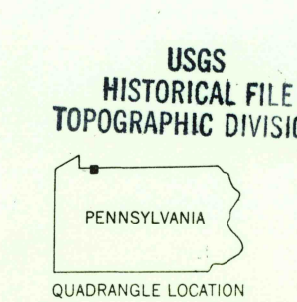
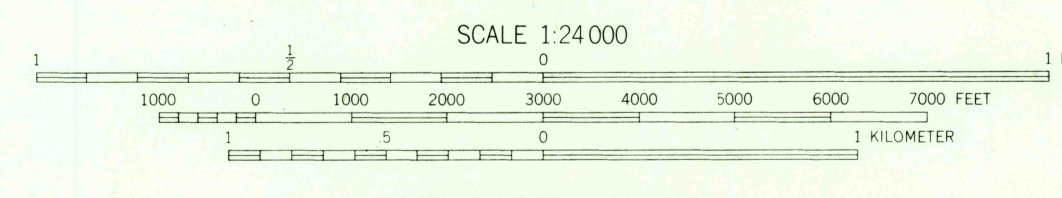
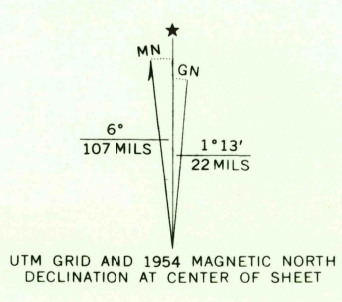
RUSSELL QUADRANGLE  
PENNSYLVANIA-NEW YORK  
7.5 MINUTE SERIES (TOPOGRAPHIC)  
NW/4 WARREN 15' QUADRANGLE



U.S.G.S.  
FILE COPY  
TOPOGRAPHIC DIVISION

Mapped, edited, and published by the Geological Survey

Control by USGS and USC&GS  
Topography from aerial photographs by photogrammetric methods. Aerial photographs taken 1953. Field check 1954  
Polyconic projection. 1927 North American datum  
10,000-foot grids based on Pennsylvania coordinate system, north zone, and New York coordinate system, west zone  
Unchecked elevations are shown in brown  
1000-meter Universal Transverse Mercator grid ticks, zone 17, shown in blue



RUSSELL, PA.-N.Y.  
NW/4 WARREN 15' QUADRANGLE  
N4152.5-W7907.5/7.5

1954  
AMS 5167.1 NW-SERIES V831

THIS MAP COMPLIES WITH NATIONAL MAP ACCURACY STANDARDS  
FOR SALE BY U.S. GEOLOGICAL SURVEY, WASHINGTON, D.C. 20242  
A FOLDER DESCRIBING TOPOGRAPHIC MAPS AND SYMBOLS IS AVAILABLE ON REQUEST

2430