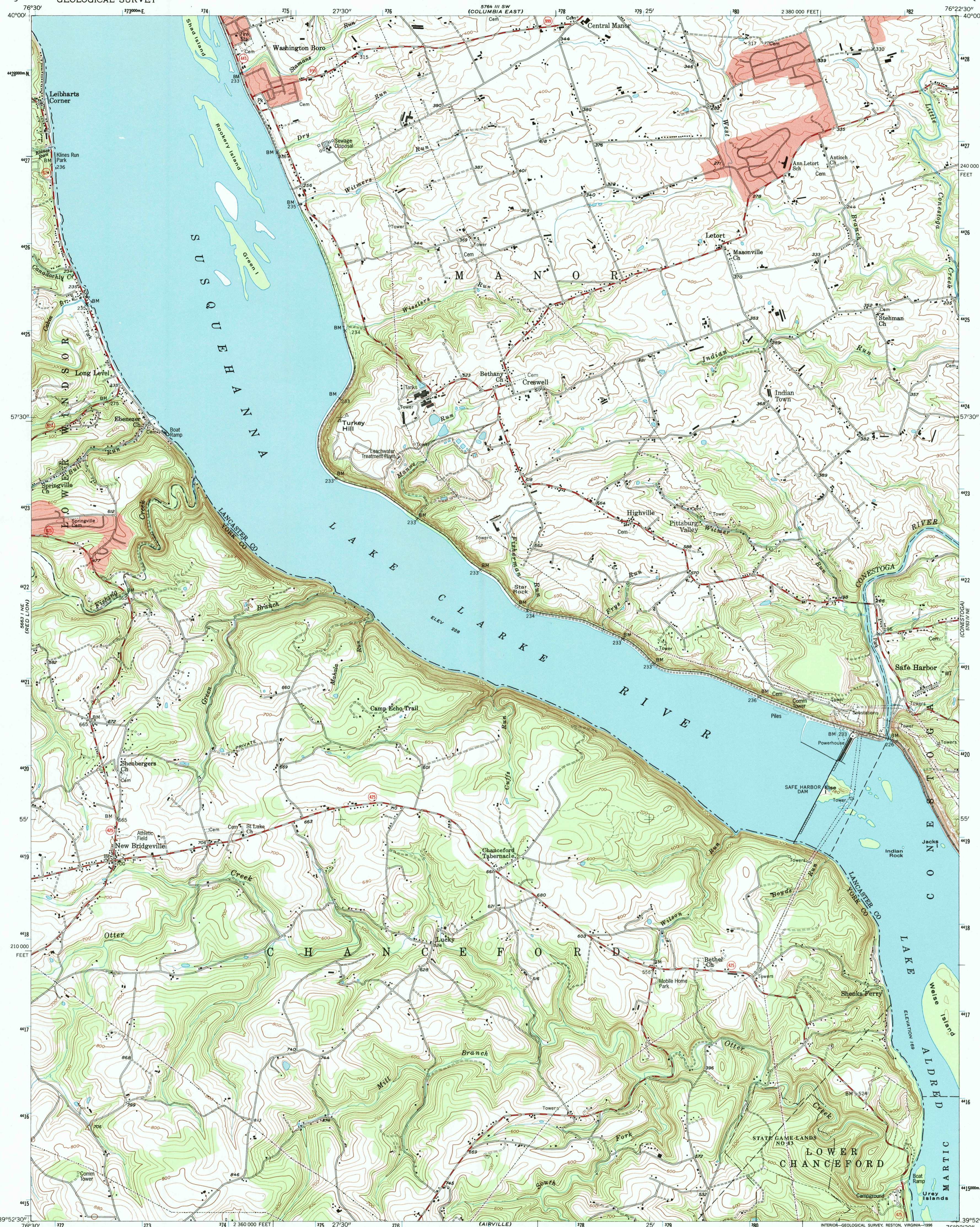
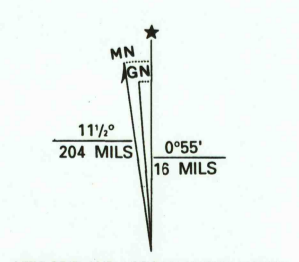


UNITED STATES  
DEPARTMENT OF THE INTERIOR  
GEOLOGICAL SURVEY

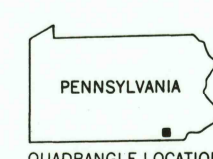
SAFE HARBOR QUADRANGLE  
PENNSYLVANIA  
7.5 MINUTE SERIES (TOPOGRAPHIC)



Produced by the United States Geological Survey  
in cooperation with Commonwealth of Pennsylvania agencies  
Compiled by photogrammetric methods from imagery dated 1952  
Field checked 1955. Revised from imagery dated 1992 and  
other sources. Field checked 1995. Map edited 1996  
North American Datum of 1927 (NAD 27). Projection and  
10 000-foot ticks: Pennsylvania coordinate system, south zone  
(Lambert conformal conic)  
Blue 1000-meter Universal Transverse Mercator ticks, zone 18  
North American Datum of 1983 (NAD 83) is shown by dashed  
corner ticks. The values of the shift between NAD 27 and NAD 83  
for 7.5-minute intersections are obtainable from National Geodetic  
Survey NADCON software  
There may be private inholdings within the boundaries of  
the National or State reservations shown on this map



SCALE 1:24 000  
1 000 000 FEET  
1 KILOMETER  
CONTOUR INTERVAL 20 FEET  
NATIONAL GEODETIC VERTICAL DATUM OF 1929  
THIS MAP COMPLIES WITH NATIONAL MAP ACCURACY STANDARDS  
FOR SALE BY U.S. GEOLOGICAL SURVEY  
DENVER, COLORADO 80225, OR RESTON, VIRGINIA 22092  
A FOLDER DESCRIBING TOPOGRAPHIC MAPS AND SYMBOLS IS AVAILABLE ON REQUEST



ROAD CLASSIFICATION  
Primary highway, hard surface  
Secondary highway, hard surface  
Interstate Route  
Light-duty road, hard or improved surface  
Unimproved road  
U. S. Route  
State Route

JUL 16 1996  
REC'D FILE COPY

SAFE HARBOR, PA  
39076-H4-TF-024  
1995  
DMA 5763 IV NW-SERIES V831

