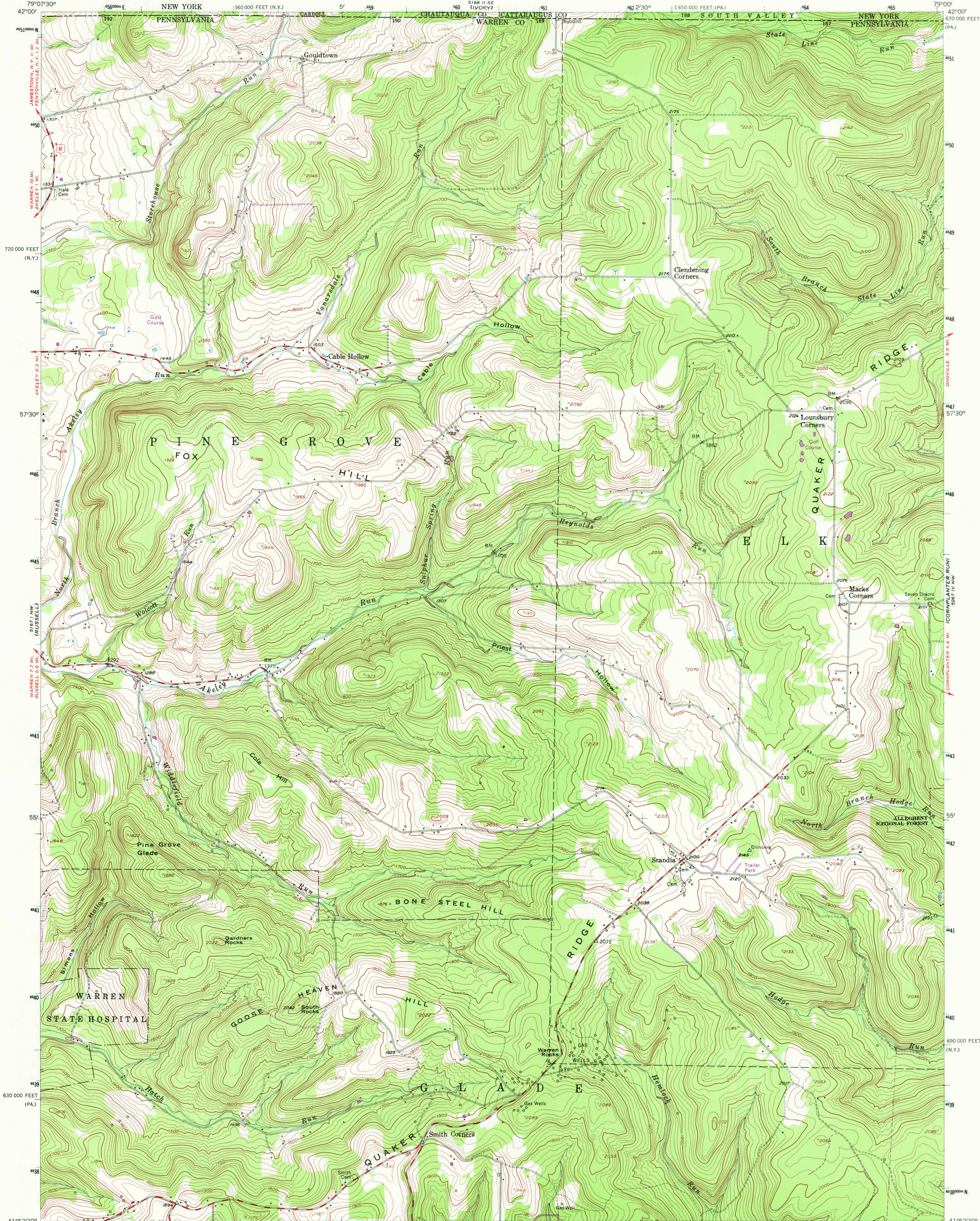


UNITED STATES  
DEPARTMENT OF THE INTERIOR  
GEOLOGICAL SURVEY

SCANDIA QUADRANGLE  
PENNSYLVANIA—NEW YORK  
7.5 MINUTE SERIES (TOPOGRAPHIC)



Mapped, edited, and published by the Geological Survey

Control by USGS and USC&GS

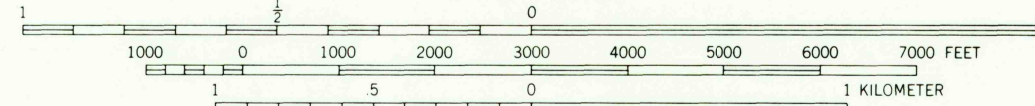
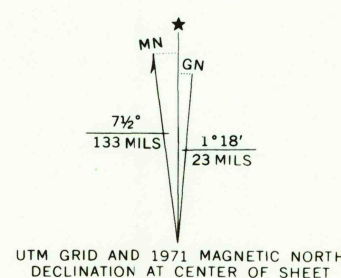
Topography from aerial photographs by multiplex methods  
Aerial photographs taken 1953. Field check 1954

Polyconic projection. 1927 North American datum  
10,000-foot grids based on Pennsylvania coordinate system,  
north zone, and New York coordinate system, west zone

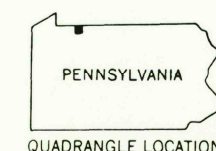
Unlabelled wells are oil wells

Unchecked elevations are shown in brown

1000-meter Universal Transverse Mercator grid ticks,  
zone 17, shown in blue



CONTOUR INTERVAL 20 FEET  
DATUM IS MEAN SEA LEVEL



ROAD CLASSIFICATION	
Heavy-duty	Light-duty
Medium-duty	Unimproved dirt
U. S. Route	State Route

USGS  
HISTORICAL FILE  
TOPOGRAPHIC DIVISION

SCANDIA, PA.—N. Y.

N 4152.5—W 7900/7.5

1954  
PHOTOREVISED 1971  
AMS 5167 1 NE—SERIES V831

THIS MAP COMPLIES WITH NATIONAL MAP ACCURACY STANDARDS  
FOR SALE BY U. S. GEOLOGICAL SURVEY, WASHINGTON, D. C. 20242  
A FOLDER DESCRIBING TOPOGRAPHIC MAPS AND SYMBOLS IS AVAILABLE ON REQUEST

Revisions shown in purple compiled in cooperation with  
State of Pennsylvania agencies from aerial photographs  
taken 1971. This information not field checked

NOV 16 1972

1970

NOV 16 1972