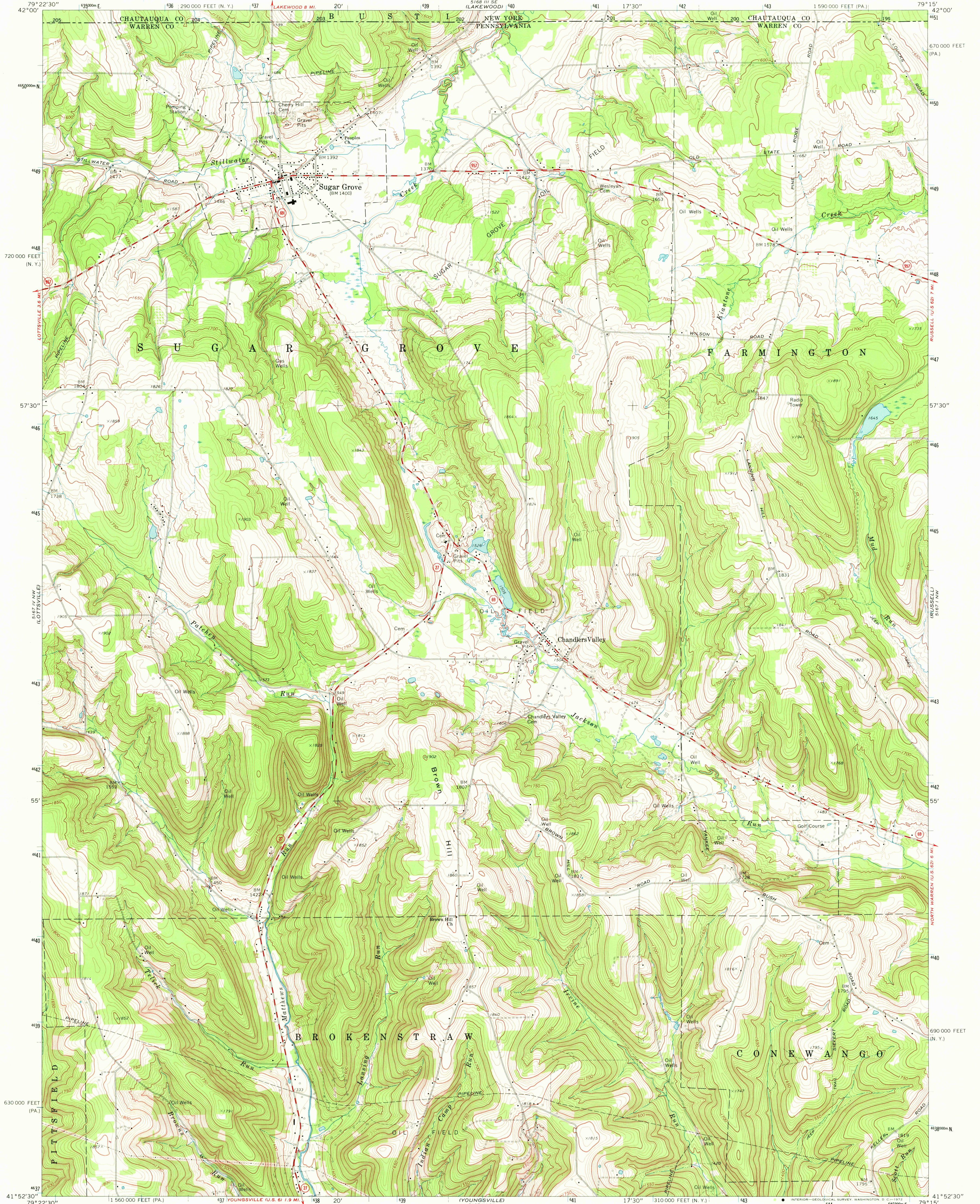


5167 IV NW
(PITTSBURGH)

5168 I SW
(JAMESTOWN)



Mapped, edited, and published by the Geological Survey

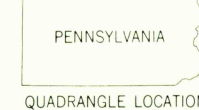
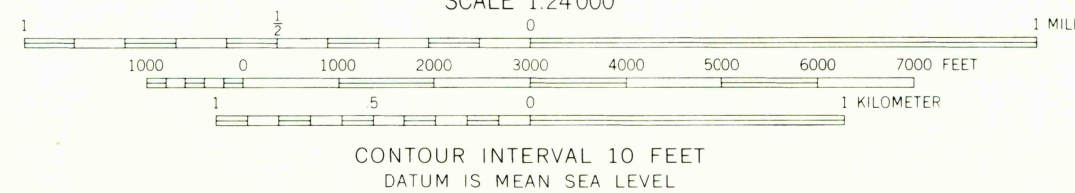
Control by USGS and USC&GS

Topography by photogrammetric methods from aerial photographs taken 1966. Field checked 1968

Polyconic projection. 1927 North American datum
10,000-foot grids based on Pennsylvania coordinate system, north zone, and New York coordinate system, west zone
1000-meter Universal Transverse Mercator grid ticks, zone 17, shown in blue

Fine red dashed lines indicate selected fence and field lines where generally visible on aerial photographs. This information is unchecked
Only selected wells shown in oil fields. Numerous wells omitted

UTM GRID AND 1968 MAGNETIC NORTH
DECLINATION AT CENTER OF SHEET



ROAD CLASSIFICATION
Primary highway, hard surface
Secondary highway, hard surface
Unimproved road
Interstate Route
U. S. Route
State Route

SUGAR GROVE, PA.-N. Y.
NE/4 YOUNGVILLE 15' QUADRANGLE
N4152.5-W7915/7.5

1968

AMS 5167 IV NE-SERIES V831

THIS MAP COMPLIES WITH NATIONAL MAP ACCURACY STANDARDS
FOR SALE BY U. S. GEOLOGICAL SURVEY, WASHINGTON, D. C. 20242
A FOLDER DESCRIBING TOPOGRAPHIC MAPS AND SYMBOLS IS AVAILABLE ON REQUEST

USGS
HISTORICAL FILE
TOPOGRAPHIC DIVISION

JUL 3 1972

4290