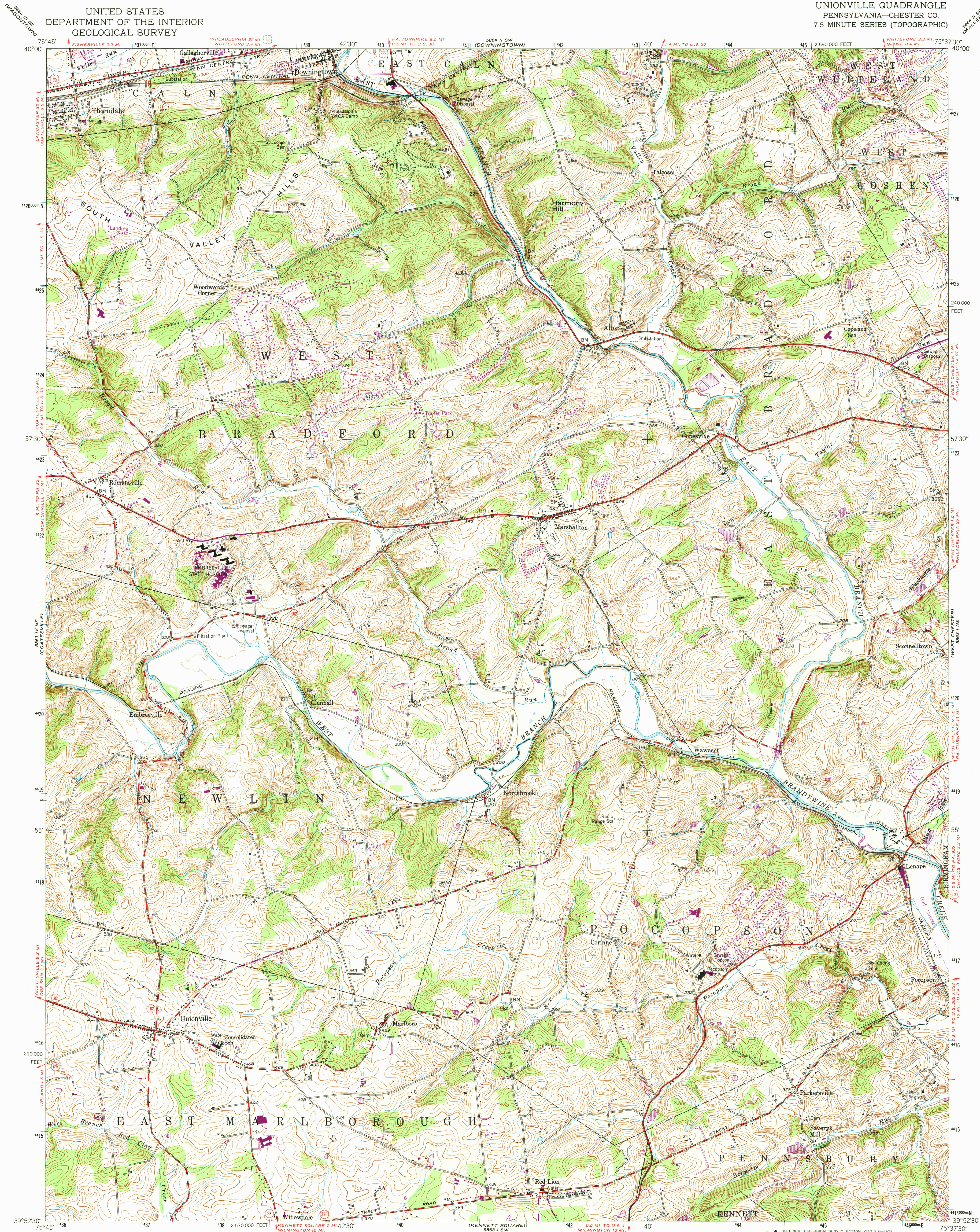


UNITED STATES  
DEPARTMENT OF THE INTERIOR  
GEOLOGICAL SURVEY

UNIONVILLE QUADRANGLE  
PENNSYLVANIA—CHESTER CO.  
7.5 MINUTE SERIES (TOPOGRAPHIC)



Mapped, edited, and published by the Geological Survey

Control by USGS and USC&GS

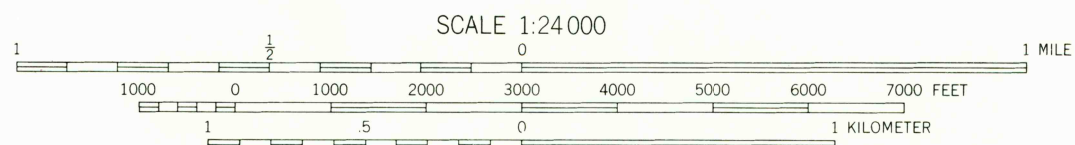
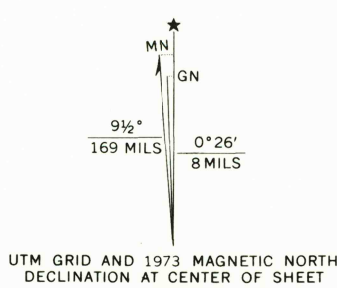
Topography from aerial photographs by Kelsh plotter

Aerial photographs taken 1950. Field check 1953

Polycyclic projection. 1927 North American datum  
10,000-foot grid based on Pennsylvania coordinate system,  
south zone

1000-meter Universal Transverse Mercator grid ticks,  
zone 18, shown in blue

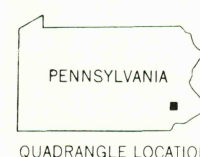
Revisions shown in purple compiled, in cooperation with  
State of Pennsylvania agencies, from aerial photographs  
taken 1968 and 1973. This information not field checked



CONTOUR INTERVAL 10 FEET  
NATIONAL GEODETIC VERTICAL DATUM OF 1929

THIS MAP COMPLIES WITH NATIONAL MAP ACCURACY STANDARDS  
FOR SALE BY U.S. GEOLOGICAL SURVEY, RESTON, VIRGINIA 22092  
A FOLDER DESCRIBING TOPOGRAPHIC MAPS AND SYMBOLS IS AVAILABLE ON REQUEST

ROAD CLASSIFICATION  
Heavy-duty ——— Light-duty ———  
Medium-duty ——— Unimproved dirt ———  
U.S. Route ——— State Route ———



USGS  
Historical File  
Topographic Division

UNIONVILLE, PA.

N 3952.5—W 7537.5/7.5

1953

PHOTOREVISION 1968 AND 1973  
AMS 5863 I NW—SERIES V831

JAN 24 1975

3570