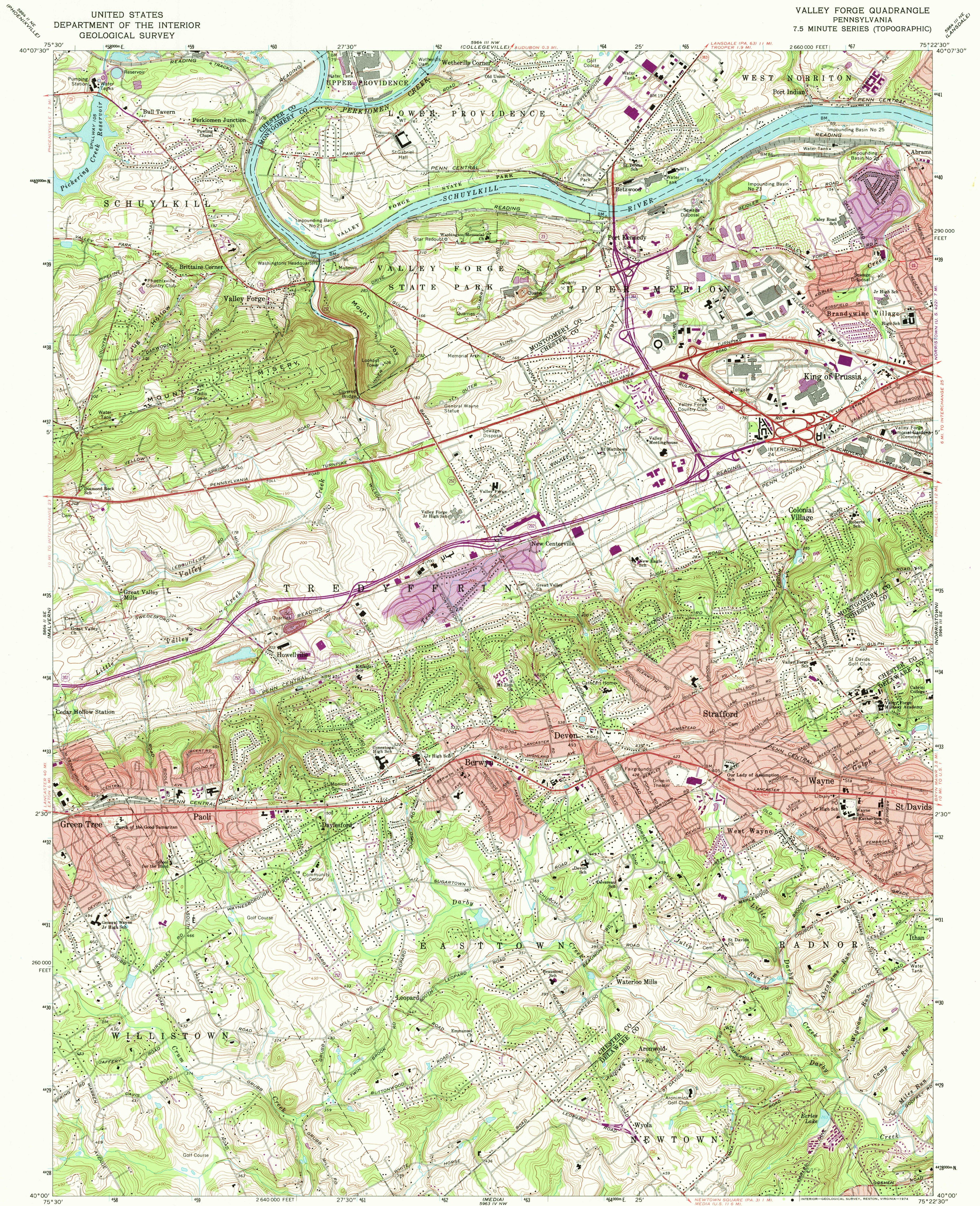


UNITED STATES  
DEPARTMENT OF THE INTERIOR  
GEOLOGICAL SURVEY

VALLEY FORGE QUADRANGLE  
PENNSYLVANIA  
7.5 MINUTE SERIES (TOPOGRAPHIC)



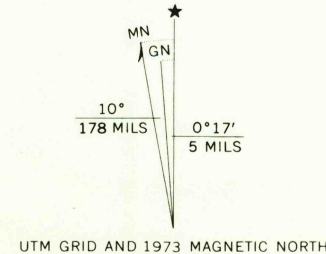
Mapped, edited, and published by the Geological Survey  
in cooperation with Pennsylvania Department of Internal  
Affairs, Topographic and Geologic Survey

Control by USGS, USC&GS, and USCE

Topography by photogrammetric methods from aerial photographs  
taken 1950. Field checked 1952. Revised from aerial  
photographs taken 1965. Field checked 1966

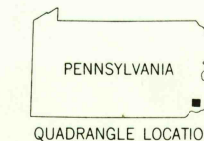
Polyconic projection. 1927 North American datum  
10,000-foot grid based on Pennsylvania coordinate system, south zone  
1000-meter Universal Transverse Mercator grid ticks,  
zone 18, shown in blue

Fine red dashed lines indicate selected fence and field lines where  
generally visible on aerial photographs. This information is unchecked  
Red tint indicates areas in which only landmark buildings are shown



SCALE 1:24,000  
1 1000 2000 3000 4000 5000 6000 7000 FEET  
1 5 10 KILOMETER  
CONTOUR INTERVAL 10 FEET  
DATUM IS MEAN SEA LEVEL

THIS MAP COMPLIES WITH NATIONAL MAP ACCURACY STANDARDS  
FOR SALE BY U.S. GEOLOGICAL SURVEY, WASHINGTON, D.C. 20542  
A FOLDER DESCRIBING TOPOGRAPHIC MAPS AND SYMBOLS IS AVAILABLE ON REQUEST



ROAD CLASSIFICATION  
Heavy-duty ——— Light-duty ———  
Medium-duty ——— Unimproved dirt ———  
Interstate Route U.S. Route State Route  
USGS  
Historical File VALLEY FORGE, PA.  
Topographic Division N4000—W7522.5/7.5

Revisions shown in purple compiled from aerial photographs  
taken 1973. This information not field checked  
Purple tint indicates extension of urban areas

1966  
PHOTOREVISED 1973  
AMS 5964 III SW-SERIES 7831

5870