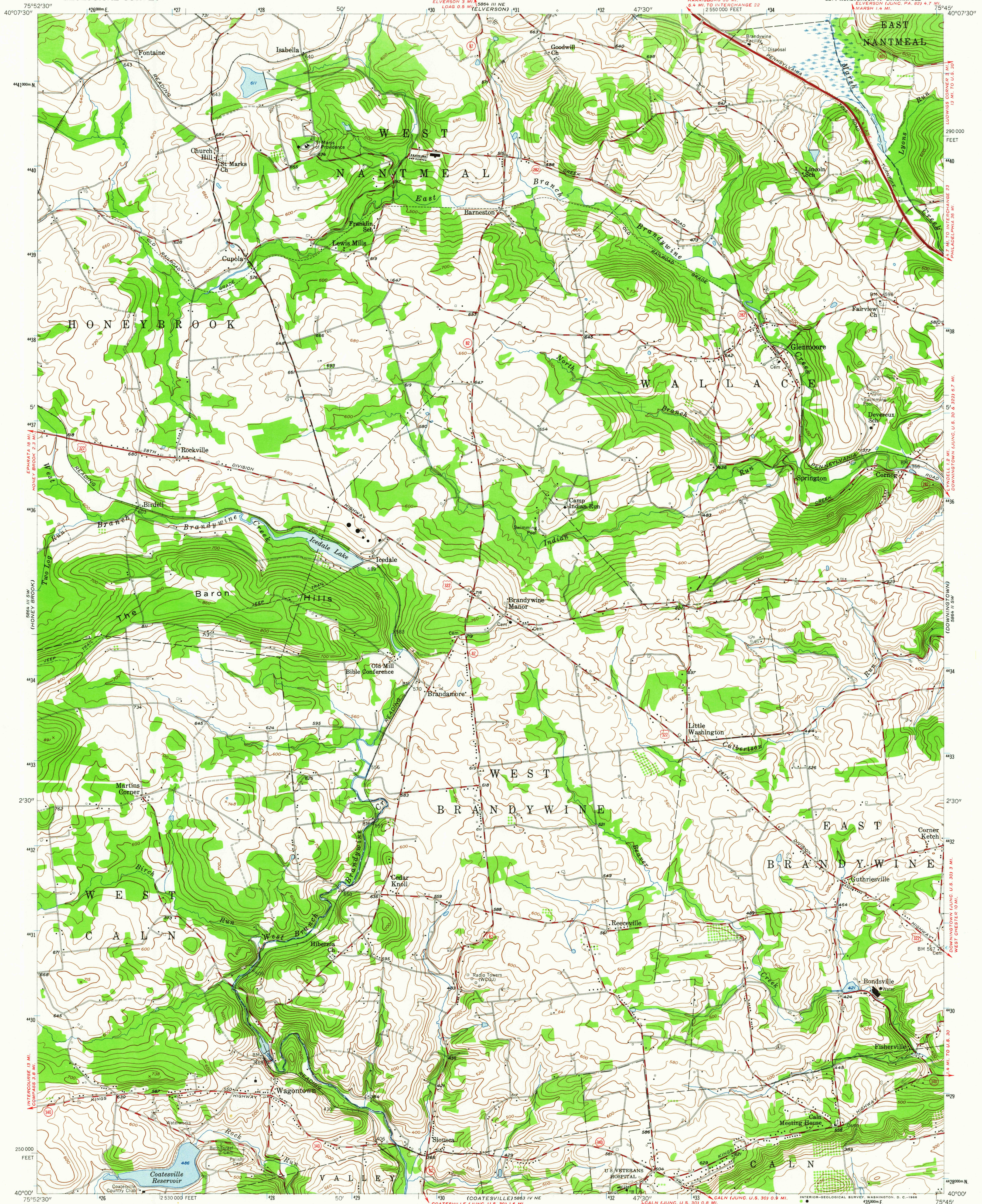


UNITED STATES
DEPARTMENT OF THE INTERIOR
GEOLOGICAL SURVEY

WAGONTOWN QUADRANGLE
PENNSYLVANIA—CHESTER CO.
7.5 MINUTE SERIES (TOPOGRAPHIC)
SE 1/4 HONEYBROOK 15' QUADRANGLE
ELVERSON (JUNG. PA. 82) 4.7 MI.
MARSH 1.4 MI.



Mapped, edited, and published by the Geological Survey

Control by USGS and USC&GS

Topography from aerial photographs by stereoplotter

Aerial photographs taken 1951. Field check 1956

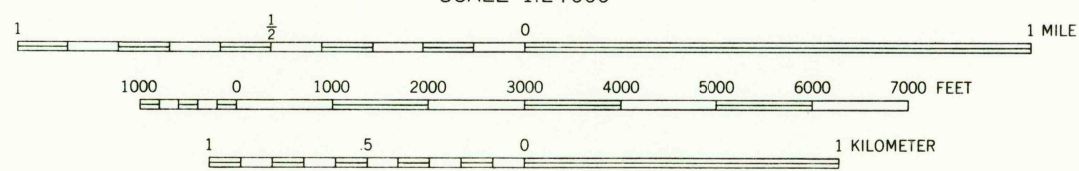
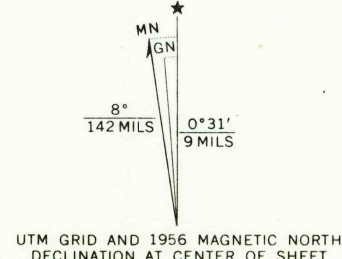
Polyconic projection. 1927 North American datum

10,000-foot grid based on Pennsylvania coordinate system,

south zone. 1,000-meter Universal Transverse Mercator

grid ticks, zone 18, shown in blue

Unchecked elevations are shown in brown

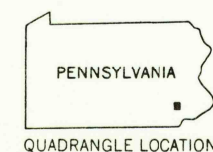


CONTOUR INTERVAL 20 FEET

DATUM IS MEAN SEA LEVEL

THIS MAP COMPLIES WITH NATIONAL MAP ACCURACY STANDARDS
FOR SALE BY U. S. GEOLOGICAL SURVEY, WASHINGTON, D. C. 20242
A FOLDER DESCRIBING TOPOGRAPHIC MAPS AND SYMBOLS IS AVAILABLE ON REQUEST

USGS
HISTORICAL FILE
TOPOGRAPHIC DIVISION



ROAD CLASSIFICATION
Heavy-duty ——— Light-duty ———
Medium-duty ——— Unimproved dirt ———
U. S. Route ——— State Route ———

U.S.G.S.
FILE COPY
TOPOGRAPHIC DIVISION

WAGONTOWN, PA.
SE 1/4 HONEYBROOK 15' QUADRANGLE
N 4000—W 7545/7.5

1956
AMS 5864 III SE—SERIES V831

2595
JAN 26 1966