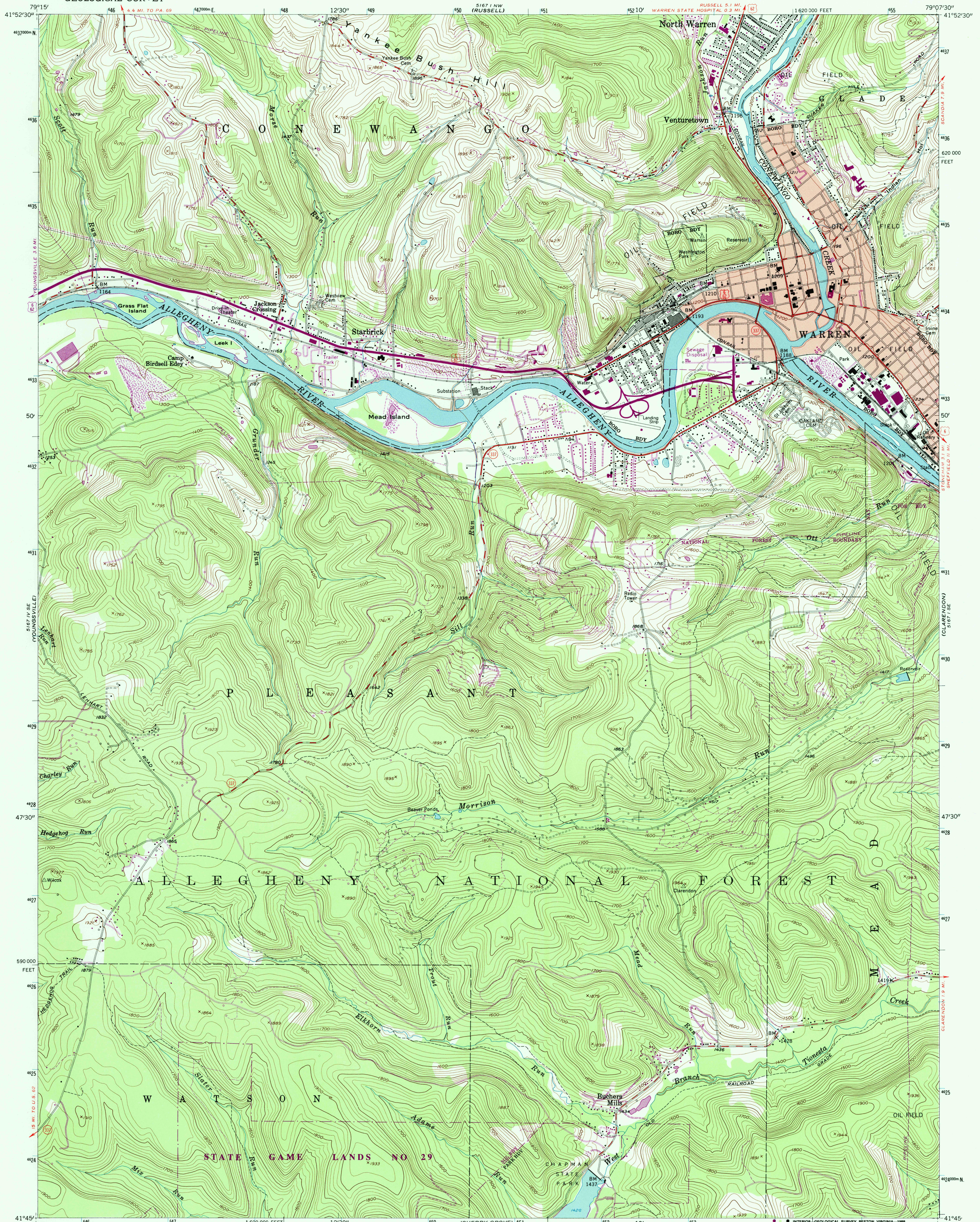


UNITED STATES
DEPARTMENT OF THE INTERIOR
GEOLOGICAL SURVEY

WARREN QUADRANGLE
PENNSYLVANIA—WARREN CO.
7.5 MINUTE SERIES (TOPOGRAPHIC)



Mapped, edited, and published by the Geological Survey
Control by USGS and NOS/NOAA

Topography by photogrammetric methods from aerial
photographs taken 1953. Field checked 1954

Polyconic projection. 10,000-foot grid ticks based on Pennsylvania
coordinate system, north zone. 1000-meter Universal Transverse

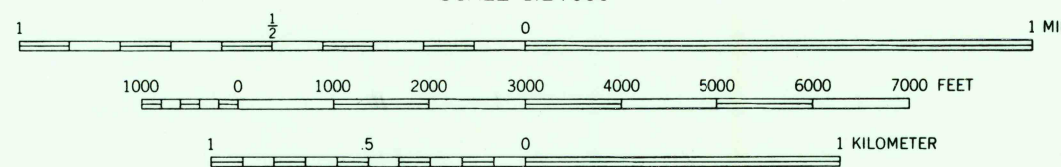
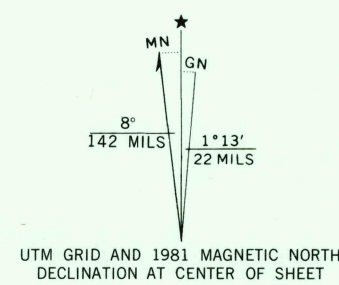
Mercator grid ticks, zone 17, shown in blue. 1927 North
American Datum. To place on the predicted North American

Datum 1983 move the projection lines 2 meters south and 20
meters west as shown by dashed corner ticks

Red tint indicates areas in which only landmark buildings are shown
Unlabelled wells are oil wells

Oil and gas wells omitted in labeled oil field areas
Unchecked elevations are shown in brown

There may be private inholding within the boundaries of the
National or State reservations shown on this map



CONTOUR INTERVAL 20 FEET
NATIONAL GEODETIC VERTICAL DATUM OF 1929



ROAD CLASSIFICATION	
Heavy-duty	Light-duty
Medium-duty	Unimproved dirt
U.S. Route	State Route

WARREN, PA.

41079-G2-TF-024

1954
PHOTOGRAPHED 1981
DMA 5167 1 SW-SERIES V831

THIS MAP COMPLIES WITH NATIONAL MAP ACCURACY STANDARDS
FOR SALE BY U.S. GEOLOGICAL SURVEY
DENVER, COLORADO 80225, OR RESTON, VIRGINIA 22092

A FOLDER DESCRIBING TOPOGRAPHIC MAPS AND SYMBOLS IS AVAILABLE ON REQUEST

Revisions shown in purple and woodland compiled in
cooperation with Commonwealth of Pennsylvania agencies
from aerial photographs taken 1977 and other sources
This information not field checked. Map edited 1981

NOV 22 1983
REC'D FILE COPY