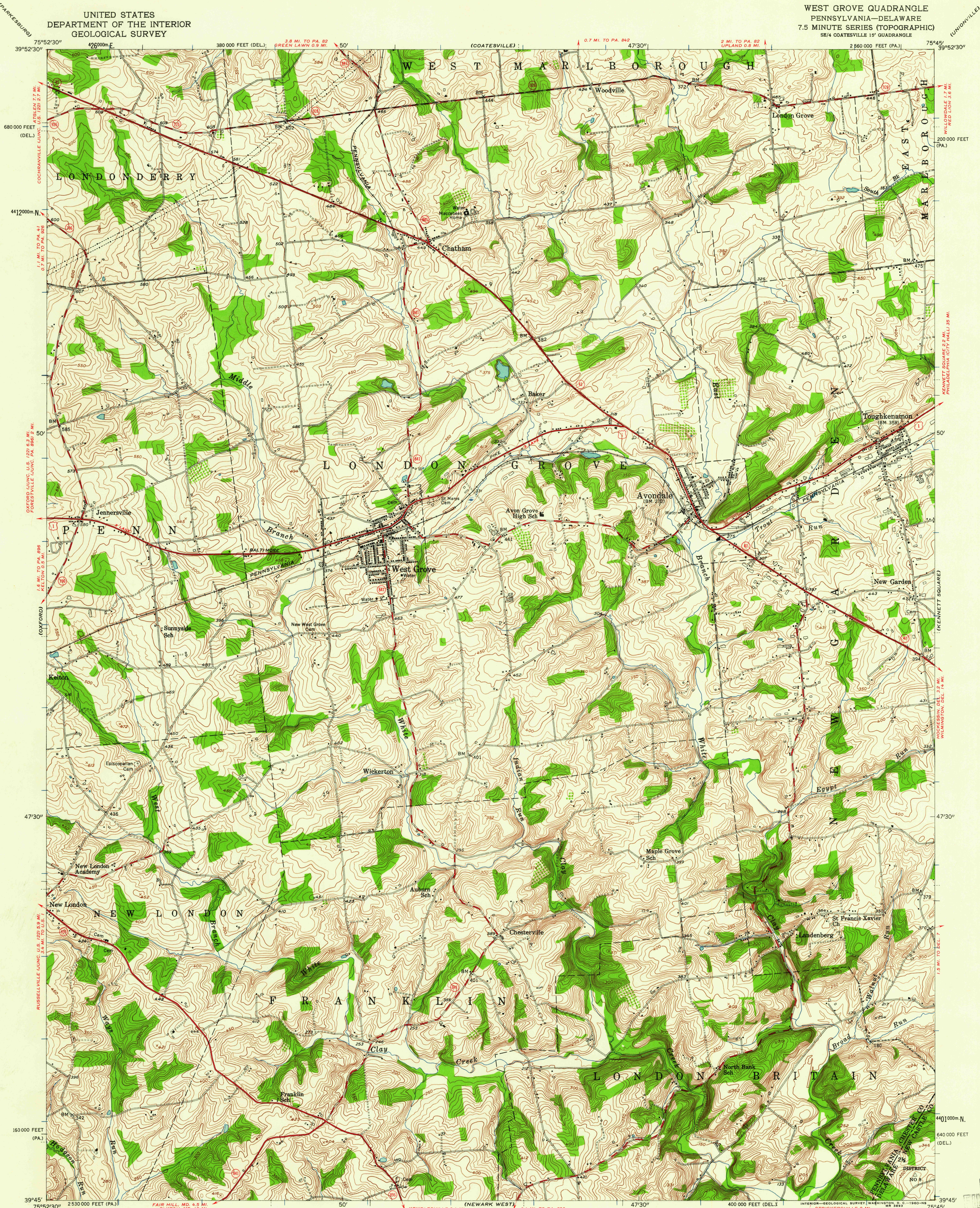
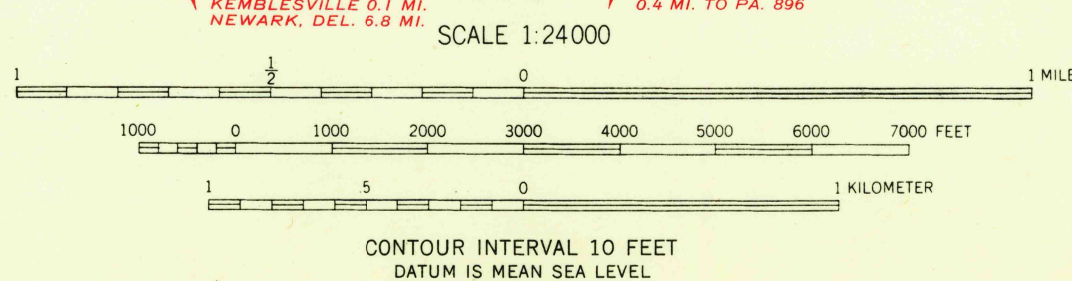


UNITED STATES  
DEPARTMENT OF THE INTERIOR  
GEOLOGICAL SURVEY

WEST GROVE QUADRANGLE  
PENNSYLVANIA-DELAWARE  
7.5 MINUTE SERIES (TOPOGRAPHIC)  
SE/4 COATESVILLE 15' QUADRANGLE

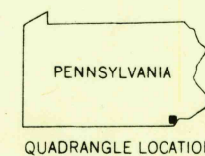


Mapped, edited, and published by the Geological Survey  
Control by USGS and USC&GS  
Topography from aerial photographs by stereophotogrammetric methods. Aerial photographs taken 1950. Field check 1953  
Polyconic projection. 1927 North American datum  
10,000-foot grids based on Pennsylvania coordinate system, south zone, and Delaware coordinate system  
1000-meter Universal Transverse Mercator grid ticks, zone 18, shown in blue  
Unchecked elevations are shown in brown



USGS  
HISTORICAL FILE  
TOPOGRAPHIC DIVISION

ROAD CLASSIFICATION  
Heavy-duty ——— Light-duty ———  
Medium-duty ——— Unimproved dirt ———  
U.S. Route ——— State Route ———



WEST GROVE, PA.—DEL.  
SE/4 COATESVILLE 15' QUADRANGLE  
N 3945—W 7545/7.5

1953

THIS MAP COMPLIES WITH NATIONAL MAP ACCURACY STANDARDS  
FOR SALE BY U. S. GEOLOGICAL SURVEY, WASHINGTON 25, D. C.  
A FOLDER DESCRIBING TOPOGRAPHIC MAPS AND SYMBOLS IS AVAILABLE ON REQUEST

U.S.G.S.  
FILE COPY  
TOPOGRAPHIC DIVISION

DEC - 7 1960  
3515