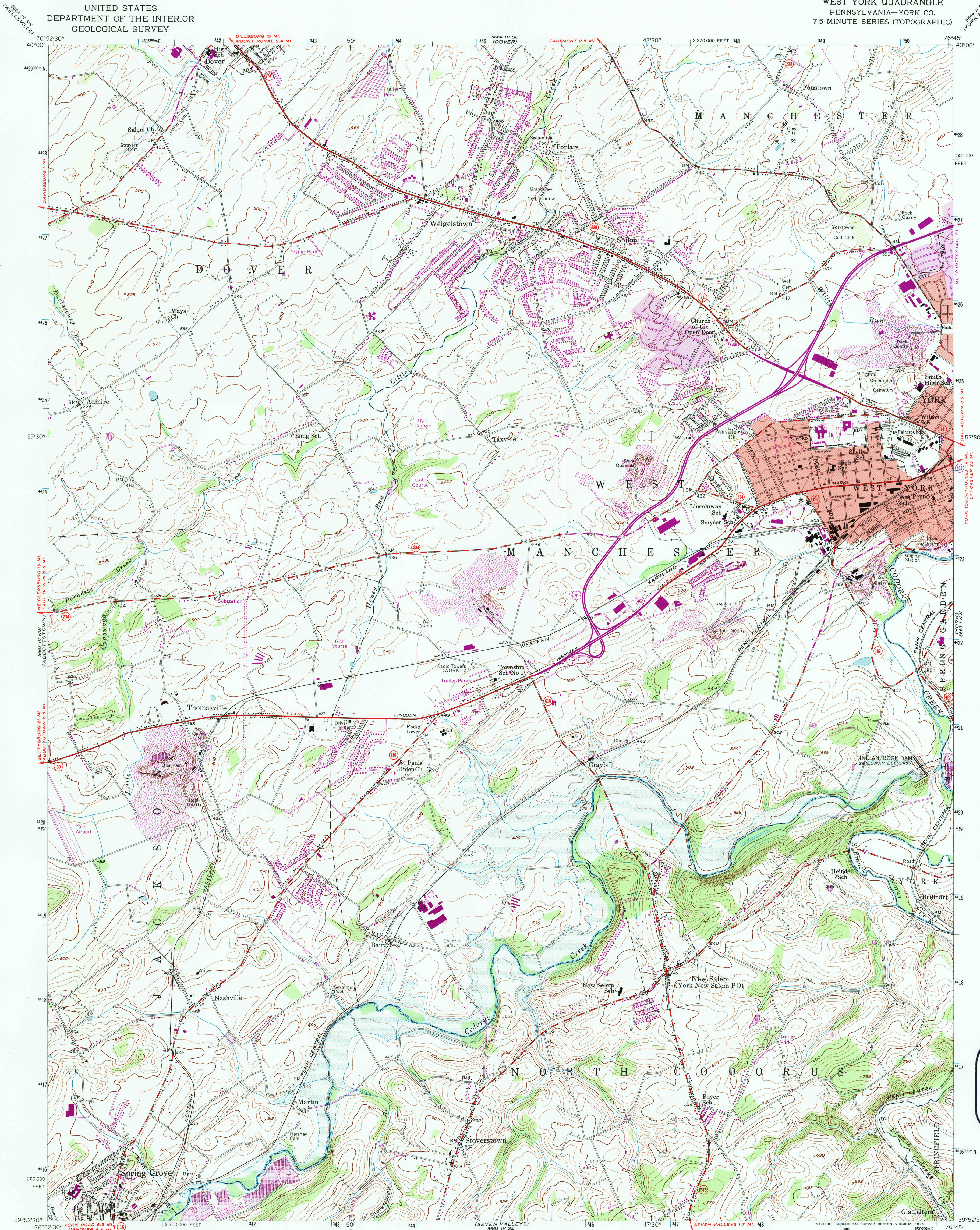
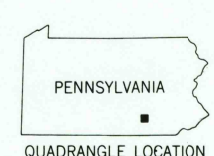
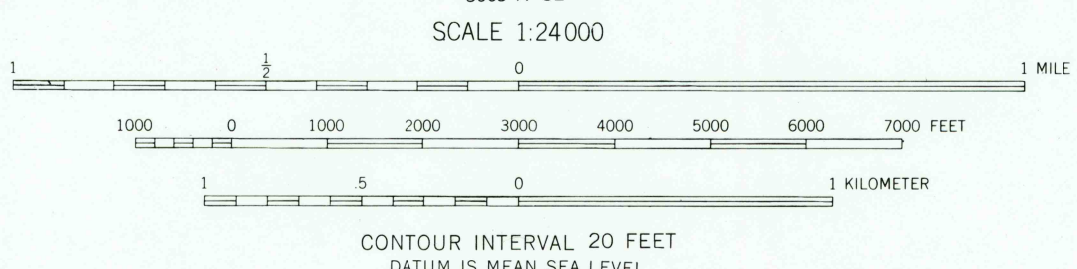
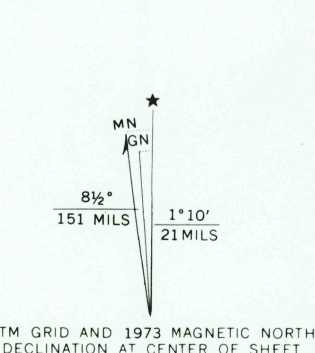


UNITED STATES  
DEPARTMENT OF THE INTERIOR  
GEOLOGICAL SURVEY

WEST YORK QUADRANGLE  
PENNSYLVANIA—YORK CO.  
7.5 MINUTE SERIES (TOPOGRAPHIC)



Maped, edited, and published by the Geological Survey  
Control by USGS, USC&GS, and USCE  
Topography from aerial photographs by photogrammetric  
methods. Aerial photographs taken 1952. Field check 1954  
Polyconic projection. 1927 North American datum  
10,000-foot grid based on Pennsylvania coordinate system,  
south zone  
Area covered by dashed light-blue pattern  
is subject to controlled inundation  
Red tint indicates areas in which only  
landmark buildings are shown  
1000-meter Universal Transverse Mercator grid ticks,  
zone 18, shown in blue



ROAD CLASSIFICATION  
Heavy-duty ——— Light-duty ———  
Medium-duty ——— Unimproved dirt ———  
U. S. Route ——— State Route ———

WEST YORK, PA.  
N 3952.5—W 7645.7/7.5  
1954  
PHOTOREVISED 1968 AND 1973  
AMS 5663 IV NE—SERIES V831

THIS MAP COMPLIES WITH NATIONAL MAP ACCURACY STANDARDS  
FOR SALE BY U. S. GEOLOGICAL SURVEY, RESTON, VIRGINIA 22092  
A FOLDER DESCRIBING TOPOGRAPHIC MAPS AND SYMBOLS IS AVAILABLE ON REQUEST

Revisions shown in purple compiled in cooperation with  
State of Pennsylvania agencies from aerial photographs  
taken 1968 and 1973. This information not field checked  
Purple tint indicates extension of urban areas

USGS AND HISTORICAL  
MAP ARCHIVES  
AUG 1 1995  
REC'D FILE COPY

