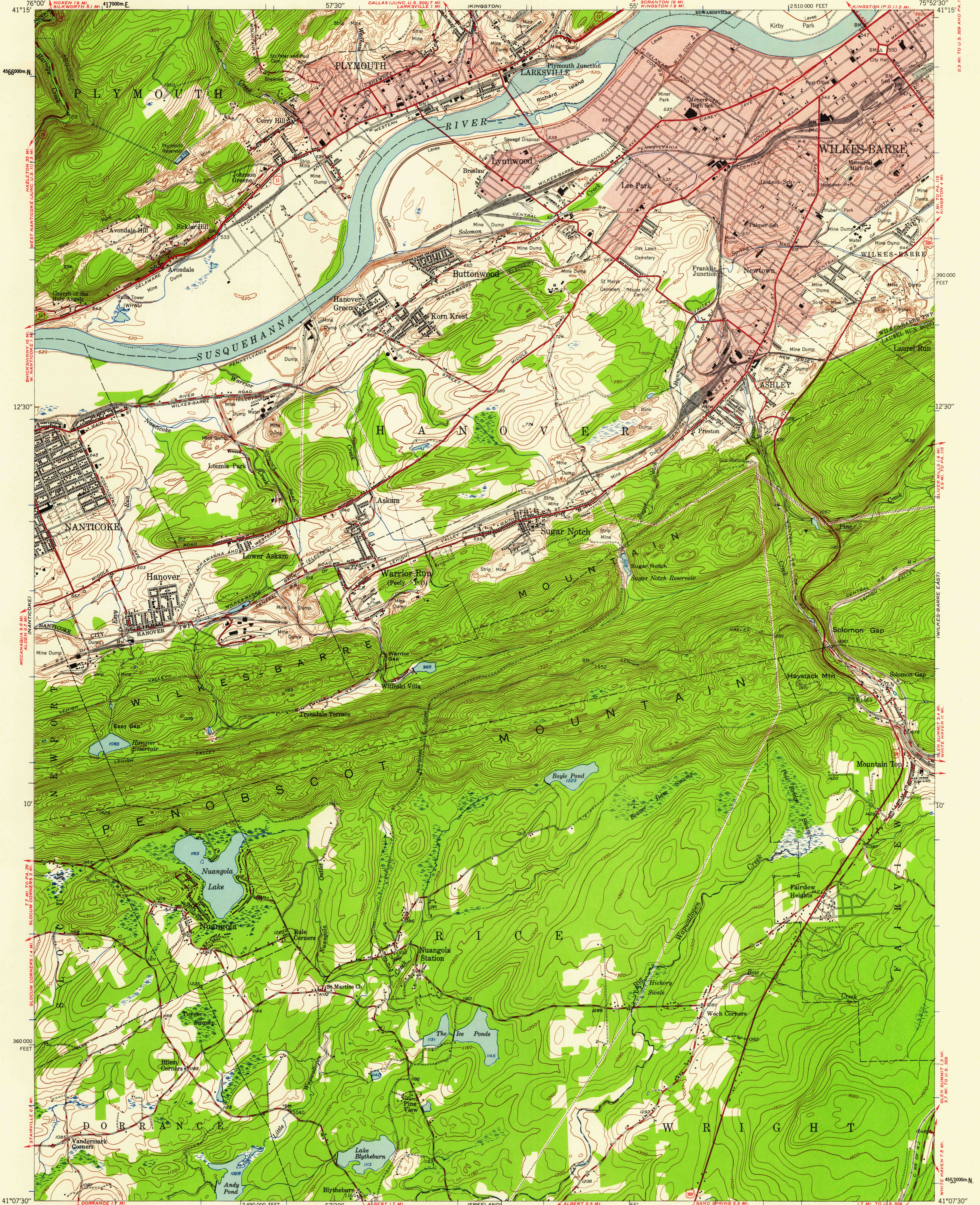


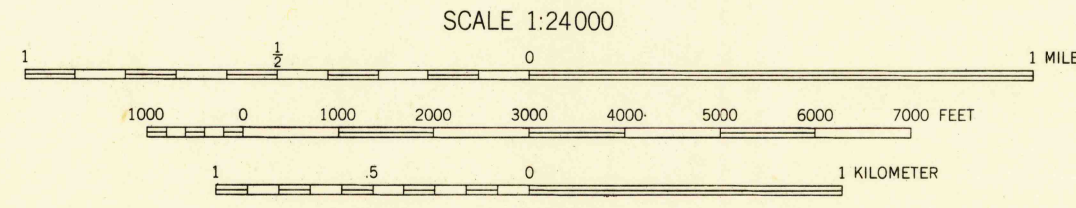
UNITED STATES
DEPARTMENT OF THE INTERIOR
GEOLOGICAL SURVEY

WILKES-BARRE WEST QUADRANGLE
PENNSYLVANIA-LUZERNE CO.
7.5 MINUTE SERIES (TOPOGRAPHIC)
NW 1/4 WILKES-BARRE 15' QUADRANGLE



Mapped, edited, and published by the Geological Survey
Control by USGS and USC&GS
Topography from aerial photographs by multiplex methods
Aerial photographs taken 1942. Field check 1947
Polyconic projection. 1927 North American datum
10,000-foot grid based on Pennsylvania coordinate system,
north zone
Red tint indicates areas in which only
landmark buildings are shown
Contours in strip mine and mine dump areas
compiled from 1942 photography
1000-meter Universal Transverse Mercator grid ticks,
zone 18, shown in blue

TRUE NORTH
MAGNETIC NORTH
APPROXIMATE MEAN
DECLINATION, 1947



CONTOUR INTERVAL 20 FEET
DATUM IS MEAN SEA LEVEL

THIS MAP COMPLIES WITH NATIONAL MAP ACCURACY STANDARDS
FOR SALE BY U. S. GEOLOGICAL SURVEY, WASHINGTON 25, D. C.
A FOLDER DESCRIBING TOPOGRAPHIC MAPS AND SYMBOLS IS AVAILABLE ON REQUEST

USGS
HISTORICAL FILE
TOPOGRAPHIC DIVISION

ROAD CLASSIFICATION
HARD-SURFACE ALL WEATHER ROADS
Heavy-duty ——— 4 LANE 16 LANE
Medium-duty ——— 4 LANE 16 LANE
Loose-surface, graded, or narrow hard-surface ———
U. S. Route State Route
DRY WEATHER ROADS
Improved dirt ———
Unimproved dirt ———

WILKES-BARRE WEST, PA.
NW 1/4 WILKES-BARRE 15' QUADRANGLE
N4107.5-W7552.5/7.5
1947

FILE COPY
U.S.G.S.
TOPOGRAPHIC DIVISION

SEP 25 1958
2835