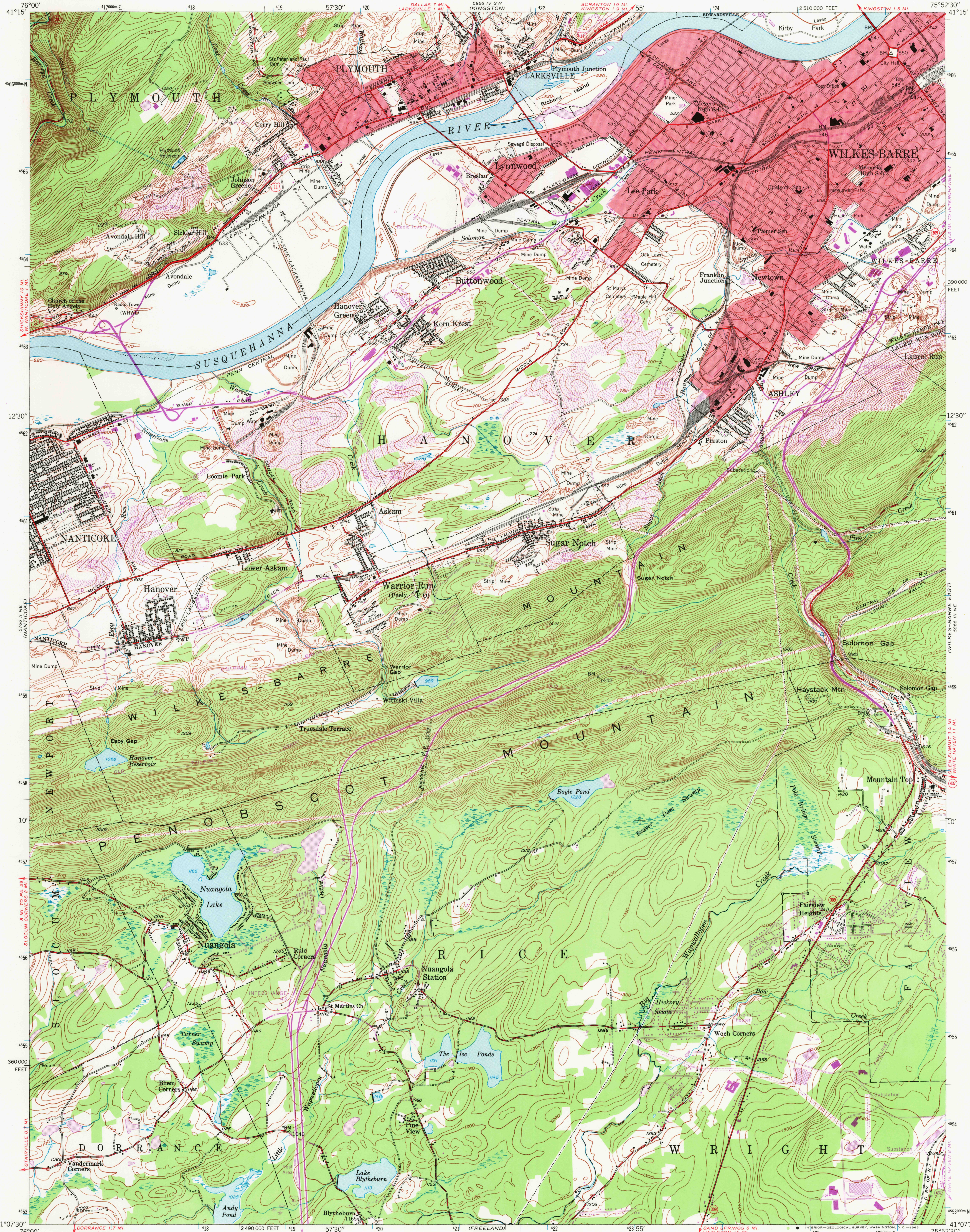
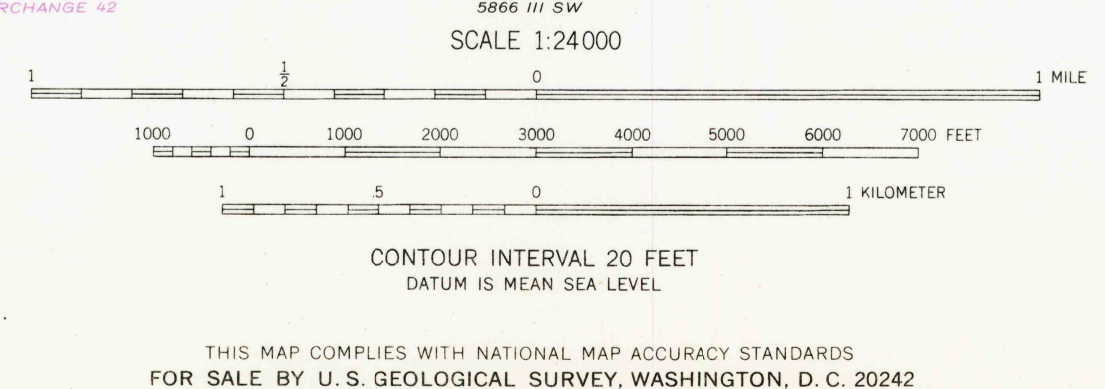
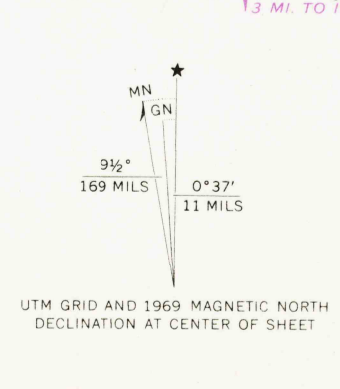


UNITED STATES
DEPARTMENT OF THE INTERIOR
GEOLOGICAL SURVEY

WILKES-BARRE WEST QUADRANGLE
PENNSYLVANIA-LUZERNE CO.
7.5 MINUTE SERIES (TOPOGRAPHIC)
NW 1/4 WILKES-BARRE 15' QUADRANGLE



Maped, edited, and published by the Geological Survey
Control by USGS and USC&GS
Topography by photogrammetric methods from aerial photographs
taken 1942. Field checked 1947
Polyconic projection. 1927 North American datum
10,000-foot grid based on Pennsylvania coordinate system, north zone
1000-meter Universal Transverse Mercator grid ticks, zone 18,
shown in blue
Red tint indicates areas in which only landmark buildings are shown
Revisions shown in purple compiled in cooperation with
State of Pennsylvania agencies, from aerial photographs taken 1969
This information not field checked



USGS
HISTORICAL FILE
TOPOGRAPHIC DIVISION

ROAD CLASSIFICATION
Heavy-duty ——— Light-duty ———
Medium-duty ——— Unimproved dirt ———
Interstate Route ——— U.S. Route ——— State Route ———

U.S.G.S.
FILE COPY
TOPOGRAPHIC DIVISION

WILKES-BARRE WEST, PA.
NW 1/4 WILKES-BARRE 15' QUADRANGLE
N4107.5-W7552.5/75
1947
PHOTOGRAPHED 1969
AMS 5866 III NW—SERIES V831

3255
NOV 10 1969