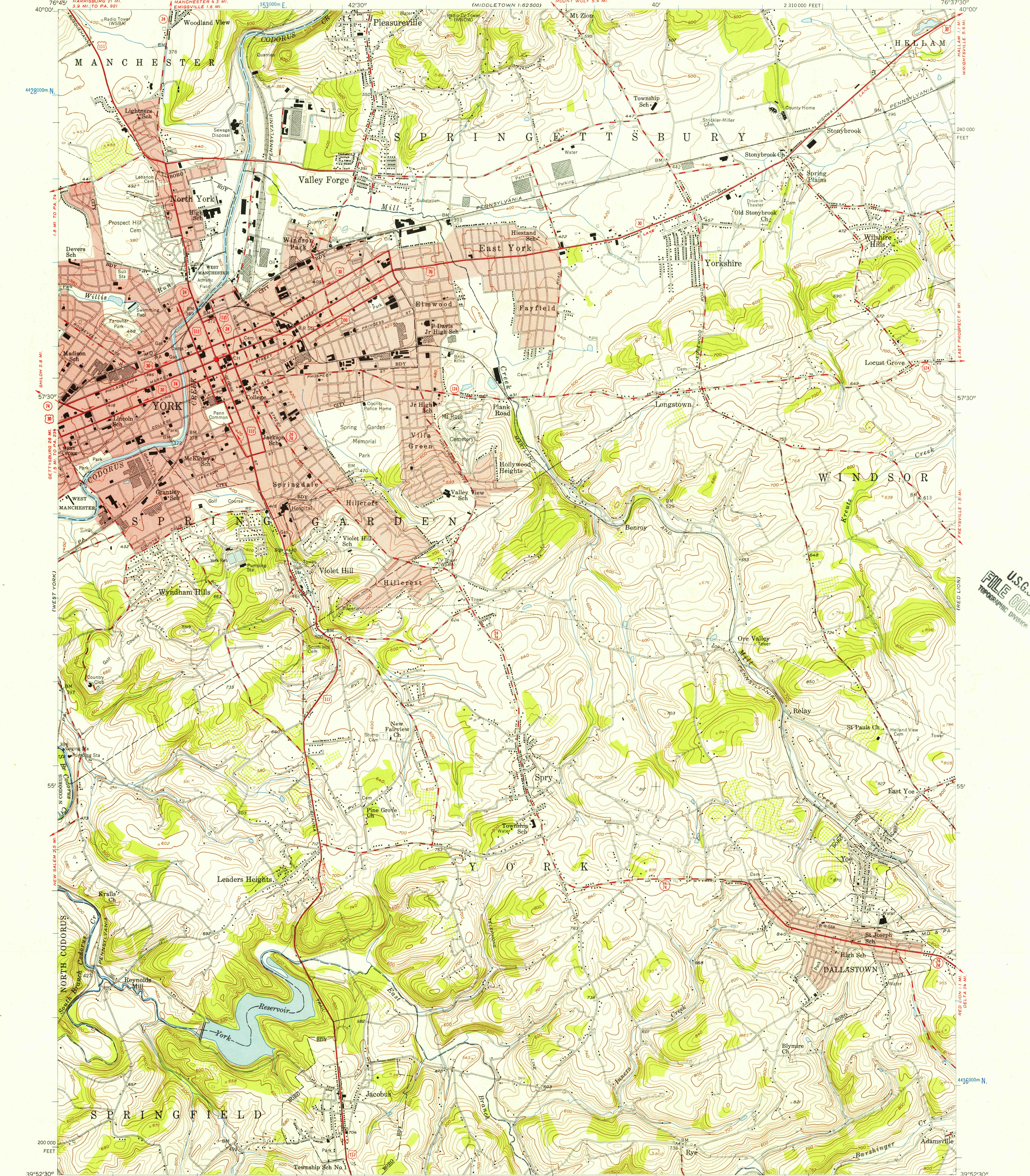


(NEW CUMBERLAND)
1:62,500

UNITED STATES
DEPARTMENT OF THE INTERIOR
GEOLOGICAL SURVEY

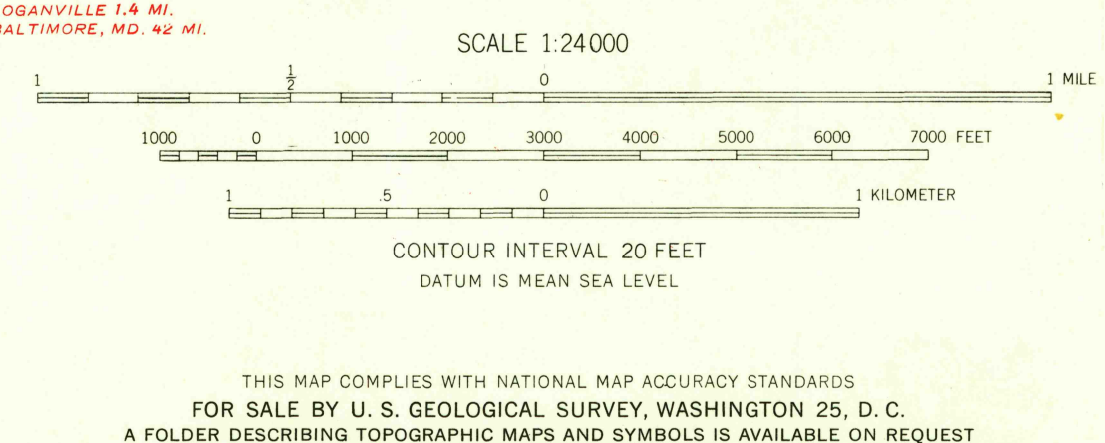
YORK QUADRANGLE
PENNSYLVANIA—YORK CO.
7.5 MINUTE SERIES (TOPOGRAPHIC)
NW/4 YORK 15' QUADRANGLE

(MIDDLETOWN)
1:62,500



Mapped, edited, and published by the Geological Survey
Control by USGS, USC&GS, and USCE
Topography from aerial photographs by photogrammetric
methods. Aerial photographs taken 1952. Field check 1954
Polyconic projection. 1927 North American datum
10,000-foot grid based on Pennsylvania coordinate system,
south zone
1000 meter Universal Transverse Mercator Grid ticks,
zone 18, shown in blue
Red tint indicates areas in which only
landmark buildings are shown
Unchecked elevations are shown in brown

APPROXIMATE MEAN
DECLINATION, 1954



USGS
HISTORICAL FILE
TOPOGRAPHIC DIVISION

ROAD CLASSIFICATION
Heavy-duty ——— Light-duty ———
Medium-duty ——— Unimproved dirt ———
U. S. Route ——— State Route ———

YORK, PA.
NW/4 YORK 15' QUADRANGLE
N 3952.5 — W 7637.5 / 7.5
1954

U.S.G.S.
FILE COPY
TOPOGRAPHIC DIVISION