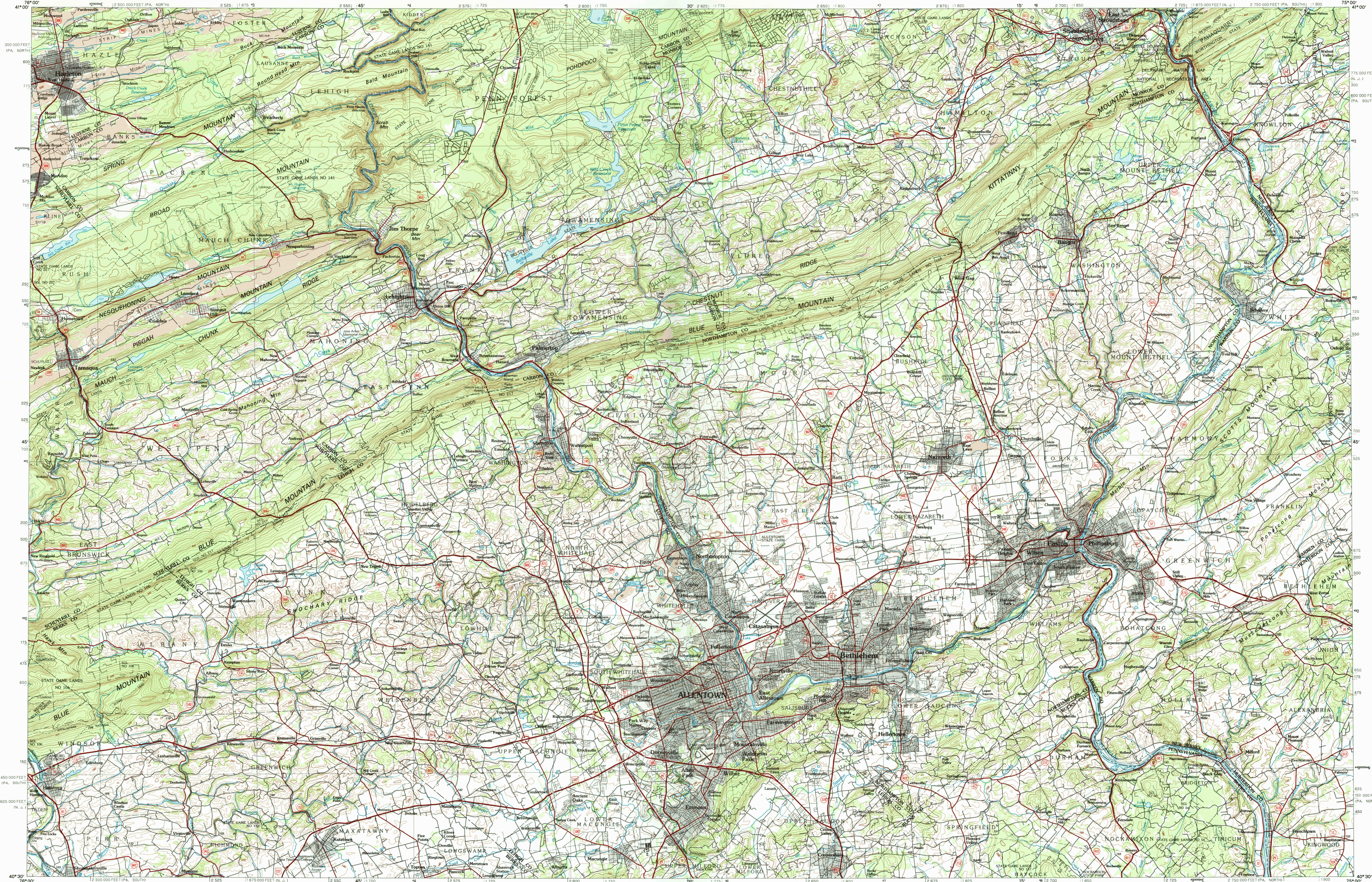


ALLENTOWN, PENNSYLVANIA—NEW JERSEY

30 X 60 MINUTE SERIES (TOPOGRAPHIC)



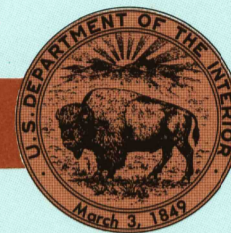
Allentown
PENNSYLVANIA
NEW JERSEY

1:100 000-scale metric
topographic map



30 X 60 MINUTE QUADRANGLE
SHOWING

- Contours and elevations in meters
- Highways, roads and other manmade structures
- Water features
- Woodland areas
- Geographic names



GEOLOGICAL SURVEY

1984

Produced by the United States Geological Survey
Compiled from USGS 1:24 000-scale topographic maps dated 1970-1984. Planimetry revised from aerial photographs taken 1981 and other source data. Revised information not field checked. Map edited 1984
Projection and 10 000-meter grid, zone 18: Universal Transverse Mercator. 25 000-foot grid ticks based on Pennsylvania coordinate system, south and north zones, and New Jersey coordinate system. 1927 North American Datum
To place on the predicted North American Datum 1983 move the projection lines 6 meters south and 31 meters west
There may be private inholdings within the boundaries of the National or State reservations shown on this map

CONTOUR INTERVAL 20 METERS
NATIONAL GEODETIC VERTICAL DATUM OF 1929
ELEVATIONS SHOWN TO THE NEAREST METER

THIS MAP COMPLIES WITH NATIONAL MAP ACCURACY STANDARDS

FOR SALE BY U.S. GEOLOGICAL SURVEY
P.O. BOX 25286, DENVER, COLORADO 80225

CONVERSION TABLE		DECLINATION DIAGRAM	ADJOINING MAPS				
Meters	Feet		1	2	3	4	5
1	3.2808		1	2	3	4	5
2	6.5617		1	2	3	4	5
3	9.8425		1	2	3	4	5
4	13.1234		1	2	3	4	5
5	16.4042		1	2	3	4	5
6	19.6850		1	2	3	4	5
7	22.9658		1	2	3	4	5
8	26.2466		1	2	3	4	5
9	29.5274		1	2	3	4	5
10	32.8084		1	2	3	4	5
To convert meters to feet multiply by 3.2808		UTM grid convergence (GN) and 1984 magnetic declination (MN) at center of map. Diagram is approximate.	1	2	3	4	5
To convert feet to meters multiply by 0.3048			1	2	3	4	5

RECEIVED
MAR 3 1 1999
ISBN 0-107-46774-2
9 780607 467765

USGS NMD
HISTORICAL MAP ARCHIVES
Topographic Map Symbols

Primary highway, hard surface	Secondary highway, hard surface	Light duty road, principal street, hard or improved surface	Other road or street, not	Road marker: Interstate, U. S., State	Bridge: overpass, underpass	Tunnel: road, railroad	Built up area, locality, elevation	Airport: landing field, landing strip	National boundary	State boundary	County boundary	National or State reservation boundary	Land grant boundary	U. S. public lands survey: range, township, section	Range, township, section line: protracted	Power transmission line: pipeline	Dam: dam with lock	Cemetery, building	Wetland: water, wetland, spring	Mine shaft: adit or cave, mine, quarry; gravel pit	Campground; picnic area; U. S. location monument	Ruin; cliff dwelling	Distorted surface: strip mine, lava, sand	Contours: index, intermediate; supplementary	Bathymetric contours: index, intermediate	Stream, lake: perennial, intermittent	Rapids, large and small; falls, large and small	Area to be submerged; marsh, swamp	Land subject to controlled inundation; woodland	Sand, mangrove	Drainage: viewed
-------------------------------	---------------------------------	---	---------------------------	---------------------------------------	-----------------------------	------------------------	------------------------------------	---------------------------------------	-------------------	----------------	-----------------	--	---------------------	---	---	-----------------------------------	--------------------	--------------------	---------------------------------	--	--	----------------------	---	--	---	---------------------------------------	---	------------------------------------	---	----------------	------------------

A pamphlet describing topographic maps is available on request

INTERIOR—GEOLOGICAL SURVEY, RESTON, VIRGINIA—1988

SCALE 1:100 000

1 CENTIMETER ON THE MAP REPRESENTS 1 KILOMETER ON THE GROUND
CONTOUR INTERVAL 20 METERS

ALLENTOWN, PENNSYLVANIA—NEW JERSEY

40075-E1-TM-100

1984