

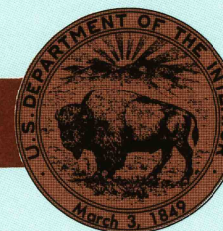
Allentown  
PENNSYLVANIA  
NEW JERSEY

1:100 000-scale metric  
topographic map



30 X 60 MINUTE QUADRANGLE  
SHOWING

- Contours and elevations  
in meters
- Highways, roads and other  
manmade structures
- Water features
- Woodland areas
- Geographic names



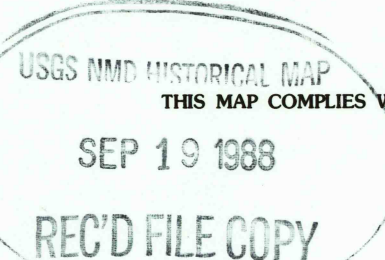
GEOLOGICAL SURVEY

1984

Produced by the United States Geological Survey  
Compiled from USGS 1:24 000-scale topographic maps dated  
1970-1984. Planimetry revised from aerial photographs taken  
1981 and other source data. Revised information not field  
checked. Map edited 1984.

Projection and 10 000-meter grid, zone 18: Universal Transverse  
Mercator. 25 000-foot grid ticks based on Pennsylvania coordinate  
system, south and north zones, and New Jersey coordinate  
system. 1927 North American Datum  
To place on the predicted North American Datum 1983 move the  
projection lines 6 meters south and 31 meters west.  
There may be private inholdings within the boundaries of the  
National or State reservations shown on this map.

CONTOUR INTERVAL 20 METERS  
NATIONAL GEODETIC VERTICAL DATUM OF 1929  
ELEVATIONS SHOWN TO THE NEAREST METER

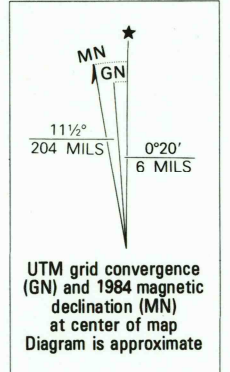


CONVERSION TABLE

Meters	Feet
1	3.2808
2	6.5617
3	9.8425
4	13.1234
5	16.4042
6	19.6850
7	22.9659
8	26.2467
9	29.5276
10	32.8084

To convert meters to feet  
multiply by 3.2808  
To convert feet to meters  
multiply by 0.3048

DECLINATION DIAGRAM



ADJOINING MAPS

1	2	3
1	2	3
4	5	6
7	8	9

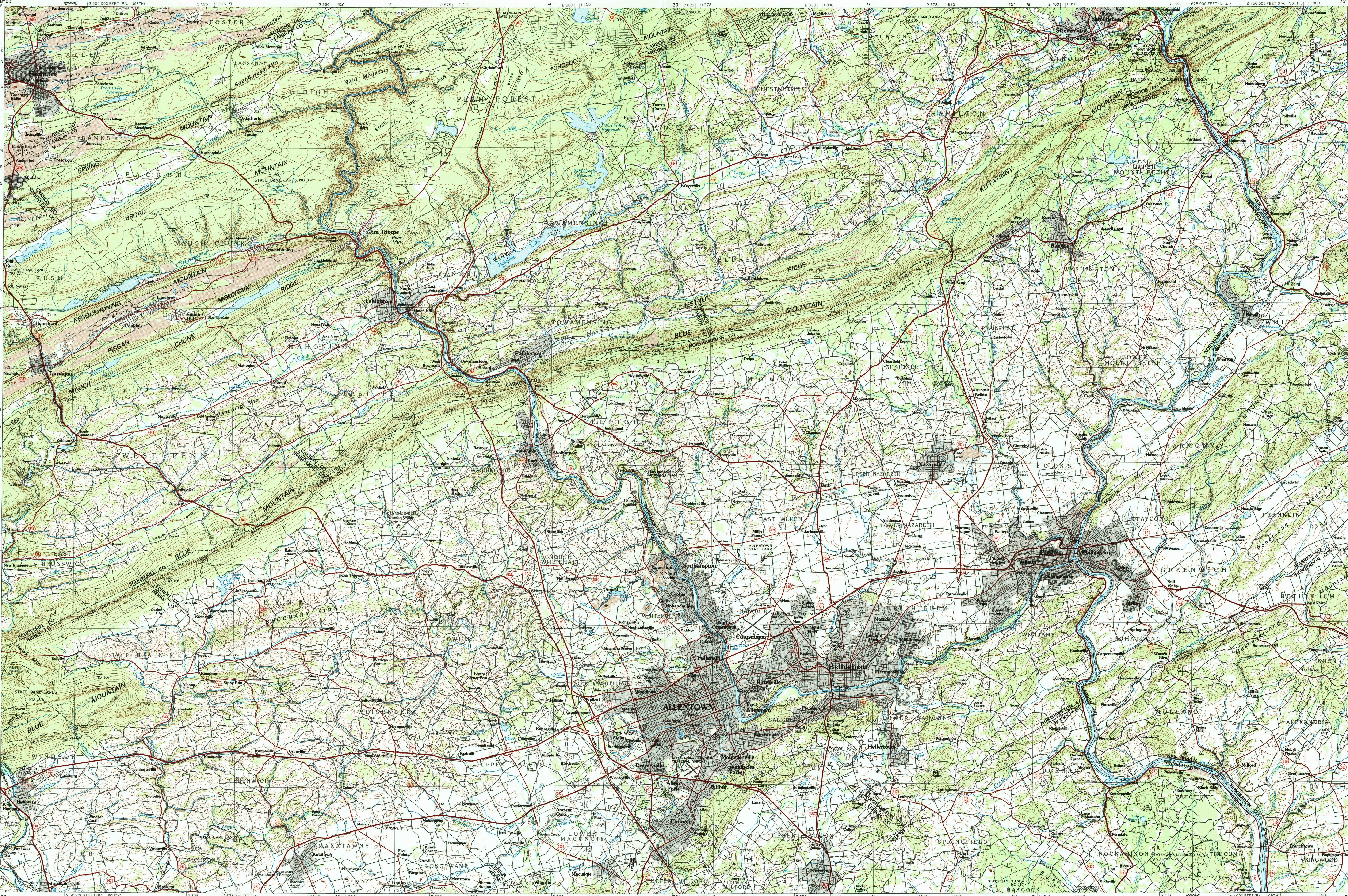
1. Williamsport East  
2. Scranton  
3. Hazleton  
4. Sunbury  
5. Newark  
6. Reading  
7. Pottsville  
8. Trearton

FOR SALE BY U. S. GEOLOGICAL SURVEY  
DENVER, COLORADO 80225, OR RESTON, VIRGINIA 22092

Topographic Map Symbols

Primary highway, hard surface	Secondary highway, hard surface	Light duty road, principal street, hard or improved surface	Other road or street; trail	Route marker: Interstate; U. S. State	Railroad: standard gauge; narrow gauge	Bridge: overpass; underpass	Tunnel: road, railroad	Built up area, locality, elevation	Airport: landing field; landing strip	State boundary	National boundary	County boundary	National or State reservation boundary	Land grant boundary	U. S. public lands survey: range, township, section	Range, township, section line: protracted	Power transmission line; pipeline	Dam; dam with lock	Cemetery; building	Windmill; water well; spring	Mine shaft; adit or cave; mine, quarry; gravel pit	Campground; picnic area; U. S. location monument	Run; cliff; scree	Distorted surface: strip mine, lava, sand	Contours: index; intermediate; supplementary	Bathymetric contours: index; intermediate	Stream, lake, perennial; intermittent	Swamp, large and small; salt, large and small	Area to be submerged; marsh, swamp	Land subject to controlled inundation; woodland	Scrub; mangrove	Orchard; vineyard
-------------------------------	---------------------------------	---	-----------------------------	---------------------------------------	--	-----------------------------	------------------------	------------------------------------	---------------------------------------	----------------	-------------------	-----------------	--	---------------------	---	---	-----------------------------------	--------------------	--------------------	------------------------------	--	--	-------------------	---	--	---	---------------------------------------	---	------------------------------------	---	-----------------	-------------------

A pamphlet describing topographic maps is available on request



INTERIOR - GEOLOGICAL SURVEY, RESTON, VIRGINIA - 1988

KILOMETERS

1 CENTIMETER ON THE MAP REPRESENTS 1 KILOMETER ON THE GROUND

SCALE 1:100 000

CONTOUR INTERVAL 20 METERS

ALLENTOWN, PENNSYLVANIA - NEW JERSEY

40075-E1-TM-100

1984