

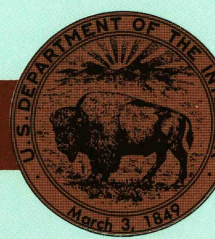
Williamsport East
PENNSYLVANIA

1:100 000-scale metric
topographic map



30 X 60 MINUTE QUADRANGLE
SHOWING

- Contours and elevations in meters
- Highways, roads and other manmade structures
- Water features
- Woodland areas
- Geographic names

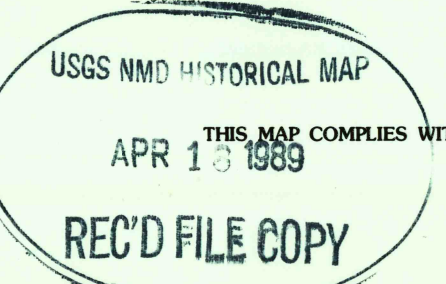


GEOLOGICAL SURVEY

1984

Produced by the United States Geological Survey
Computed from USGS 1:250 000-scale topographic maps dated 1969-1978. Planimetry revised from aerial photographs taken 1981 and other source data. Revised information not field checked.
Map edited 1984.
Projection and 10 000-meter grid, zone 18, Universal Transverse Mercator. 25 000-foot grid ticks based on Pennsylvania coordinate system, north zone. 1927 North American Datum
To place on the predicted North American Datum 1983 move the projection lines 5 meters south and 28 meters west.
There may be private inholdings within the boundaries of the National or State reservations shown on this map.

CONTOUR INTERVAL 20 METERS
NATIONAL GEODETIC VERTICAL DATUM OF 1929
ELEVATIONS SHOWN TO THE NEAREST METER



CONVERSION TABLE		DECLINATION DIAGRAM		ADJOINING MAPS			
Meters	Feet			1	2	3	
1	3.2808			4			
2	6.5617			5			
3	9.8425			6			
4	13.1234			7			
5	16.4042			8			
6	19.6850						
7	22.9659						
8	26.2467						
9	29.5275						
10	32.8084						

To convert meters to feet multiply by 3.2808
To convert feet to meters multiply by 0.3048

UTM grid convergence (GN) and 1984 magnetic declination (MN) at center of map Diagram is approximate

1 Williamsport
2 Towards
3 Williamsport West
4 Scenery
5 State College
6 Scenery
7 Scenery
8 Allentown

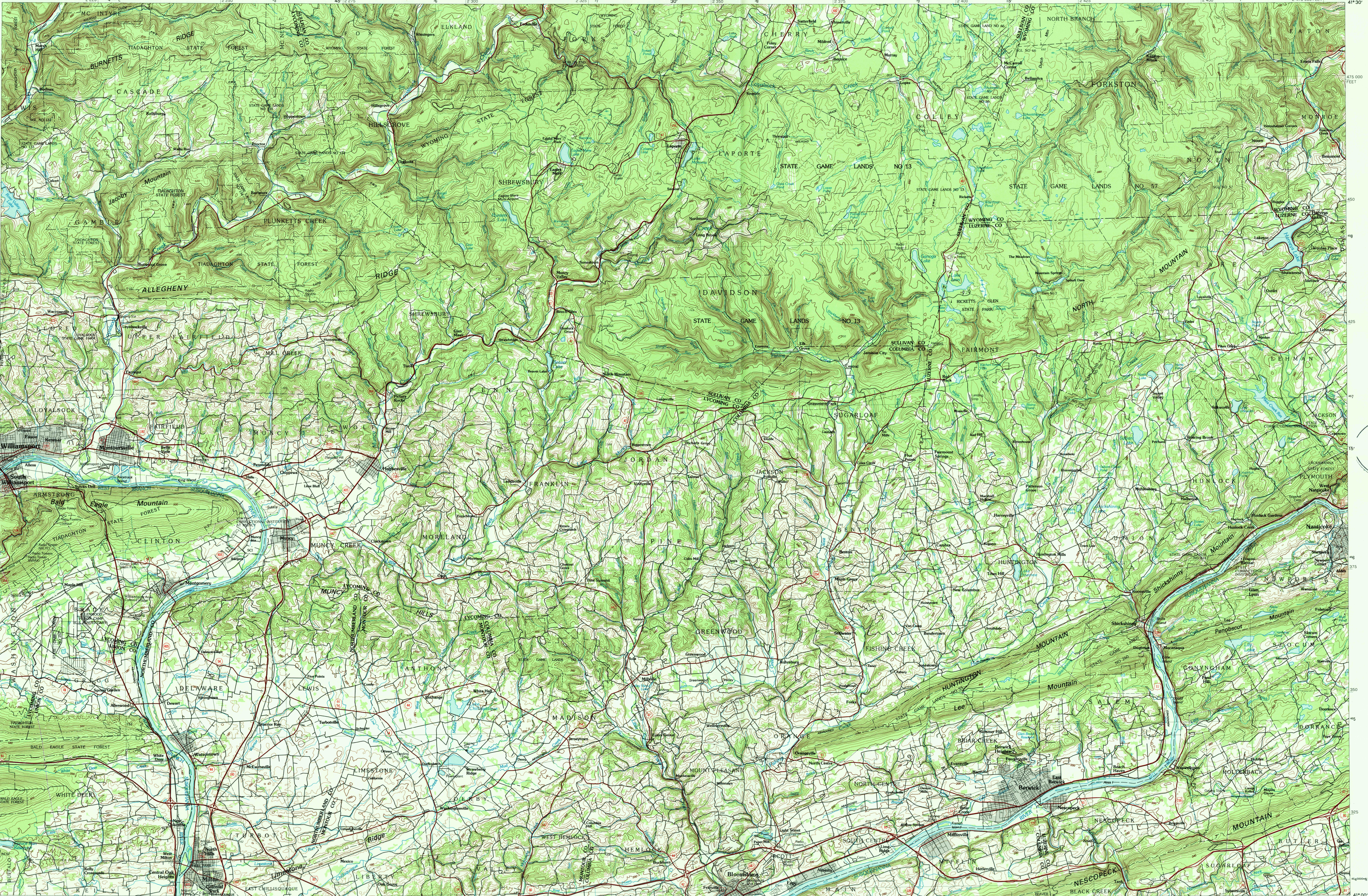
FOR SALE BY U. S. GEOLOGICAL SURVEY
DENVER, COLORADO 80225, OR RESTON, VIRGINIA 22092

Topographic Map Symbols

Primary highway, hard surface	
Secondary highway, hard surface	
Light duty road, principal street, hard or improved surface	
Other road or street; trail	
Roads marker: Interstate; U. S.; State	
Railroad: standard gauge; narrow gauge	
Bridge; overpass; underpass	
Tunnel: road; railroad	
Built up area; locality; elevation	
Airport: landing field; landing strip	
National boundary	
State boundary	
County boundary	
National or State reservation boundary	
Land grant boundary	
U. S. public lands survey: range, township, section	
Range, township; section line: protected	
Power transmission line; pipeline	
Dam; dam with lock	
Cemetery; building	
Windmill; water well; spring	
Mine shaft; adit or cave; mine, quarry; gravel pit	
Campground; picnic area; U. S. location monument	
Ruin; old dwelling	
Distorted surface: strip mine, lake, and	
Contours: index; intermediate; supplementary	
Bathymetric contours: index; intermediate	
Stream, lake; perennial; intermittent	
Rapids, large and small; falls, large and small	
Area to be submerged; marsh, swamp	
Land subject to controlled inundation; woodland	
Scrub; meadow	
Orchard; vineyard	

A pamphlet describing topographic maps is available on request

4/18/89



INTERIOR—GEOLOGICAL SURVEY, RESTON, VIRGINIA—1988

SCALE 1:100 000

1 CENTIMETER ON THE MAP REPRESENTS 1 KILOMETER ON THE GROUND

CONTOUR INTERVAL 20 METERS

WILLIAMSPORT EAST, PENNSYLVANIA

41076-A1-TM-100

1984