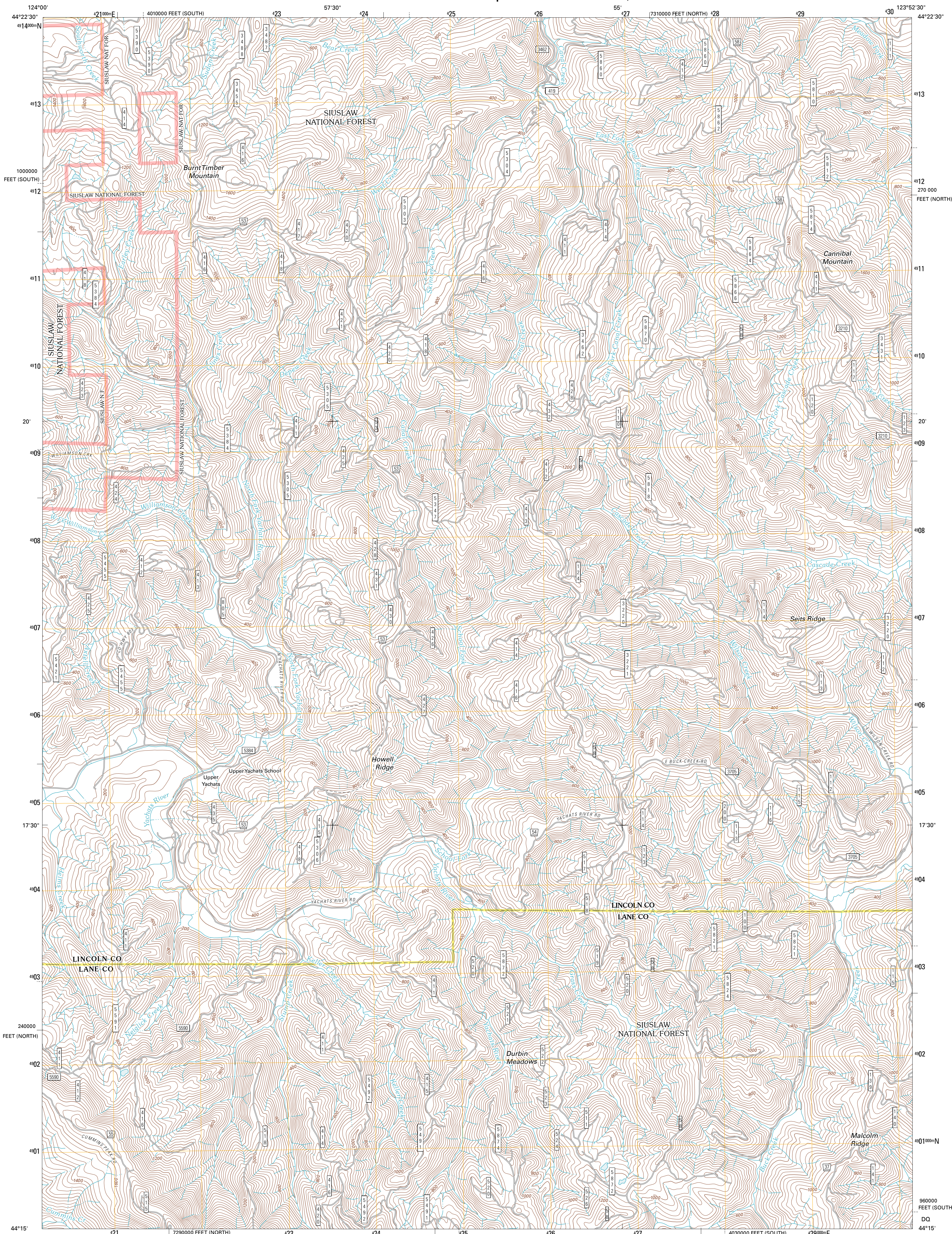




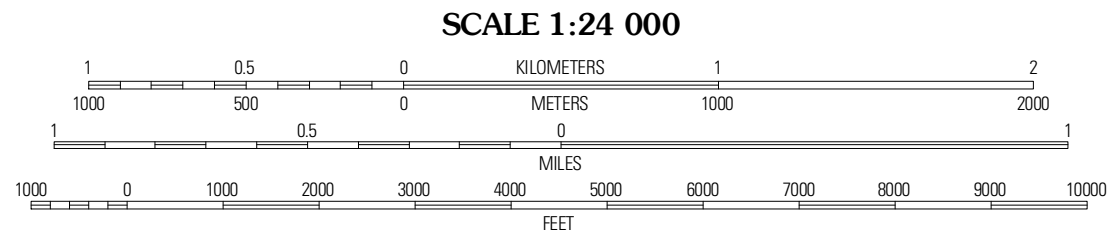
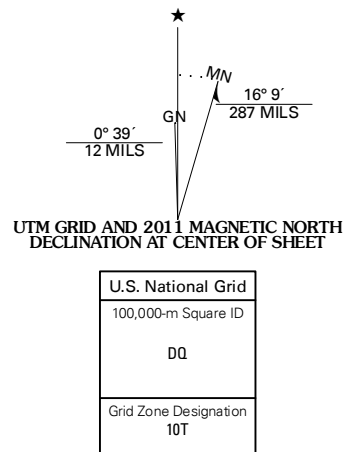
U.S. DEPARTMENT OF THE INTERIOR  
U. S. GEOLOGICAL SURVEY



CANNIBAL MOUNTAIN QUADRANGLE  
OREGON  
7.5-MINUTE SERIES



Produced by the United States Geological Survey  
North American Datum of 1983 (NAD83)  
Roads within US Forest Service Lands.....FSTopo Data  
with limited Forest Service updates, 2009  
Names.....GNIS, 2010  
Hydrography.....National Hydrography Dataset, 2009  
Contours.....National Elevation Dataset, 1999  
Boundaries.....Census, IBWC, IBC, USGS, 1972 - 2010



CONTOUR INTERVAL 40 FEET  
NORTH AMERICAN VERTICAL DATUM OF 1988  
This map was produced to conform with version 0.5.10  
of the USGS US Topo Product Standard.  
A metadata file associated with this product is draft version 0.5.16



|             |                   |               |
|-------------|-------------------|---------------|
| Waldport    | Tidewater         | Hellon Rapids |
| Yachats     | Cannibal Mountain | Five Rivers   |
| Heceta Head | Cummins Peak      | Herman Creek  |

ROAD CLASSIFICATION  
Interstate Route  
US Route  
Ramp  
Interstate Route  
US Route  
FS Passenger Route  
FS Primary Route  
State Route  
Local Road  
4WD  
FS High Clearance Route  
Check with local Forest Service unit for current travel conditions and restrictions.

CANNIBAL MOUNTAIN, OR  
2011