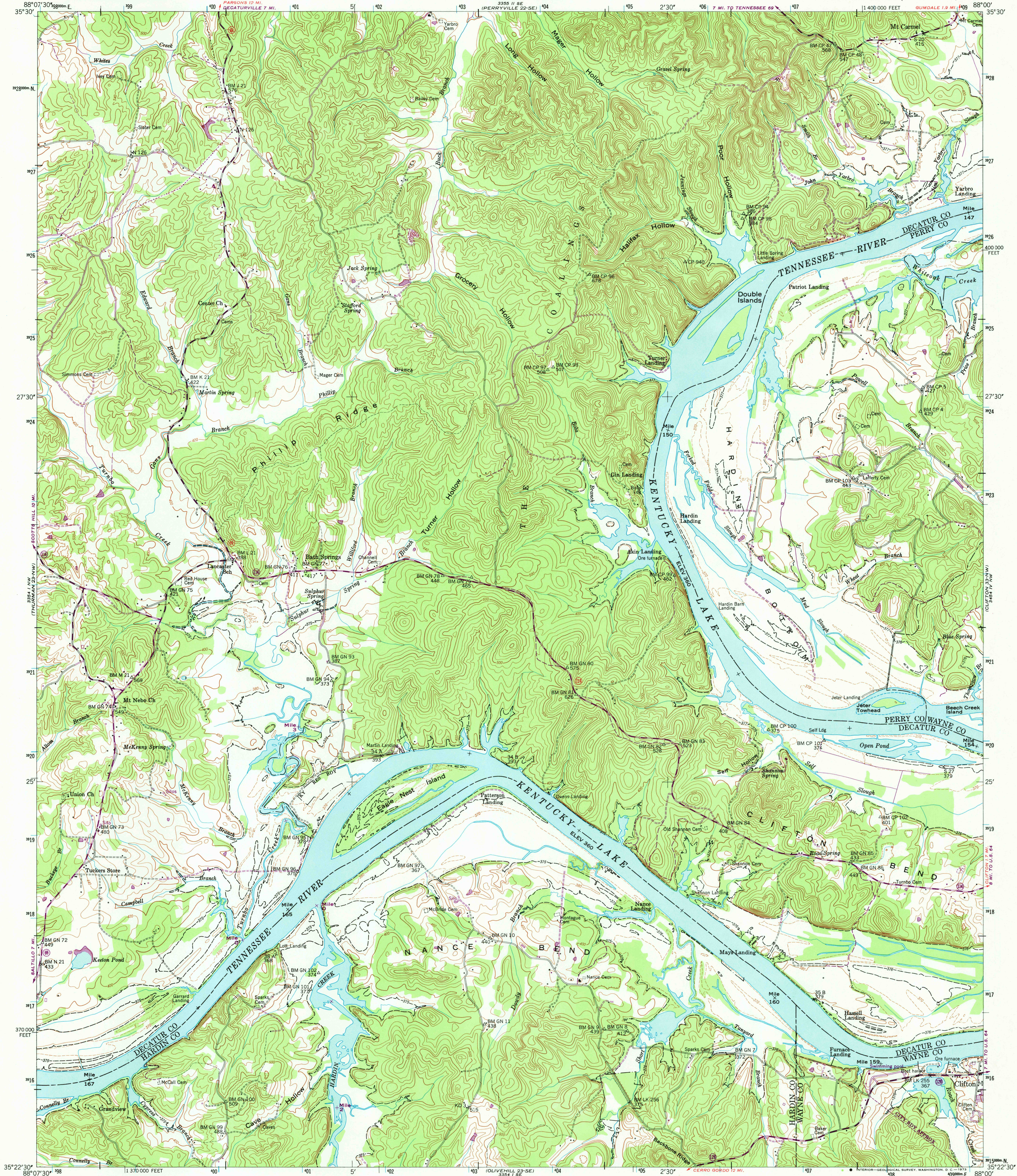


UNITED STATES
DEPARTMENT OF THE INTERIOR
GEOLOGICAL SURVEY

UNITED STATES
TENNESSEE VALLEY AUTHORITY
MAPS AND SURVEYS BRANCH

BATH SPRINGS QUADRANGLE
TENNESSEE
7.5 MINUTE SERIES (TOPOGRAPHIC) 23-NE



Mapped and edited by Tennessee Valley Authority
Published by the Geological Survey

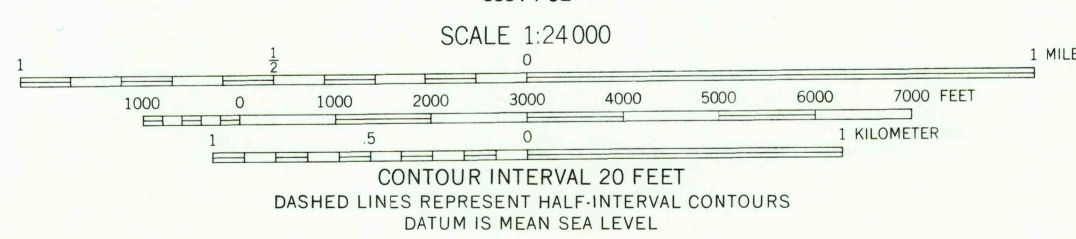
Control by USC&GS, USGS, CE, and TVA
Topography by USGS and TVA by photogrammetric and planetable
methods using aerial photographs taken 1946-47.
Map field checked by TVA, 1949

Polyconic projection. 1927 North American datum
10,000-foot grid based on Tennessee rectangular
coordinate system
1000 meter Universal Transverse Mercator Grid ticks,
Zone 16, shown in blue

— indicates Kentucky Lake Easement Boundary

Revisions shown in purple and recomputation of woodland
areas compiled by the Tennessee Valley Authority from aerial
photographs taken 1972. This information not field checked

Fine purple dashed lines indicate selected
fence and field lines visible on aerial
photography. This information is unchecked



THIS MAP COMPLIES WITH NATIONAL MAP ACCURACY STANDARDS
FOR SALE BY U.S. GEOLOGICAL SURVEY, WASHINGTON, D.C. 20242,
TENNESSEE DIVISION OF GEOLOGY, NASHVILLE, TENN. 37219,
U.S. TENNESSEE VALLEY AUTHORITY, CHATTANOOGA, TENN. 37401 OR KNOXVILLE, TENN. 37902
A FOLDER DESCRIBING TOPOGRAPHIC MAPS AND SYMBOLS IS AVAILABLE ON REQUEST



ROAD CLASSIFICATION
Heavy-duty Poor motor road
Medium-duty Wagon and jeep track
Light-duty Foot trail
U.S. Route State Route
In developed areas, only through roads are classified

USGS
Historical File
Topographic Division

BATH SPRINGS, TENN.
N3522.5-W8800.7/5
1949
PHOTOREVISED 1972
AMS 3354 1 NE-SERIES V841

260
50 PLAIN