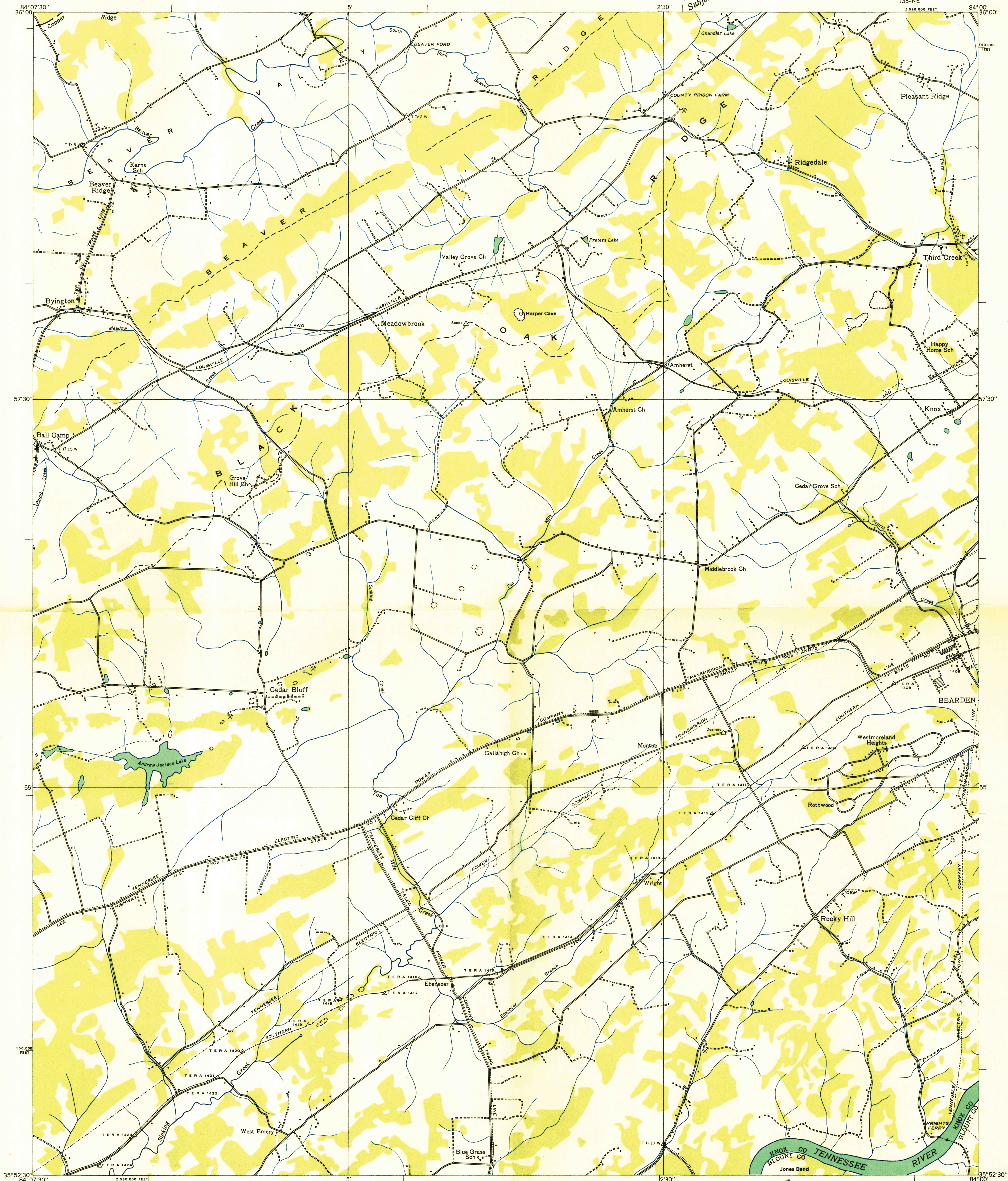


Advance sheet  
Subject to correction



Albert Pike, Division Engineer  
Compiled by U. S. Geological Survey from aerial photographs  
Control by U. S. Geological Survey, U. S. Coast and Geodetic Survey and  
Tenn. Em. Rel. Adm.  
Field examination in 1935

Scale 24,000  
5,000 0 5,000 10,000 Feet  
2 Miles

USGS  
HISTORICAL FILE  
TOPOGRAPHIC DIVISION

TRUE NORTH  
MAGNETIC NORTH  
APPROXIMATE MEAN  
DECLINATION, 1936

Polyconic projection. 1927 North American datum  
10,000 foot grid based on Tennessee  
rectangular coordinate system  
Ridge line  
Trail  
Sinks  
BEARDEN, TENN.  
138-NE