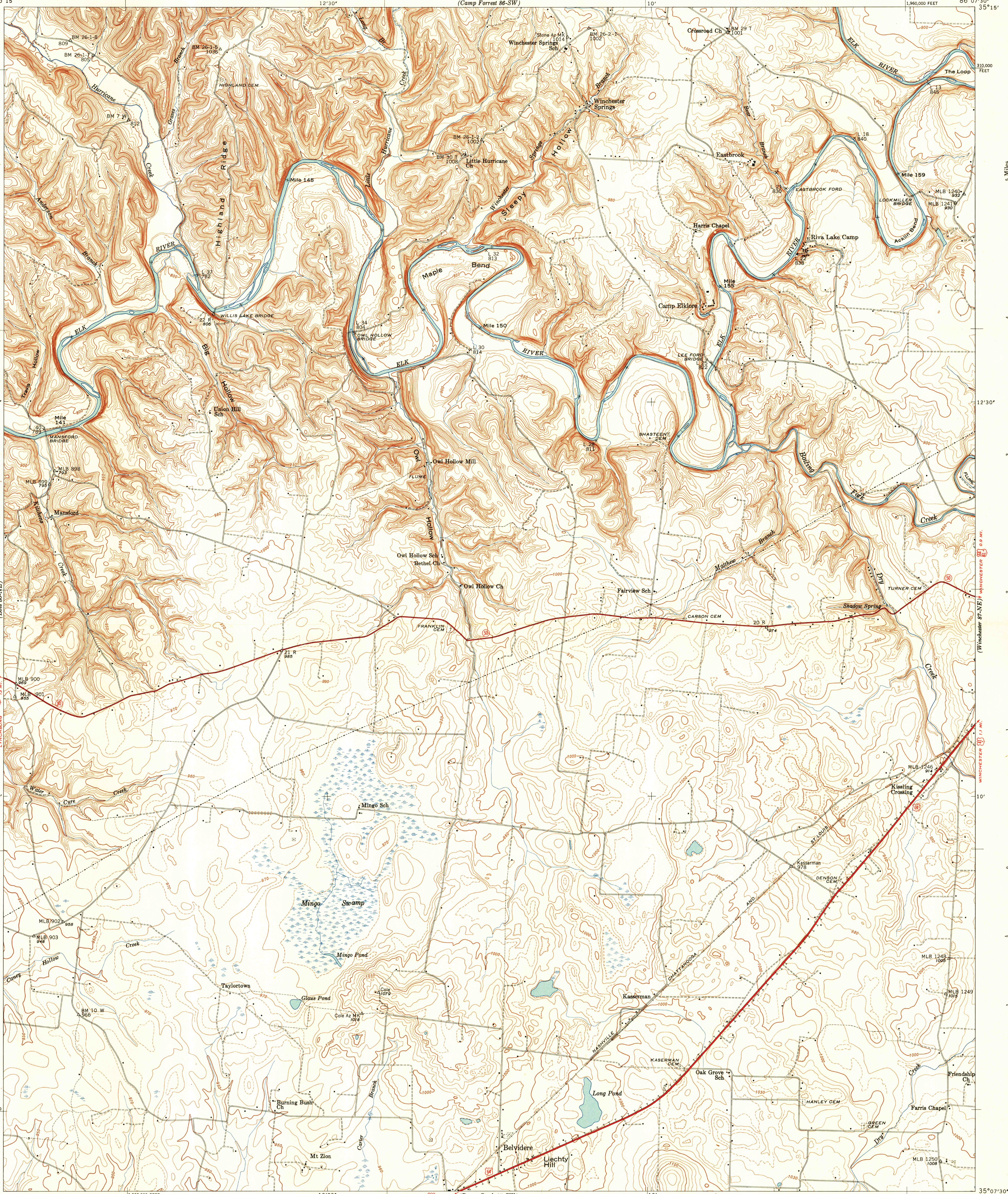


UNITED STATES  
DEPARTMENT OF THE INTERIOR  
GEOLOGICAL SURVEY

UNITED STATES  
TENNESSEE VALLEY AUTHORITY  
MAPS AND SURVEYS DIVISION

U. S. G. S.  
FILE COPY  
Inspection and Editing.

TENNESSEE  
(FRANKLIN COUNTY)  
BELVIDERE QUADRANGLE  
87-NW



U. S. G. S.  
FILE COPY  
Inspection and Editing.

Control by USC&GS, USGS, WPA, and TVA  
Topography by USGS and TVA from aerial  
photographs by stereophotogrammetric methods  
Field examination by Tennessee Valley Authority, 1947  
Maps distributed by the Geological Survey

THIS MAP COMPLIES WITH NATIONAL MAP ACCURACY STANDARDS

2 1/2°  
TRUE NORTH  
MAGNETIC NORTH  
APPROXIMATE MEAN  
DECLINATION, 1947

Scale 24000  
1 inch = 2400 feet  
Occasional 5 foot contours shown by broken lines  
Datum is mean sea level

Reproduced by the U. S. Coast and Geodetic Survey 1948  
Polyconic projection, 1927 North American datum  
10,000 foot grid based on Tennessee  
rectangular coordinate system

U. S. G. S.  
HISTORICAL FILE  
Inspection and Editing.

ROUTES USUALLY TRAVELED  
HARD, IMPERVIOUS SURFACES  
OTHER SURFACE IMPROVEMENTS  
U. S. ROUTE

BELVIDERE, TENN.  
87-NW  
Edition of 1947  
N3507.5-W8607.5/7.5

JUL 2 1948