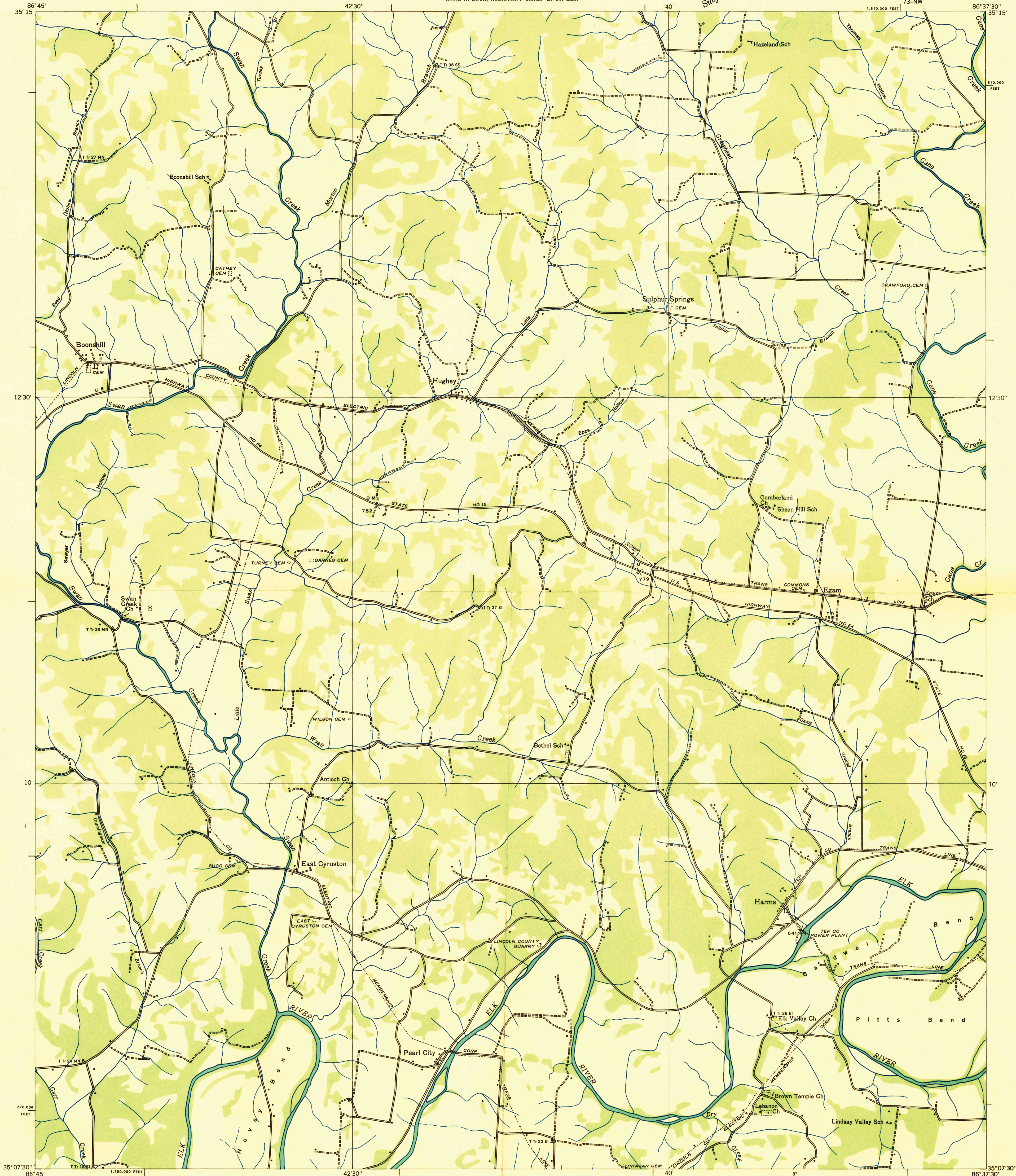


DEPARTMENT OF THE INTERIOR
U. S. GEOLOGICAL SURVEY

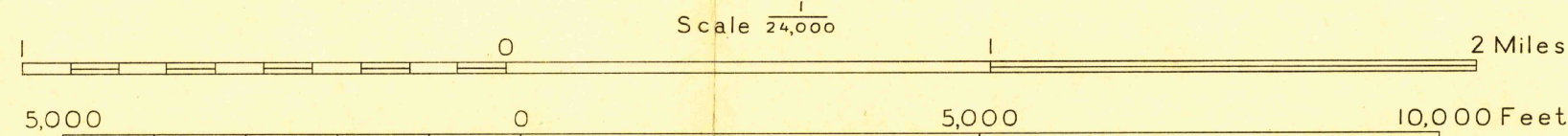
TENNESSEE VALLEY AUTHORITY
ARTHUR E. MORGAN, CHAIRMAN AND CHIEF ENGINEER
CARL A. BOCK, ASSISTANT CHIEF ENGINEER

Advance sheet
Subject to correction

TENNESSEE
(LINCOLN COUNTY)
BOONSHILL QUADRANGLE
73-NW
1:610,000 FEET



Albert Pike, Division Engineer
Compiled by U. S. Geological Survey from aerial photographs
Control by U. S. Geological Survey, U. S. Coast and Geodetic Survey and
Corps of Engineers, U. S. Army
Field examination in 1936



Datum is mean sea level

USGS
HISTORICAL FILE
TOPOGRAPHIC DIVISION
Polyconic projection. 1927 North American datum
10,000 foot grid based on Tennessee
rectangular coordinate system
Trail
Probable drainage
BOONSHILL, TENN.
73-NW