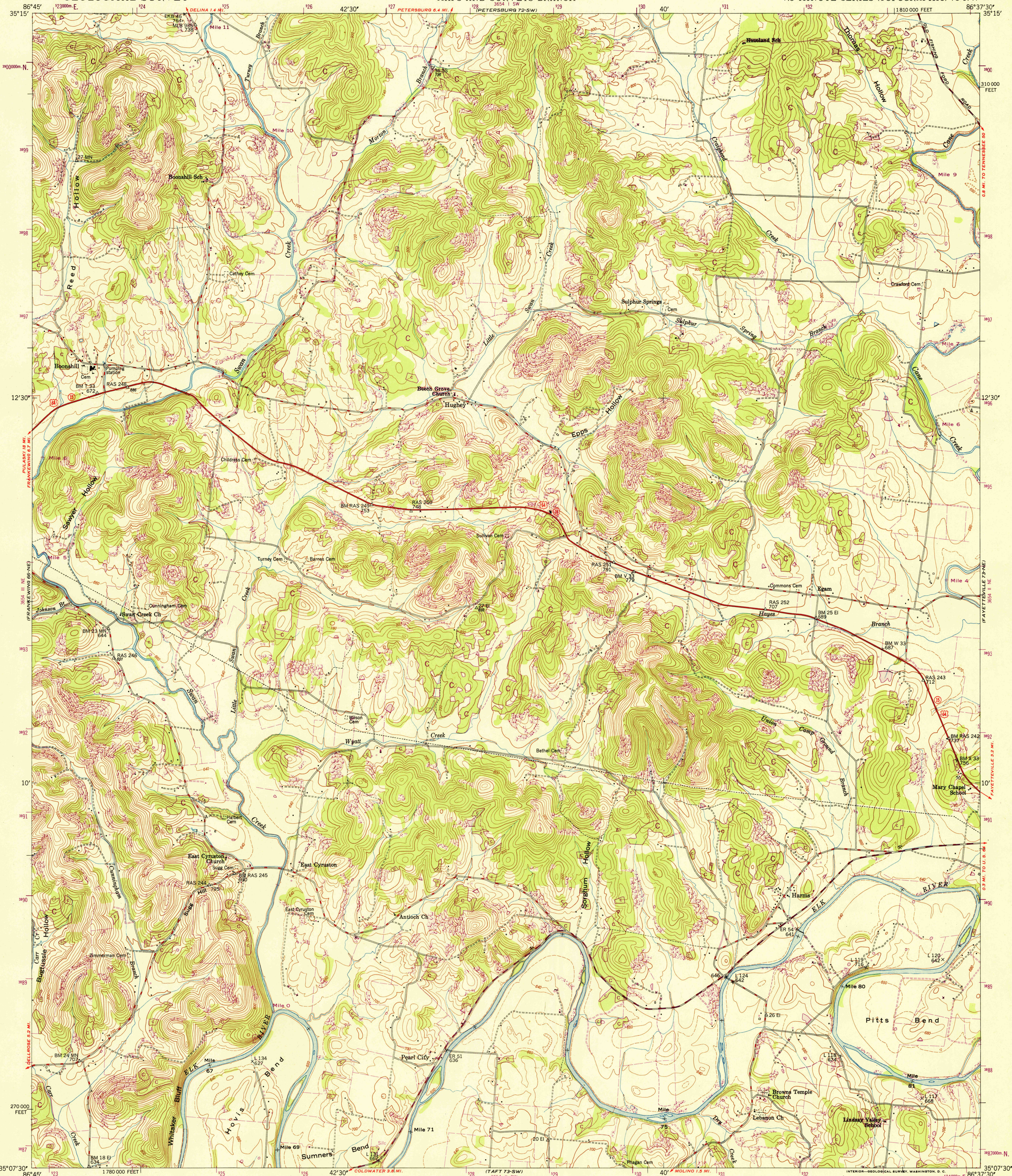


UNITED STATES
DEPARTMENT OF THE INTERIOR
GEOLOGICAL SURVEY

UNITED STATES
TENNESSEE VALLEY AUTHORITY
MAPS AND SURVEYS BRANCH

BOONSHILL QUADRANGLE
TENNESSEE-LINCOLN CO.
7.5 MINUTE SERIES (TOPOGRAPHIC) 73-NW



Mapped and edited by Tennessee Valley Authority
Published by the Geological Survey

Control by USCGS, USGS, USED, and TVA

Topography by USGS and TVA by multiplex methods from aerial
photographs taken 1944. Field examination by TVA, 1949

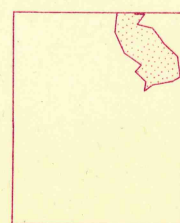
Polyconic projection, 1927 North American datum
10,000-foot grid based on Tennessee rectangular
coordinate system

1000-meter Universal Transverse Mercator grid ticks,
zone 16, shown in purple

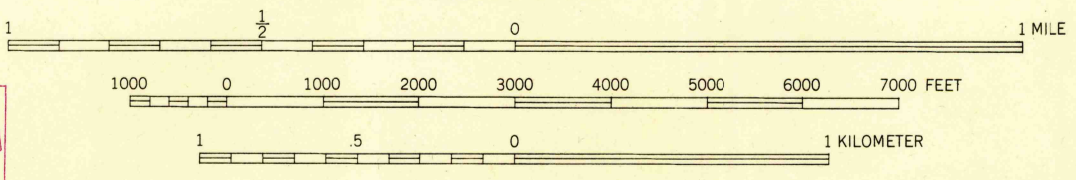
Grid declination 0°12', 4 miles East

Revisions in purple compiled by TVA, January 1967 from
March 1965 photography without field examination

TRUE NORTH
MAGNETIC NORTH
APPROXIMATE MEAN
DECLINATION 1967
3°



Larger scale
topographic maps
available from TVA



CONTOUR INTERVAL 20 FEET
DASHED LINES REPRESENT HALF-INTERVAL CONTOURS
DATUM IS MEAN SEA LEVEL

THIS MAP COMPLIES WITH NATIONAL MAP ACCURACY STANDARDS

FOR SALE BY U. S. GEOLOGICAL SURVEY, WASHINGTON 25, D. C. 20242
AND BY U. S. TENNESSEE VALLEY AUTHORITY, CHATTANOOGA OR KNOXVILLE, TENN. 37401 OR 37902
A FOLDER DESCRIBING TOPOGRAPHIC MAPS AND SYMBOLS IS AVAILABLE ON REQUEST

LEGEND

Fence and field line
Stream
Pond and dam
Woodland (formerly clearing)
Clearing (formerly woodland)
General detritus
Medium-duty road
Light-duty road
Foot trail
Hard-surface all weather roads
Heavy-duty
Medium-duty
Loose-surface, graded, or narrow hard-surface
Dry weather roads
Improved dirt
Unimproved dirt
U. S. Route
State Route

FILE COPY
MAP INFORMATION OFFICE
GEOLOGICAL SURVEY

QUADRANGLE LOCATION
MISS. ALA. GA. S.C.
MO. KENTUCKY VA.
TENN. N.C.

BOONSHILL, TENN.
N3507.5-W8637.5/7.5

PRINTED 1951

AMS 3654 II NW SERIES V841

73-NW