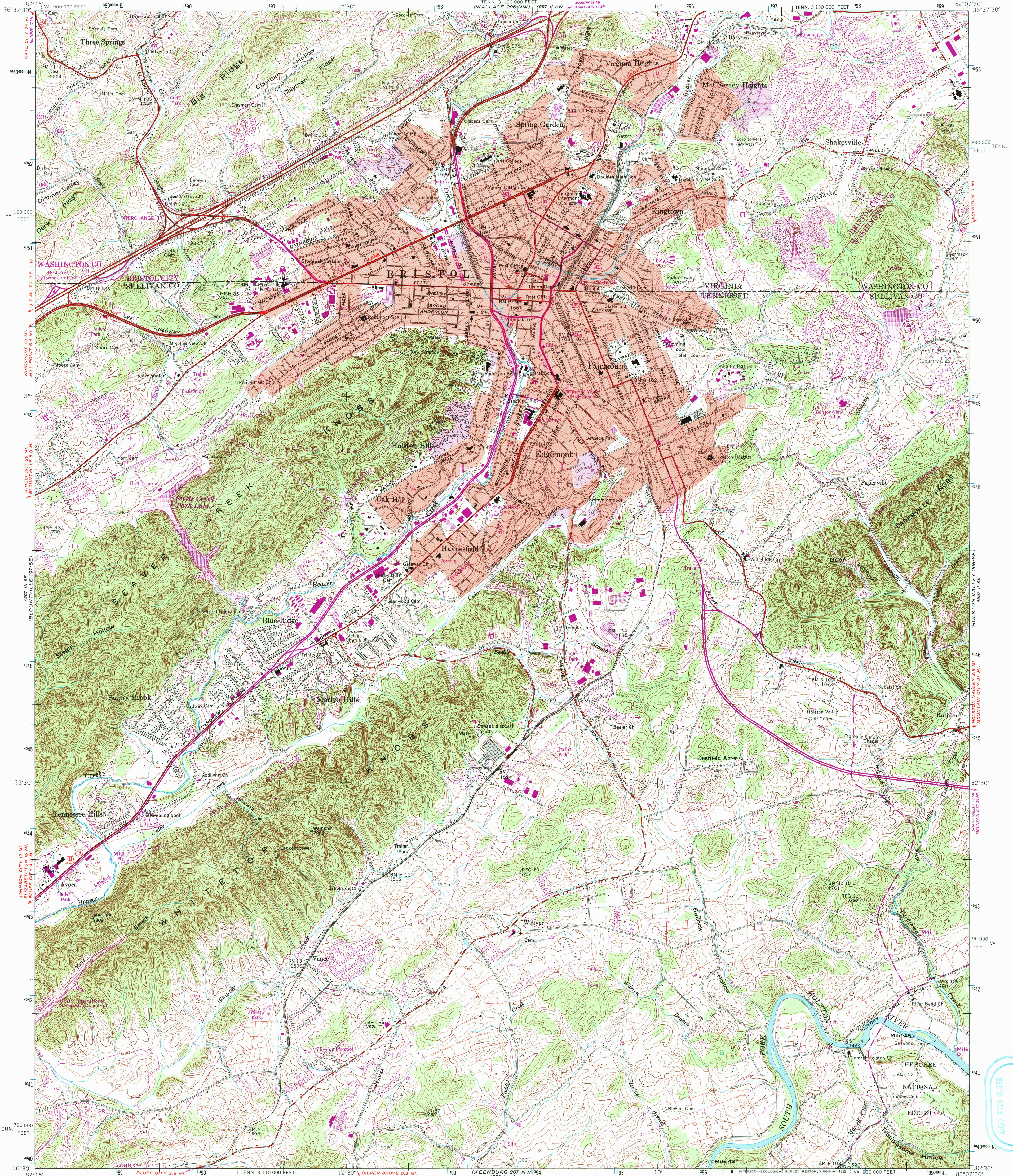


UNITED STATES  
DEPARTMENT OF THE INTERIOR  
GEOLOGICAL SURVEY

UNITED STATES  
TENNESSEE VALLEY AUTHORITY  
MAPS AND SURVEYS DEPARTMENT

BRISTOL QUADRANGLE  
TENNESSEE-VIRGINIA  
7.5 MINUTE SERIES (TOPOGRAPHIC) 206-SW



Mapped and edited by Tennessee Valley Authority  
Published by the Geological Survey

Control by NOS/NOAA, USGS, and TVA

Revised by TVA in 1959 by photogrammetric methods using aerial photographs taken 1958 and by reference to TVA-USGS quadrangle dated 1938. Map field checked by TVA, 1959

Polyconic projection, 1927 North American datum  
10,000-foot grid based on Tennessee and Virginia (South)  
rectangular coordinate systems  
1000 meter Universal Transverse Mercator Grid ticks,  
Zone 17, shown in blue

To place on the predicted North American Datum 1983  
move the projection lines 8 meters south and  
13 meters west as shown by dashed corner ticks

Fine red dashed lines indicate selected fence and field lines where  
generally visible on aerial photographs. This information is unchecked

UTM GRID AND 1991 MAGNETIC NORTH  
DECLINATION AT CENTER OF SHEET

Red tint indicates areas in which only  
landmark buildings are shown

There may be private inholdings within the boundaries of  
the National or State reservations shown on this map

SCALE 1:24,000

CONTOUR INTERVAL 20 FEET  
DASHED LINES REPRESENT HALF INTERVAL CONTOURS  
NATIONAL GEODETIC VERTICAL DATUM OF 1929

THIS MAP COMPLIES WITH NATIONAL MAP ACCURACY STANDARDS  
FOR SALE BY U.S. GEOLOGICAL SURVEY, DENVER, COLORADO 80225, OR RESTON, VIRGINIA 22092  
TENNESSEE DEPARTMENT OF CONSERVATION, DIVISION OF GEOLOGY, NASHVILLE, TENN. 37243  
AND VIRGINIA DIVISION OF MINERAL RESOURCES, CHARLOTTESVILLE, VIRGINIA 22093  
AND U.S. TENNESSEE VALLEY AUTHORITY, CHATTANOOGA, TENN. 37402  
A FOLDER DESCRIBING TOPOGRAPHIC MAPS AND SYMBOLS IS AVAILABLE ON REQUEST



ROAD CLASSIFICATION (TVA 206-SW)

Primary highway, hard surface  
Secondary highway, hard surface  
Unimproved road  
Interstate Route  
U.S. Route  
State Route

BRISTOL, TENN.-VA.  
36082 E2-TF-024

1959  
PHOTOREVISED 1991  
DMA 4557 II SW-SERIES Y841

Revisions shown in purple and woodland compiled by  
the Geological Survey in cooperation with Commonwealth  
of Virginia agencies from aerial photographs taken 1987  
and other sources. This information not field checked  
Map edited 1991

Purple tint indicates extension of urban areas