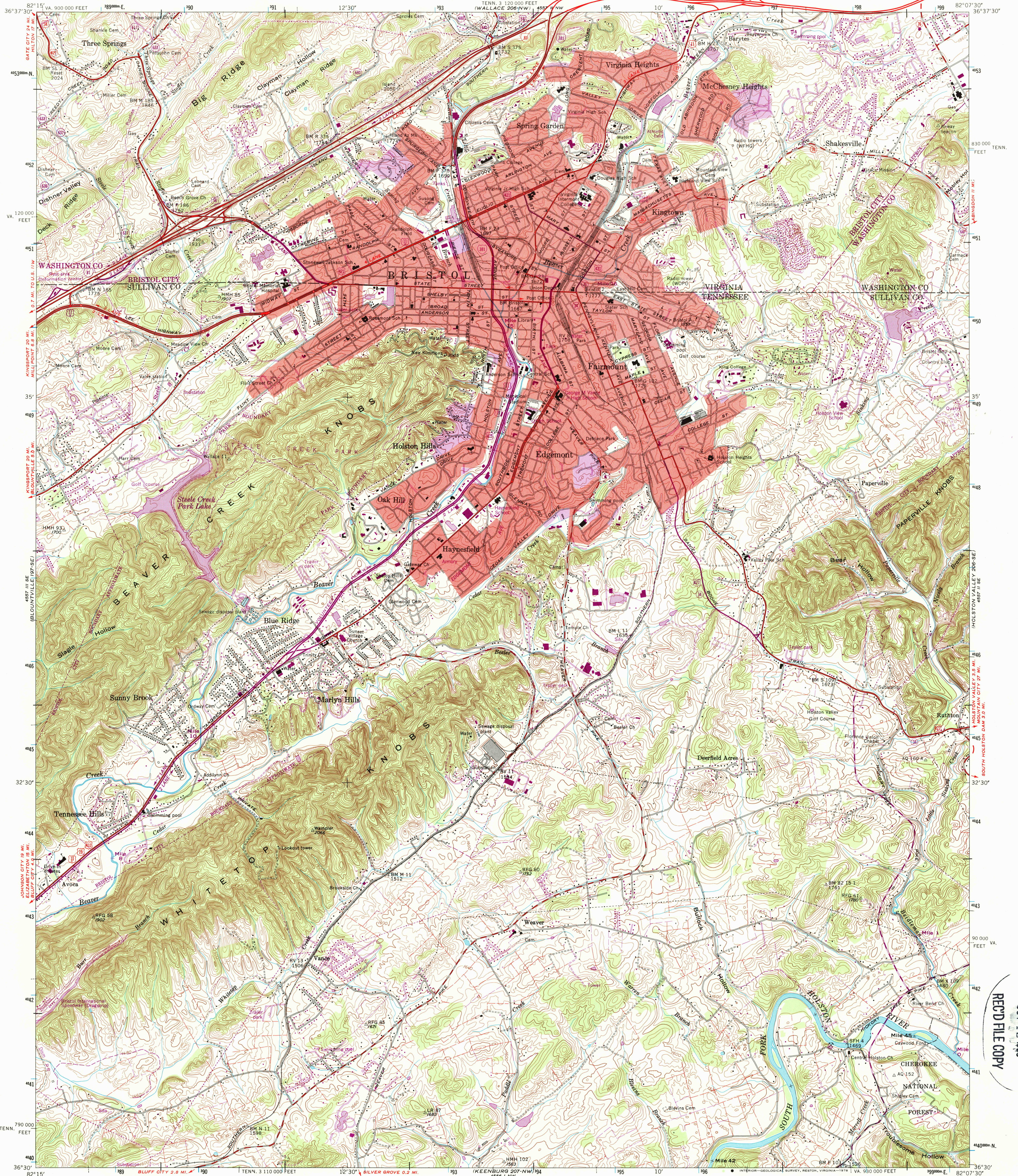


UNITED STATES
DEPARTMENT OF THE INTERIOR
GEOLOGICAL SURVEY

UNITED STATES
TENNESSEE VALLEY AUTHORITY
MAPPING SERVICES BRANCH

BRISTOL QUADRANGLE
TENNESSEE-VIRGINIA
7.5 MINUTE SERIES (TOPOGRAPHIC)



Mapped and edited by Tennessee Valley Authority
Published by the Geological Survey

Control by NOS/NOAA, USGS, and TVA

Revised by TVA in 1959 by photogrammetric methods using
aerial photographs taken 1958 and by reference to TVA-USGS
quadrangle dated 1938. Map field checked by TVA, 1959

Polyconic projection. 1927 North American datum
10,000-foot grid based on Tennessee and Virginia (South)
rectangular coordinate systems
1000 meter Universal Transverse Mercator Grid ticks.
Zone 17, shown in blue

Fine red dashed lines indicate selected fence and field lines
visible on aerial photographs. This information is unchecked

Red tint indicates areas in which only landmark buildings
are shown

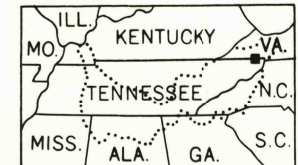
Revisions shown in purple and recompilation of woodland areas
compiled by the Tennessee Valley Authority from aerial photographs
taken 1968 and in cooperation with Commonwealth of Virginia
from aerial photographs taken 1976. This information not field
checked. Map edited 1978.
Purple tint indicates extension of urban areas

UTM GRID AND 1978 MAGNETIC NORTH
DECLINATION AT CENTER OF SHEET

THIS MAP COMPLIES WITH NATIONAL MAP ACCURACY STANDARDS
FOR SALE BY U.S. GEOLOGICAL SURVEY, DENVER, COLORADO 80225, OR RESTON, VIRGINIA 22092
TENNESSEE DEPARTMENT OF CONSERVATION, DIVISION OF GEOLOGY, NASHVILLE, TENN. 37219
AND VIRGINIA DIVISION OF MINERAL RESOURCES, CHARLOTTESVILLE, VIRGINIA 22903
AND U.S. TENNESSEE VALLEY AUTHORITY, CHATTANOOGA, TENN. 37401
A FOLDER DESCRIBING TOPOGRAPHIC MAPS AND SYMBOLS IS AVAILABLE ON REQUEST

SCALE 1:24,000

CONTOUR INTERVAL 20 FEET
DASHED LINES REPRESENT HALF INTERVAL CONTOURS
NATIONAL GEODETIC VERTICAL DATUM OF 1929



QUADRANGLE LOCATION

ROAD CLASSIFICATION
Heavy-duty Poor motor road
Medium-duty Wagon and jeep track
Light-duty Foot trail
Interstate Route U. S. Route State Route
In developed areas, only through roads are classified

BRISTOL, TENN.-VA.
N3630-W8207.5/7.5

1959

PHOTOREVISED 1968 AND 1978
AMS 4457 II SW-SERIES V841

USGS NMD HISTORICAL MAP
OCT 12 1999
REC'D FILE COPY