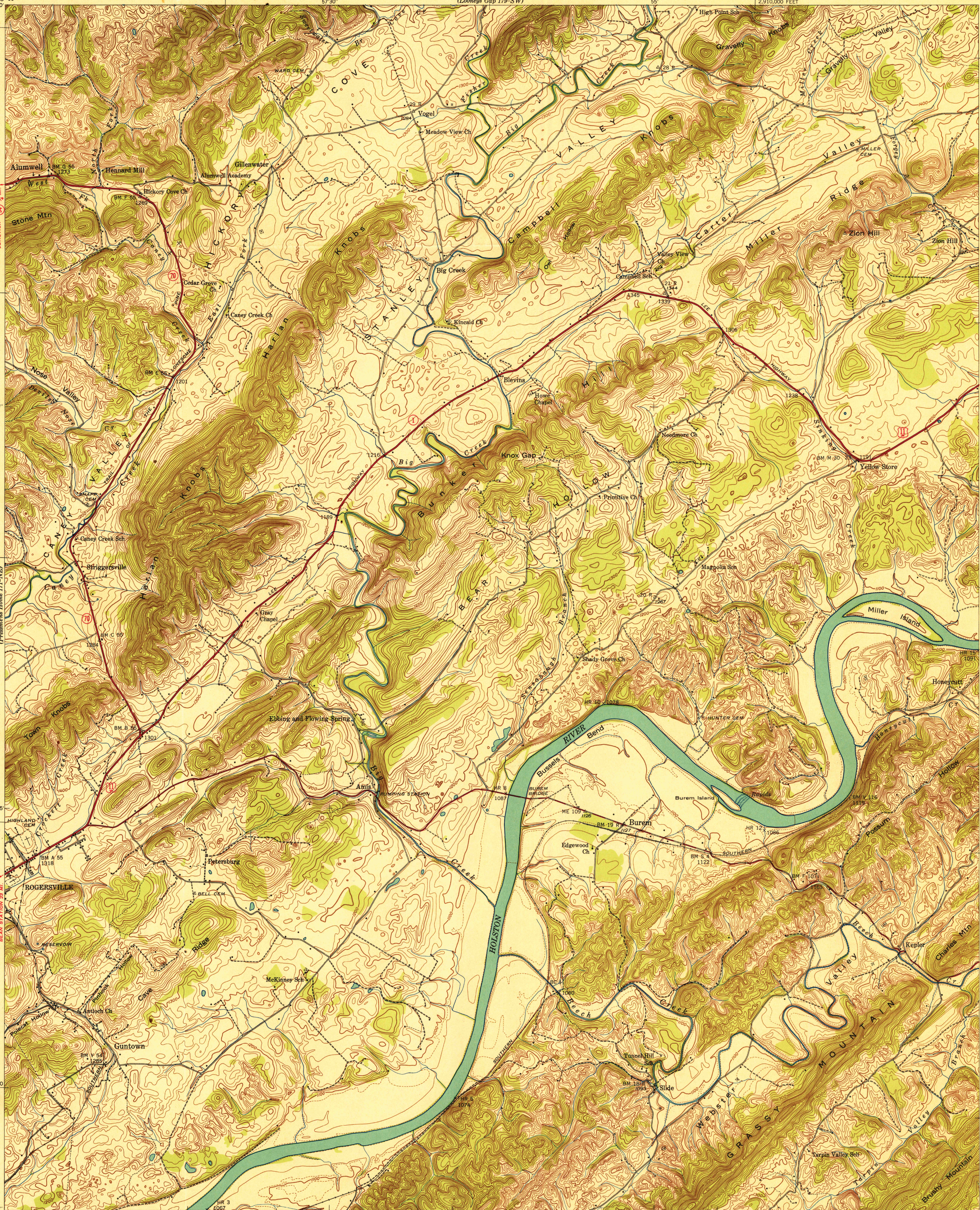
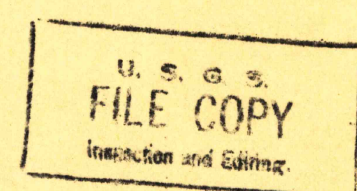


UNITED STATES
DEPARTMENT OF THE INTERIOR
GEOLOGICAL SURVEY

UNITED STATES
TENNESSEE VALLEY AUTHORITY
MAPS AND SURVEYS DIVISION
(Looneys Gap 179-SW)

TENNESSEE
(HAWKINS COUNTY)
BUREM QUADRANGLE
180-NW



Control by USC & GS, USGS, and TVA
Topography by Geological Survey from aerial
photographs by stereophotogrammetric methods
Field examination by Tennessee Valley Authority—1939

Maps distributed by the Geological Survey

APPROXIMATE
DECLINATION

Scale: $\frac{1}{24000}$

A horizontal graphic scale bar. The top part shows distances in miles: 1 mile at the left end, followed by 5000 feet, then 1 mile, then 5000 feet, then 1 mile, and finally 2 miles at the right end. Below this, there are markings for 0, 5000, and 10000 feet. The bottom part shows distances in kilometers: 1 kilometer at the left end, followed by 1/2 kilometer, then 0, then 1 kilometer, and finally 2 kilometers at the right end.

Contour interval 20 feet with 10 foot contours shown by broken lines
Datum is mean sea level

Preliminary edition

Printed by the Geological Survey

USGS
HISTORICAL FILE
TOPOGRAPHIC DIVISION

ROUTES USUALLY TRAVELED _____
HARD, IMPERVIOUS SURFACES _____
OTHER SURFACE IMPROVEMENTS _____

BUREM, TENN

180-NW
Edition of 1940
N3622.5-W8252.5/7.5

JUL 26 1940

U. S. G. S.
FILE COPY
Inspection and Editing