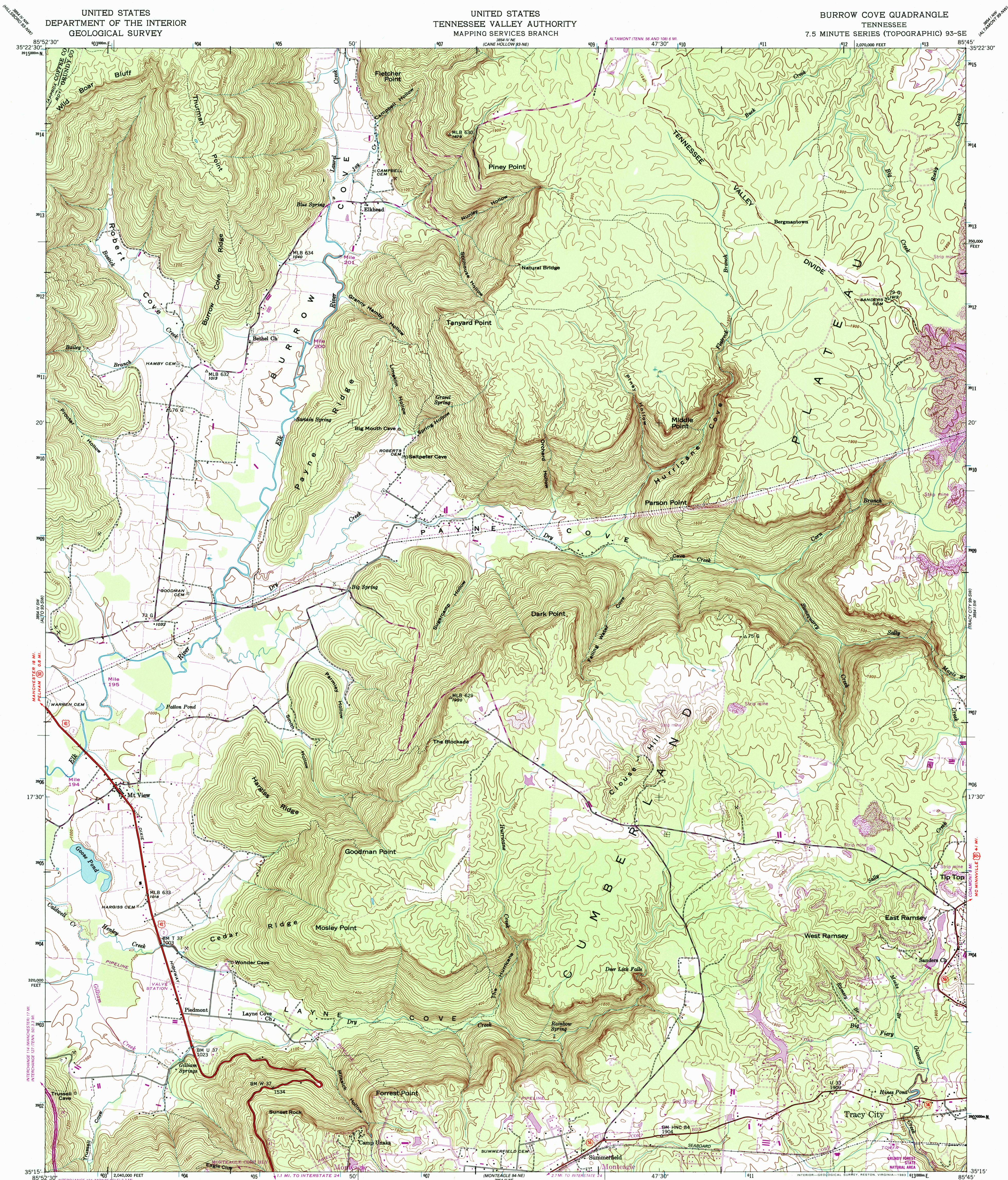


UNITED STATES
TENNESSEE VALLEY AUTHORITY
MAPPING SERVICES BRANCH

7.5 MINUTE SERIES (TOPOGRAPHIC) 93-SE (AL)



Control by NOS/NOAA, USGS, and TVA

Topography by USGS and TVA by photogrammetric methods
Map field checked by TVA, 1947

Polyconic projection. 10,000-foot grid ticks based on Tennessee coordinate system. 1000-meter Universal Transverse Mercator grid ticks, zone 16, shown in blue. 1927 North American Datum To place on the predicted North American Datum 1983 move the projection lines 6 meters south and 3 meters west as shown by dashed corner ticks

There may be private inholdings within the boundaries of the National or State reservations shown on this map

Revisions shown in purple and woodland compiled by the Tennessee Valley Authority from aerial photographs taken 1981 and other sources. This information not field checked. Map edited 1983

3864 10 NE
SCALE 1:24 000

1 1000 0 1000 2000 3000 4000 5000 6000 7000 FEET 1 MIL

1 5 0 1 KILOMETER

CONTOUR INTERVAL 20 FEET
DASHED LINES REPRESENT HALF-INTERVAL CONTOURS
NATIONAL GEODETIC DATUM OF 1929

THIS MAP COMPLIES WITH NATIONAL MAP ACCURACY STANDARDS
FOR SALE BY U. S. GEOLOGICAL SURVEY, RESTON, VIRGINIA 22092,
TENNESSEE DEPARTMENT OF CONSERVATION, DIVISION OF GEOLOGY, NASHVILLE, TENN., 37219
AND U. S. TENNESSEE VALLEY AUTHORITY, CHATTANOOGA, TENN. 37401 OR KNOXVILLE, TENN., 37902
A FOLDER DESCRIBING TOPOGRAPHIC MAPS AND SYMBOLS IS AVAILABLE ON REQUEST

QUADRANGLE LOCATION

Fine purple dashed lines indicate selected fence and field lines where generally visible on aerial photographs.

ROAD CLASSIFICATION		(TVA 93-58)
Primary highway, all weather, hard surface	Light-duty road, all weather, improved surface	
Secondary highway, all weather, hard surface	Unimproved road, fair or dry weather	

RECEIVED Interstate Route

JUL 31 1999

USGS NMD
HISTORICAL MAP ARCHIVES

BURROW COVE, TENN.
35085-C7-TF-024

1947
PHOTOREVISED 1983
DMA 3854 IV SE-SERIES V84

ISBN 0-607-49051-9