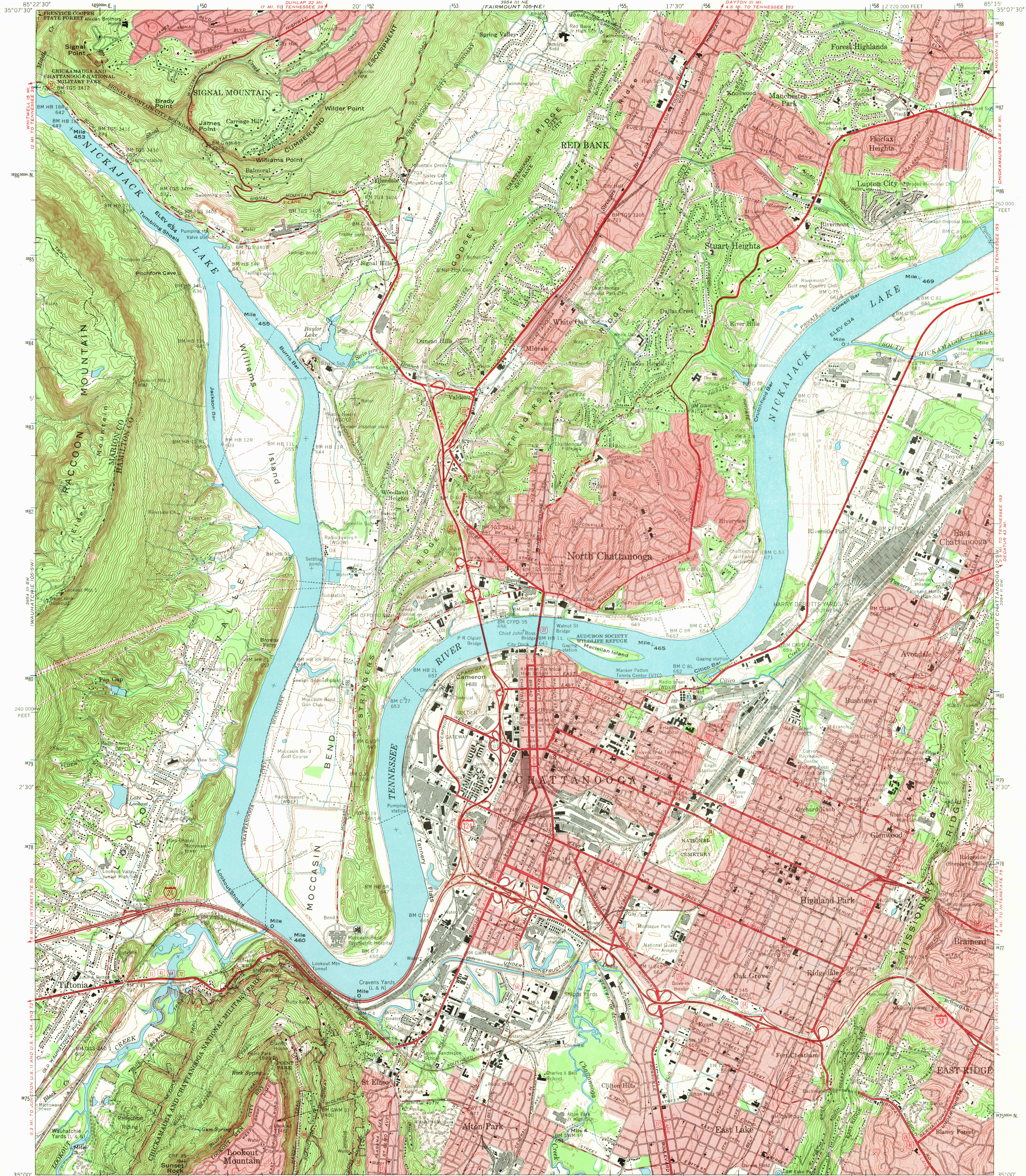


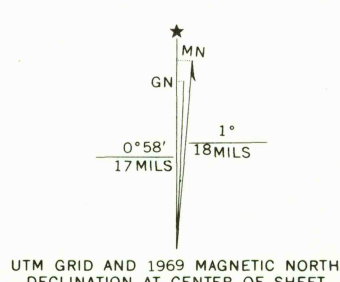
UNITED STATES  
DEPARTMENT OF THE INTERIOR  
GEOLOGICAL SURVEY

UNITED STATES  
TENNESSEE VALLEY AUTHORITY  
MAPS AND SURVEYS BRANCH

CHATTANOOGA QUADRANGLE  
TENNESSEE  
7.5 MINUTE SERIES (TOPOGRAPHIC) 105-SE

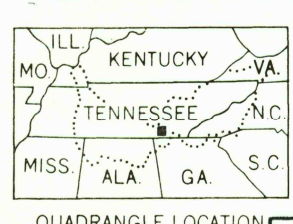


Mapped and edited by Tennessee Valley Authority  
Published by the Geological Survey  
Control by USGS, USGS, CE, and TVA  
Revised by TVA in 1968 by photogrammetric methods using  
aerial photographs taken 1968 and by reference to TVA/USGS  
quadrangle dated 1958. Map field checked by TVA, 1969  
Polyconic projection, 1927 North American datum  
10,000 foot grid based on Tennessee rectangular  
coordinate system  
1000 meter Universal Transverse Mercator Grid ticks,  
Zone 16, shown in blue  
Fine red dashed lines indicate selected fence and field lines  
visible on aerial photographs. This information is unchecked  
Red tint indicates areas in which only landmark buildings are shown



SCALE 1:240,000  
CONTOUR INTERVAL 20 FEET  
DASHED LINES REPRESENT HALF-INTERVAL CONTOURS  
DATUM IS MEAN SEA LEVEL  
THIS MAP COMPLIES WITH NATIONAL MAP ACCURACY STANDARDS  
FOR SALE BY U.S. GEOLOGICAL SURVEY, WASHINGTON, D.C. 20242,  
TENNESSEE DIVISION OF GEOLOGY, NASHVILLE, TENN. 37219,  
U.S. TENNESSEE VALLEY AUTHORITY, CHATTANOOGA, TENN. 37401 OR KNOXVILLE, TENN. 37902.  
A FOLDER DESCRIBING TOPOGRAPHIC MAPS AND SYMBOLS IS AVAILABLE ON REQUEST

USGS  
HISTORICAL FILE  
TOPOGRAPHIC DIVISION



ROAD CLASSIFICATION  
Heavy-duty ..... Poor motor road .....  
Medium-duty ..... Wagon and jeep track .....  
Light-duty ..... Foot trail .....  
Interstate Route ..... U. S. Route ..... State Route .....  
In developed areas, only through roads are classified

U.S.G.S.  
FILE COPY  
TOPOGRAPHIC DIVISION

CHATTANOOGA, TENN.  
N3500-W8515/7.5  
1969  
AMS 3954 III SE-SERIES V841

2830  
NOV 1 1969